

# COCHINS INTERNATIONAL

Editor: Karl Rau

JANUARY 1998



I couldn't resist (kr)... from an Christmas card given to me by Jamie, Terri and Megan Matts....NY!

From the President's Perch.....  
Pat Lacey.....

Hatching season! My favorite time of the year. I am starting a little bit later this year in hopes of having something in great shape for the Ohio National Nov. 13-15. They expect 10,000 birds and the odds of one of mine surfacing are slim and none, but it is still fun to dream and prepare. They are having 24 Nationals so I don't think we will have too much of the spot light. At least they are having it in a building that won't freeze.

I hope to hatch more birds than I was able to last year. So

far I am in good health . I gave my remaining gold laced to an older gentleman west of town. HE was delighted and I have them where I could get breeder stock back if I wanted to. My new project is Brown Reds. Last fall I attempted to get stock of the Craig Carroll line. If any of you have ever seen how he developed them I felt it would be ashamed if they disappeared. So I'll keep you posted on my new project.

Please note the brochure that Brian Justice designed for the club. All of you can have copies made locally and pass them out at the meets in your area. Brian and I have

*(Continued on page 4)*

# COCHINS INTERNATIONAL

The Cochins International Newsletter is published 3 times per year.  
Approximate Printing dates are January 1, May 1 and October 1.  
Send all submissions to the editor at least two weeks before printing date.

Club questions and concerns regarding club policy and all ballots should be sent to the **PRESIDENT**.  
All show placement requests should be sent by the show secretary to the appropriate area **DIRECTOR**.

Material submitted for publication, show report and "master breeder points" questions and concerns should be sent to the **EDITOR & POINTS CHAIRMAN**.

Dues are due January 1st. \$10 single/\$15 family/&\$7.50 Jr < 18.

All inquiries regarding club membership and payment of dues should be sent to the **SECRETARY**

Club Directory questions and information should be sent to the **DIRECTORY CHAIRMAN**.

\* \* \* \* \*

## PRESIDENT

Pat Lacey  
W 5055 US Hwy. 10  
Neillsville, WI 54456  
(715)743-4799

## VICE PRESIDENT

Tim Hooker  
3667 State Line Rd.  
Poplar Grove, IL 61016  
(815)292-3260

## EDITOR & POINTS CHAIRMAN

Karl F. Rau  
RR2 Box 3350  
South China, Maine 04358  
(207)445-2315  
e-mail: krau@pivot.net

## SECRETARY & TREASURER

Dennis Wollard  
1913 Beau Bassin Rd.  
Carencro, LA 70520  
(318)896-5442  
e-mail: dlw461@usl.edu

## DIRECTORY CHAIRMAN

Jeff Ryan  
19 Hyde Rd.  
Gray, Maine 04039

## DIRECTORS

INTERNATIONAL  
Bernice MacLaren  
RR4 Stephens Bay  
Bracebridge, ONT. P1L1X2 Canada  
(705)645-8163

PACIFIC  
Bob Anderson  
2691 SW Elk Rd.  
West Linn, OR 97068  
(503)638-8705

WEST CENTRAL  
Mark Peterson  
RR1 Box 185  
Amboy, MN 56010

NORTH CENTRAL  
Brian Justice  
33841 Hysell Run Rd.  
Pomeroy, OH 45769

## DIRECTORS

NORTHEAST i  
Bob Hawes  
8 Short Wharf Rd.  
Hampden, MAine 04444  
(207)862-4189  
e-mail: rohawes@maine.maine.edu

NORTHEAST ii  
Peter Luca  
219 E. Saddle River Rd.  
Saddle River, NJ 07458

SOUTHEAST  
Otes Ray  
315 Pearson St.  
Blackburg, SC 29702

SOUTHWEST  
Wayne Melancon  
208 Durocher St.  
Thibodaux, LA 70301

# A Winter Message from Northeast District I

by Bob Hawes

We have had some very impressive Cochin classes in the northeast District I this fall. I was able to be at the show in Cobleskill, NY, Deerfield, NH, The Boston Show and the New England Bantam Show. All these had great Cochin classes. At Cobleskill there were some nice rare varieties in bantams represented in barred, red and brown red. The numbers and the winners you will find printed in the points/reports section.

Looking forward to the NE Congress show in Springfield, MA in January. Karl Rau and I hope to enter a few of our columbians. I hear that people in other districts have this variety, some pictures would be nice to see. We also have a new color pattern that we are calling Mealy Grey or probably more correctly Silver Quail. It is the silver equivalent of the Quail Belgian D'Anvers. Talked with a cochin breeder in TN recently who may have the gold version in cochins. We are hoping to meet up at Ohio next year to compare patterns. If you have a rare color pattern then Ohio is a great place to show it off. Maybe the rare colors can give the blacks and whites some real competition.

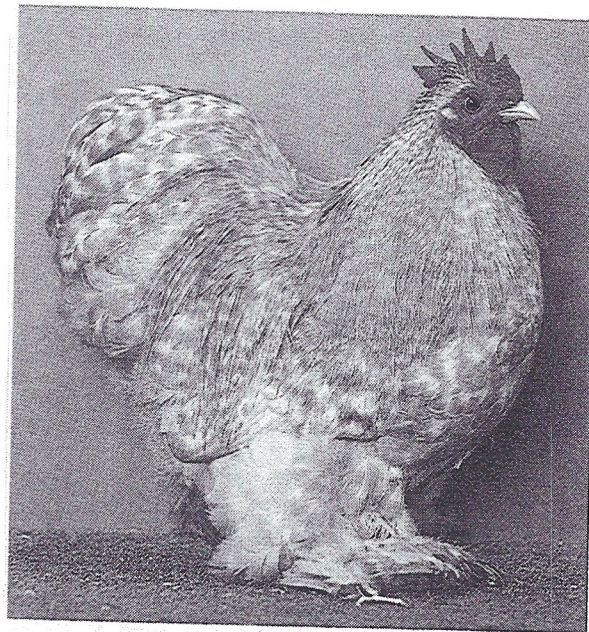
Some members talked with me this fall about expanding the point system to include wins above the breed level. That is extra points if the cochin makes best Asiatic or best Feather leg and additional points if they go on to show Champion. Maybe this is a topic that should be discussed again. When the club was formed there was pretty strong sentiment against this idea but perhaps opinions have changed. Opinions from members might be useful for the officers.

Had a great Christmas card from Jamie Matts with a photo of a buff baby chick and his cute, young

daughter. That's a mark of a dedicated breeder to give your chickens equal billing with your offspring. Also a unique card from Donna Lamb showing one of her whites in a nest of tinsel and decorated with Xmas bows. Maybe we should have a Christmas card contest next year for the best use of Cochins in a holiday setting.?

Elsewhere in this newsletter you will find some excerpts from the American Cochin Bantam Club Yearbook of 1934. This was supplied by member Donna Lamb who is a friend of Dexter Tindley. Dexter was one of the great breeders of Buffs at this time. Nice to see how the color and type has evolved. Hope that you all have an incubator full of winners at this time! Bob

*BANTAM*



1,0 Zwerg-Cochin  
gelb-gesperbert,  
sgZ; M. Schmidt,  
Steinhude.  
Foto: Wolters

Speaking of color genetics.....I found this picture in a German publication..... for those of you who speak German...what color is it...looks like a Buff Mottled! Karl

# U Breeding Buff Cochin Bantams

By Walter Dexter Tindley

In writing this article, I will not try to set before you my methods of breeding as the only way to breed Bantams. I will, however, try to give the benefits of my years of experimenting in the past and you may use whatever part you see fit.

In breeding Buffs, I have gone to a show with two birds of the same type, that is the female short legged, broad and low with plenty of fluff, a little darker than real buff, and the male on the same type, short legged, broad and low and, perhaps a trifle darker than the real golden buff, and the female has been judged the winner, and held up by what I consider one of our best judges as the ideal bird, but the male, being proportioned on the same ratio as the female, invariably ends up a second or third and thrown down because he is short legged and a bit dark which shows that the female can get by being short legged when a male can't, and also a female, which is as dark in relation as the male gets by as good buff color, where a male, because of his brilliance of color, is called too dark.

Now bearing this in mind, I concluded that to have the right type of birds in each sex you must double mate as a male must be good colored to place, but can be long legged and get by, where a female short legged, is not called a creeper. A female, which in the daylight of the backyard looks almost chocolate, can get by as a good colored bird in the showroom.

With this in view, I have mated accordingly and have proven to my self it is the correct way as I have got results and had the pleasure of having my birds in the Blues at the major shows.

In double mating, I have had one pen in which I expect my males and one in which I expect my females. In mating the male pen, I select a male that is perfect colored with as short a wing as possible and with a nice globular cushion, and even though he is a little high legged he must be short bodied, short backed, wide chested, and have a small comb. Then I select a female with perfect even color, light, almost fawn color with a very small wing, a large cushion, and legs back on her body far enough to give her a forward tilt. Such birds do not come made to order for if she has these qualities she does not have to be short legged.

Summing this up you can see I should expect a cockerel with fine color, short well carried wings and width of leg feather though not too close to the ground. This is the type that will place over the class in most shows, whether we think it is the best bird or not.

Then in my female pen, I select a male such as you all have seen. He is a big fellow with a tremendous large cushion, short legs, very long loose leg feather, very wide across the chest and with a large hackle coming down the middle of his back. To get such a fine male he will have to be off on color. He will be dark, perhaps almost red or to be brief, he must have type regardless of color. You will have no difficulty obtaining such a male as they are fairly plentiful and are considered of no value while a good colored male with these qualities would be priceless. To this male, I select two or three females that are as near the following description as possible. The female must be low, even short legged, wide with legs placed far back on the body to give forward tilt, long loose under fluff with wide booting running forward on the legs up into the breast feather rather than back to the hock. She must be full chested and, if possible, wide of cushion. Such a female is generally dark, use her regardless, but the lighter the buff color the better, as long as the color is even with no trace of mottle. When you find a female with the legs placed back on the body giving a forward tilt, she is generally very large chested, sometimes so much so, she looks as though she were carrying a bunch in her chest. This is very desirable as she will throw this to her daughters and eventually it will modify down to a deep chest.

Now on trying to mate such a pen you may have trouble getting birds such as I have described and you cannot expect to the first year. You may have full chested bird that is not wide, or she may be too long, or you may have a female that is nice booted with the desirable width and also abundance of thigh feather breaking up to the chest but she might lack color or chest, but breed such birds and in a year or

---

two you will have birds such as I have mentioned and you can use such to produce winners in most any show if properly mated.

In summing this up, you can see that a male must have color and even color, right size and good wing carriage, the latter can make or break a winning male. This bird can be higher than a female and still place. While a female must have type, be wide, low down and have long loose feather to place, she can be over-sized and a color that is almost chocolate in the backyard and get by in the light of the show room.

Now from this, I don't want you to infer that I think male birds should be placed for their color alone or that we should forget color in placing a female. I like to see a real Cochin as much as the next fellow does. However, I find such birds as mentioned are taking the ribbons in the majority of the shows.

# EDITORIAL..... OF SORTS! Karl Rau

A mini apology is in order for the tardiness of this newsletter. For those who read or watch the news, you are aware that we had a major ice storm here in NE. It looked like a war zone, I was without power for 10 days, i.e. no computer...so in part that is my excuse. I have never in my adult life seen so much devastation ...so much from so little..trees and poles down all over the place. There was almost a 2 inch ice build-up on my truck windshield.Waking up to a 39 degrees house isn't a whole lot of fun...but then when I see some of the flood and earthquake problems from other parts of the country!! I tried to put all of it in perspective. Since it takes about 50 hours to put together a newsletter, (which doesn't include the mailing part)...I hope you will be understanding!

For those of you who think YOU are a little crazy.... we had our Springfield show this past weekend (it's our equivalent of Columbus, etc.).but of coarse when it was time to wash birds, I didn't have power.... so I crated up my show team (27 in 6 colors) and drove to a friend's house, with power, which was 45 minutes away. .. spent the whole day washing and then made a second trip home to get some cages and then set them up in her basement.... back the next day to pick up my "dried" birds. NUTS...yeah I know.... then we almost didn't go to the show because of bad traveling conditions. My Dad and I went, had a great time...did well... and talked with some great friends! Peter where are you?

Speaking of the Springfield show...sorry Bob I had to beat your famous BB Buff pullet! I must confess I have never seen such depth of quality of cochin bantams...of the 59 blacks there must have been 20 that easily could have been chosen for BV. Bill Ziehm told me he had been to Columbus and all over and hadn't seen such depth in 10 + years of showing! The judge, Paul Monteith, was overheard saying to a fellow judge, that the blues, buffs and mottles were "fantastic", the best he had ever seen. So to my cochin friends from the South and West regions...we challenge some of you to show at next years Eastern States in Springfield!! You won't be disappointed with the competition!

If all goes well I will print some pictures of the winners elsewhere in this newsletter.

One of the disappointing things I experience while typing up the show results is the large number of cochin show people who are not members of CI. I recently did two shows where none of the exhibitors were members. I hope that we are all trying to promote our club. This year I printed extra newsletter copies to be handed out at the shows and they were gobbled up very quickly. Something to think about.

Got some great pictures from Darren Shell re: a new color. These are

the kind of articles I love to get! Thanks Darren. I actually think I was the first in this area to raise this pattern in the silver (white) phase. They seem to appear randomly out of my Colombian family. I have never raised a gold version as pictured, but use the silver version regularly in my co family. Bob Hawes and I have discussed this color at great length and still are not 100% sure of the genetics involved. My cleanest co pullet in 96 came out of one such hen. Darren, cross one to co or white or even buff and you probably will get some decent buff columbians. I am anxious to hear your next report! If anyone has any genetic input for Darren, myself or Bob Hawes...we would love to see it in the newsletter! See pictures elsewhere.

A couple of members have written re: points lost when membership has lapsed. There have been times when dues are sent to Dennis and before he sends info to me ...show results are tabulated for a given show. This means some points are lost. First I suggest that all of us try to get our dues paid on time (In January). If there still exists a problem, then write to me, stating exactly which show is involved and what points seems to be lost. It is physically impossible for me to try and figure out which shows were tabulated during this lapse. Your help and understanding in this area is appreciated.

Being a color geneticist of sorts, I am thrilled that there seems to be a definite increase in the number of breeders working with some of the less common colors. I hope my cover letter of the last newsletter helped spur some of you.....Dennis Wollard even had enough confidence in my columbians to acquire some from me!.....To all of you, congratulations on taking up a new color endeavor, and don't get discouraged ...it isn't a short road. If any of you want to spread your work to other breeders...let me know what you are willing to part with and I will try to help connect new color breeders with you via our CI newsletter. Our newsletter is for club communication...what better use would there be?

Wayne..thank you for the nice letter concerning Colombian breeding! I hope to write an article soon about breeding the columbian color.kr Many of you have called me or written with requests for items to put in the newsletter or to correct points, etc.Due to my brain being on overload most of the time...if I have inadvertently forgotten your

*(Continued on page 4)*

Jeff Andrews is seriously looking for some good quality birchen bantams....please let him know if you can help either:

JAndr97965@aol.com or

Jeff Andrews  
12245 Robins Rd.  
Westerville, OH 43082

# REPORT FROM :

## DENNIS WOLLARD

Dear Cochin International Members,  
 It's that time of year again-time to renew your membership. This will be the last newsletter you receive unless you renew. Please check your address label to determine your membership. If the expiration date is not correct, kindly drop me a line soon so I may correct this problem. If you've renewed your membership since January 31 the address label will not reflect the update. Membership has remained fairly consistent (between 170-200) over the past years, however the membership numbers in the Districts have shifted. The following is a break down of the membership in percentages for today followed by June of 1994 membership in (parenthesis). The WestCentral has 5% (3%), SouthWest with 18% (10%), SouthEast at 9% (14%), Pacific at 8% (13%), North Central at 22% (26%) and NorthEast I at 15% with NorthEast II with 11% (combined Northeast 27%). The International membership is at 12% (7%). These memberships help to maintain a respectable balance for the club to function. The current balance as of December 31, 1997 is as follows:

	<u>deposit</u>	<u>checks</u>	
8-30-97	+20.00		
		1,991.62	
9-30-97	no action for month		
		1,991.62	
10-3-97	+137.50		
		2,129.12	
10-20-97	#119	-271.00	newsletter
			1,858.12
10-27-97	#120	-620.00	Imperial Trophy
			1,238.12
10-31-97	+87.50		
		1,325.62	
11-10-97	#121	-55.00	Poultry Press Ad
			1,270.62
11-26-97	+290.00		
		1,560.62	
11-26-97	#122	-68.08	newsletter
			1,492.54
12-31-97	+215.00		
		1,707.54	

# DUES ARE DUE!!

(Continued from page 3)

request please forgive and ask again!!

Note that the enclosed brochure from Brian is designed to be folded into thirds.

I am just about ready to go to the printer and just got back the photos from the Springfield show ....Jeff and I regret that some didn't come out to hot..so I will only include those that look presentable.....At least Don's BB looks great...very photogenic! Last year we took about 5 of each bird...tried to save \$ this year and only took 1 or 2... we learn!

Hope you all have that BB in the incubator!

Karl

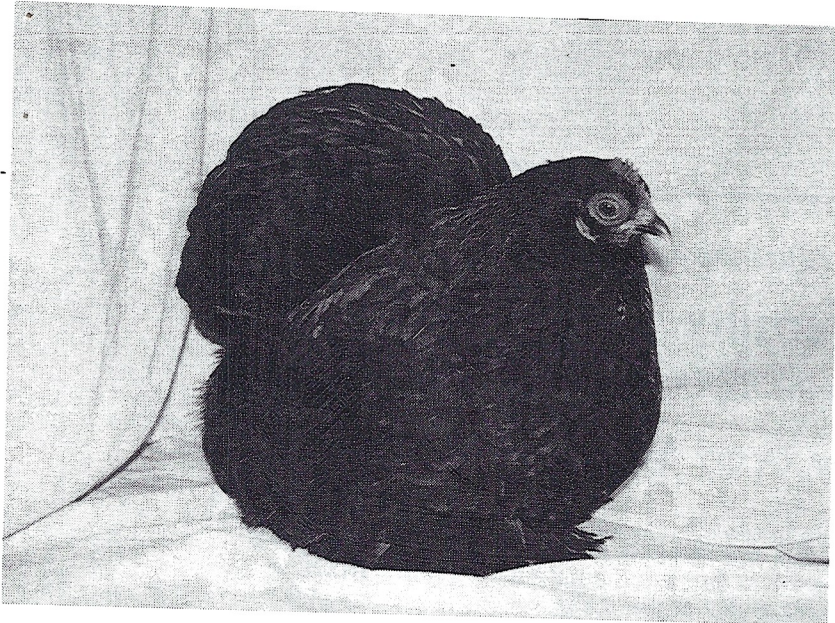
(Continued from page 1)

discussed how to keep our meet at Ohio exciting. We will have a booth and a meeting. Hopefully we can sell memberships to new interested parties. If anyone has a chicken suit let me know. I remember Keith LeGrand talking about in the old days having a contest among exhibitors called a "collection". Your best 4 birds, C,H, k, p against others. We would have to do it ourselves as Ohio would not help us. It would mean colors against the blacks and whites and we would have to find a judge among the exhibitors and we would have to put up the prize. Think about it. We would probably have to do it in our booth. All birds being moved.

Just a note on the NPIP a program. In Wisconsin they are making us become recertified. The price has gone from \$10 to \$20. The renewal date would be July 1 with your notice being sent May 1st. Contact your local agency.

My heart went out to Karl when I saw the electricity was off for weeks out east. I hope that he did not have eggs in the incubator.(nope..kr) That's when you hope you have a cluck out in the barn.

May you all raise a champion! Pat Lacey/President



EASTERN STATES JAN '98  
BEST COCHIN: BLACK H, DON WRIGHT  
RESERVE BLACK C, KEN JOHNSON

### **southwest district.... from wayne melancon**

Well it's a rainy Saturday night this Thanksgiving weekend and I can't help wishing I could have gone to El Dorado. A Previous commitment prevented me from being there, but I'm sure Dennis will call me and tell me how it went. I haven't heard from too many people on how this year 's hatch went. Most of the one's I have spoken to say they

had a late start. I will be seeing many of you in the next couple weeks. self and Dennis Wollard will be going up to Shawnee, OK next weekend and then west to Brenham for the Texas Nationals, the following weekend. By the time this is printed these shows will be past but I am hoping I have the opportunity to talk to as many members as I can. I was able to drive over to Dennis' house a few weeks ago. We live about 2 hours apart so I don't get that way very often. I had a chance to see the paintings that are up for bid and I must tell you they will be a good investment for someone. The head area, esp. the eyes, look so lifelike and color is gorgeous. I must admit I took a special liking to the Brown reds. Be sure and send in your bids as Dennis and I are still discussing which show we will open those bids up at so we will have plenty of witnesses.

While at Dennis's house, I also had an extra delight to see he had acquired some Colombian cochins. To my delight, the males were as good a type as any variety I have seen. If they were judged on breed type alone they could have beaten any black or white on any given day. I had contemplated for several years on getting some but was already tied down to developing my Colombian OE and wasn't sure if I had the room. With what I have learned from them, I am confident that I can help Dennis to fix color birds he has and the south will soon have Colombian cochins that are competition\.

Well I hope everyone has a satisfying show season and if any of you members see me at a show, please stop and introduce yourself. This lil Cajun loves to talk and is never at a loss for words!

Brian Shamblin is looking for silver penciled adult bantams.... he can be reached at:

271 Old Chatanooga Pike  
Cleveland TN 37311

BSbulwer@aol.com or  
423-559-2652

*The Question Of*  
**Hatchability, Fertility And Vitality**

*In Relation To Lineage*

*By Walter Dexter Tindley*

In supplement to my article elsewhere in the Review on how I breed my Buff Cochin Bantams, I might also say that in this breeding of winners, we breeders in our desire to win have got to get on to ourselves and to produce a more rugged strain as well as a winning strain. I have been as guilty as any in the past. We have got to produce a strain of show birds which will lay, supply fertility, and also be good rugged stock that can stand shipping, cold weather, etc. We have come to the place now where the birds have reached their present stage of Perfection and even though it takes us a little longer to reach our objective, we should breed only those birds which have the quality of reproducing a rugged constitution.

It has been the thing in the past that if one had a fine bird, to breed her regardless even if fertility was such that only two or three chicks hatched and if they were weak, and had to be coddled to reach the show room, what mattered as long as they pulled down the blues. Until we can say to our prospective buyers that our birds will lay, give a good percentage of fertility like ordinary poultry, we cannot expect our ranks to expand or to have a great amount of interest stimulated in breeding.

This is the way I have been checking up on my flock. I take my two best pens each year and give each bird a number. In my record book, I put each bird's number, devoting a page to that bird. I record her parents and their characteristics briefly. Then I give a description of the bird numbered, whether short or long legged, her color and if even or not, that is describe her in detail. Then on the other side of the page keep record of her physical characteristics, whether or not she came through the winter strong, if she was susceptible to colds, when she started laying, how many eggs she layed, and how many times she went broody. Then as time goes on, how long she lived and her show record.

Each chicken from this bird is numbered and on reaching maturity it has its number and record and I check back to its parentage and see if it is an improvement and what it inherits, and so on down the line. Then I can look back in my record to find which line is improving and which line has the desired physical ruggedness as well as ability to win. In this way I can look back and form an opinion of what characteristics they inherited as I have a record of each and every bird and what qualities it inherits from its parents as well as which type of mating gave the best results. This may seem like a lot of work but is not as hard as it sounds if all the eggs from each female are kept separate and set together. Then all her chicks grow-up together and can be treated all by one number, each bird being a brother or sister and bearing the same number.

If this method is followed, you will be fully repaid for your work by the satisfaction of being able to trace the lineage and to find the results obtained, or to quote some fancier, "The winning breeder in the future is going to be the best bookkeeper."



*Please "Bear In Mind"*

*That The A. C. B. C. Annual Dues Are One Dollar*





# A Strange Cochin Color

by: Darren Shell  
9990 Willow Grove Hwy.  
Allons, TN 38541  
tel.: 931-823-6616

I thought I might write a little about a color of cochin bantam I've been raising for a number of years in hopes of finding someone else that may have seen similar results in their breeding.

I was pleased to see a picture in the "press" of a cochin female belonging to Mr Bob Hawes of Maine that had the same pattern as one of mine. The color was different, but the pattern was dead on. I have talked with him a time or two and found him to be of help and interesting to talk with... having considerably more experience under his belt than myself.

The birds are of the black-tailed red variety, but not the variety that most of us think of when they hear the term. They very much resemble the OE variety of Ginger Red. The males are of New Hampshire in color and the females are strongly penciled much like a BB Red OE female. Strange as this may sound, they have reproduced youngsters identical to themselves for 5 years. Unfortunately, their type was not near what I had hoped for. So, I have been breeding them to black for the past few years. This is where it got interesting.

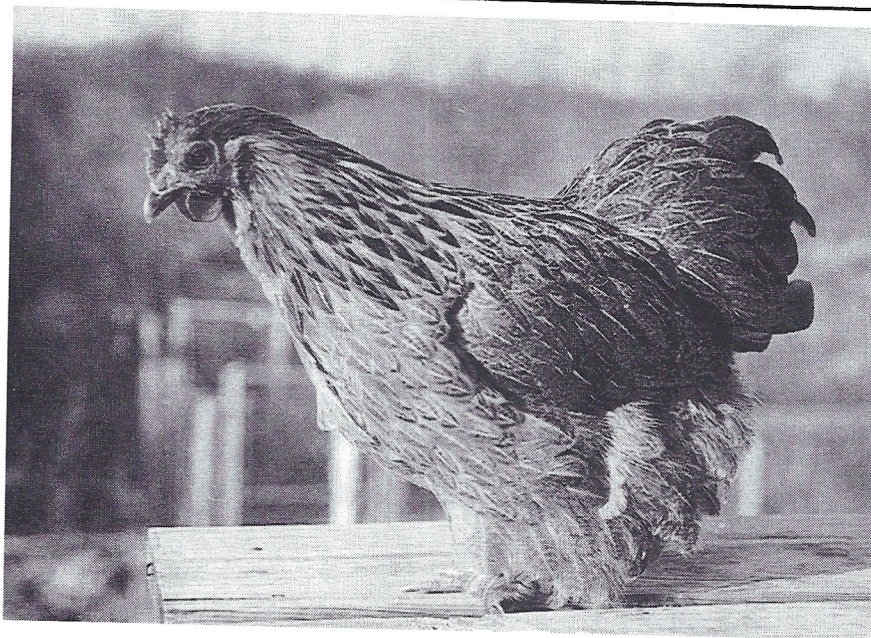
The first and second breeding produced brown reds of good color and fairly good type and some ginger reds of the normal type and color. The third generation produced better type in both varieties and one quail female with very good color and pretty nice type. This quail pattern is what Mr Hawes had produced in the silver color! As I understand, she was a result of his Colombian crosses, which have a lacing pattern similar in some ways to that of silver quail.

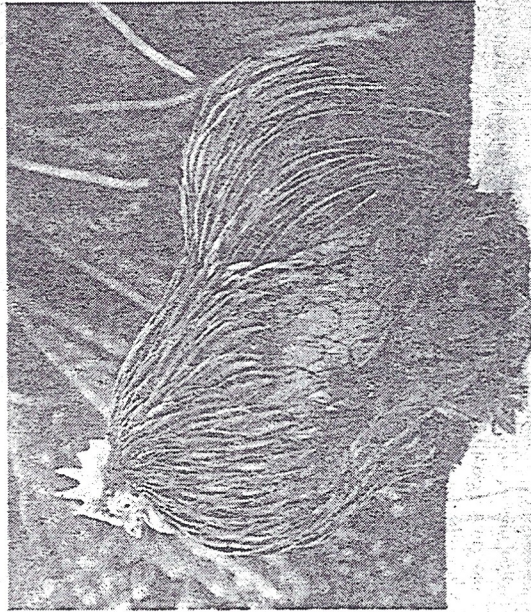
So, without further confusion, I'm breeding her to black now and to brown red later if she cooperates. I would like to improve on her type by widening the cushion on her off springs, but all in all, she has a lot of good qualities that even my blacks could benefit from.

If any of you have any suggestions ... I would enjoy hearing from you ..... Darren

(I have raised a number of these birds in what I always considered "off" colored columbians...all in the silver phase.... I'm not convinced that they just aren't columbians that are too dark...as all that I raise are females...never raised a male that wasn't columbian colored.....I use them frequently in my columbian program to add color strength to the males....as I mentioned elsewhere in this newsletter...in 1997 my cleanest and best columbian pullet came out of one such female..... Karl)

Pullet from Darren Shell in the gold phase





Left: The Black Cochin will be on show this weekend. Centre: Angelena Middleton and her White Crested Black Polish. Right: The White Wyandotte is in the Bantam class.

# Poultry fanciers – a breed apart

**A**re poultry fanciers born or are they hatched? Angelena Middleton has been showing chickens for over 50-years. She was influenced into it by a trio (male and two females) of White Cochin Bantams (feather-legged birds). "That has been the love of my life, because they were given to my dad for me," Ms. Middleton said. Her father had carried them home on the Bermuda Railway.

Angelena was all of three and just barely out of the shell herself. In those days before the war, poultry shows were held at No. 6 Shed. Ms. Middleton credits W/R. Evans, a one-time Director of Agriculture, with being the driving force in the development of poultry in Bermuda. "I always remember him pushing me."

She keeps Black Cochins currently, but is awaiting the arrival of white and buff-colored ones.

According to Bermuda Poultry Fanciers' Society President Ronnie Lopes, Ms. Middleton has been very supportive, not only of the young people she encourages, but also of him. "She has all these different breeds of chickens just so

that people can see them," he said. "And if someone is interested, than she can get them going."

This weekend's show is open to six classes of bantams which include a large number of varieties and colours. They've all at one time had to be imported. "There's a lot of red tape to bring chickens into the island, for which I'm happy for," Ms. Middleton said. "Otherwise, with a little island like this, we'd import diseases and we'd be wiped out." She says she might spend a year in the effort. When the full-grown chickens arrive, she can see how

## Junior training cont'd.

ment. It includes knowing how to hold the poultry, checking its health, preparing it for shows, making it stand properly or having it walk up and down a counter, knowing the parts of the body and other terminology.

Said Ms. Middleton: "The whole idea is to teach them how to take care of (the birds) and how to show them."

Caring is a broad state-

they've developed. She said she always gets the best she can buy.

She noted that several judges have been exceptionally helpful to Bermudian breeders. They've pointed out the good and bad aspects of stock already here and have willingly sought and shipped new birds to local buyers.

"That's the way to get good birds," Ms. Middleton said, "...not through a newspaper or magazine. That's the worst way."

Yes, she takes her breeding seriously. And her stewarding. For she will, along with Lisa Spurling, assist

Judge Larry Mac Hovis to record the wins for forwarding to the American Bantam Association.

She explained that stewarding the same event in which you are showing is the result of living on a small island. "We are duty-bound," she said, "to never let on to the judge whose birds they are...absolutely no way, shape or form."

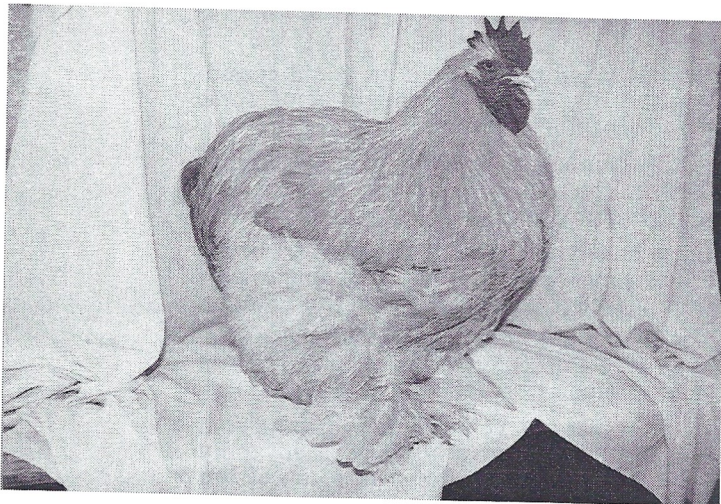
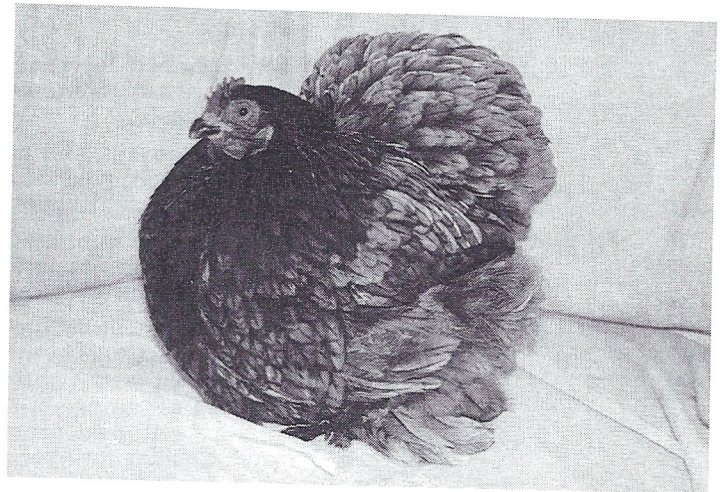
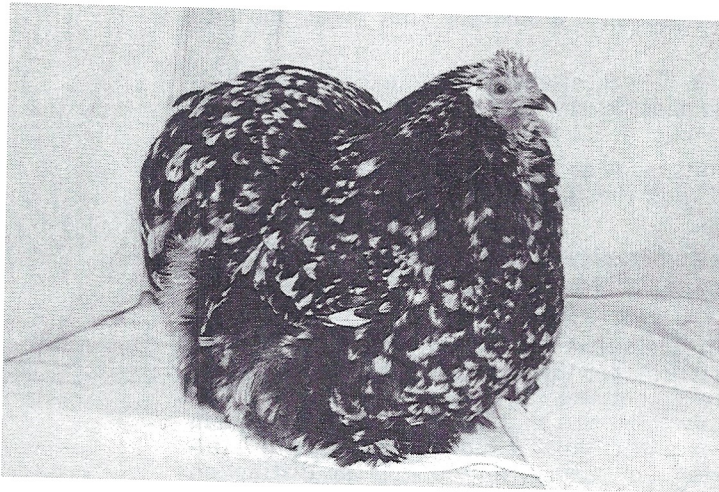
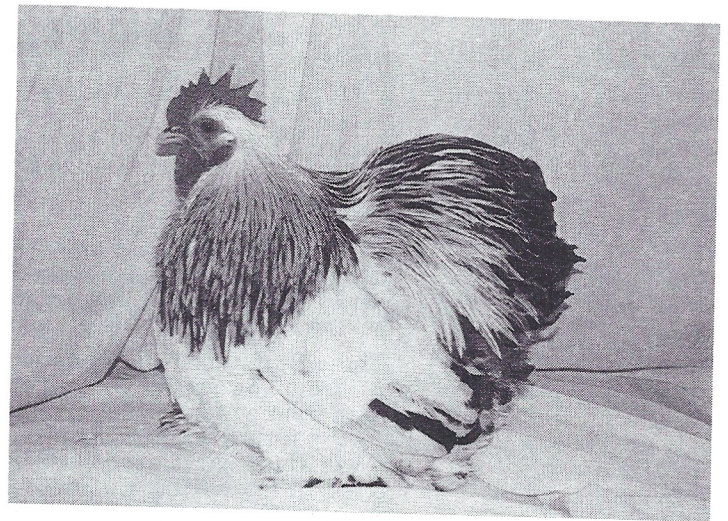
Ms. Middleton is also donating ribbons she won in past Agricultural Exhibitions. "I'm re-designing them and giving them to the group," she said. "We're (the bantam fanciers) not a club as yet."

So whether they're born or hatched, or just experimenting with this first Bantam Jamboree 1997, poultry fanciers are a breed apart.

*We're proud to support*

*the*  
**Bermuda Poultry Fanciers**

# EASTERN STATES JAN. '98



PHOTOS (L TO R): BV Buff(B) Karl Rau, RV Columbian (B) Karl Rau, RV Mottled (B) Norman Rau, RV Blue(B) Norman Rau, BV Buff (S) Bill West., Two Uglies (Jeff Ryan & Karl Rau)  
Apologies to the following members as the photos of their winners did not look very complimentary, I'll try harder next year! Donna Lamb (RV Buff), Karl Rau (BV Blue, RV Splash), Norman Rau (BV Splash), Laura Adams (BV BR), Bill Ziehm (RV BR)

# Training Breeders Of 1984

*To Breed Buff Color*

*By Mort Cooper*

It is a pretty sure thing that in the year 1984 the writer will be taking his long sleep and I would hate to feel that I had been laid away without giving up certain discoveries and experiences with breeding Buff color, particularly on the Buff Cochin Fowl that could not be used and improved upon by others now or in the future.

Those Buff Cochin breeders who will be National and International leaders 50 years from now are the boys in their early teens. Many of them unconsciously are now in training for the important places they are to fill in our show rooms as well as in the future business of the world. As you go through life the writer is sure that you will find that a good business man with a good hobby is generally a complete success. A man without a hobby or a man without a business is generally always in some kind of difficulties. There is no better hobby in the world than breeding fancy poultry and this kind of hobby often develops into a business that gives one both pleasure and profit.

You younger members of the A. C. B. C. are already assuming responsibility, learning self reliance and tolerance and in most every case you are living up to the highest American ideals.

Your interest in Bantams and the exhibits made at New York and other shows last year has made me overjoyed because I know the future of the Buff color on Buff Cochin Bantams is in mighty good hands.

The American Cochin Bantam Club is an organization anyone should be proud to be a paid up member of. It encourages the qualities you look for in Bantam stock and the calibre of men in back of it makes you respect your superiors.

There is and always will be Bantam breeders that hope to trot out displays that each specimen is a masterpiece, and it is true that they try hard enough each year but for some unknown reason quite a few do not seem to be able to grasp certain secrets or do not take advantage of the many good tips that are passed along to them by their fellow Bantam breeders and our excellent Bantam Judges. Having successfully bred Big Buff Cochins for over a quarter of a century, and having the distinction of winning First Prize Buff Cochin Cock at New York on different males for 5 successive years which is a record never before achieved by any other breeder of this variety in the history of the world.

Your splendid Secretary Mr. Perry Parker has asked the writer if he would consider to give up some of his secrets in breeding the Big fellows that might be of some value to many of you younger breeders of Buff Cochin Bantams.

You are generally told right off the bat Buff color is a very hard thing to accomplish. Well fellows the next time anyone tells you that you just say. It is a problem that requires skill and you find it a most fascinating study.

I am sure that many breeders, that perhaps have tried and failed, will also find a new attempt most interesting if they will follow some of the secrets I am going to pass along, which I am sure have never before been placed in print, at least in this manner.

Some breeders and ones that are very determined indeed, breed Buff Fowl a lifetime. And while they trot out now and then an even Buff colored winner from certain nicks, never get the real foundation laid to a systematic breeding schedule.

To become a good breeder of Buff Fowls, you must put your whole heart and soul into the breed you choose, and if you will dig deep into your study and then apply common horse sense to each mating and schedule of matings, nine times out of ten you will get pleasing and satisfactory results.

Please absorb the following very closely. This also may not hurt some of you older Buff Breeders either— If you were to paint a house Buff in color and the only paints you had to work with, were light mahogany, deed orange, lemon or white— What would you do? Well you certainly would have to put that old noodle to work and begin to mix colors, then blend and blend until you arrived at the correct Buff

shade, wouldn't you? If surface you wished to paint the Buff color on did not have a good foundation for your Buff, you would probably build up a good under-color first, wouldn't you?

Now then boys and girls and some of you grown ups too, lets go out and look the color in the pigment of the feathers on your Buff Cochin Bantams. I wonder just how they are mated up in this respect? I think I can see some pretty dark red males and females together, also some that perhaps that have black in their tails and some pepper in their wings, also some faded out Buff specimens with lots of white in tails and wings, with white in back hackles of males.

Now let's study each specimen very carefully as we are going to need the best solid colored specimens of their many different shades. Lets stop and think, wonder what would happen now if we mixed these feathers in pigment on these living beauties just as we would the colors in the paints?

You are right; real Golden Buff in males and delicate Buff in females would begin to show up in your next season chicks. For the very best results start a Golden Buff male line and a delicate Buff female line and make a study of each color pattern before you mate your little fellows and if you toe punch or systematically mark your chicks from each years matings and religously follow a schedule you will produce blood lines that will bring you 10 good ones where haphazard matings will only now and then bring out a promising one or two.

Space will not permit the writer to go into great detail as much as I would like to, therefore lets assume you have them down to the right size, good type, length and width of feather, cushion and everything that goes to make up just what you have in mind in a Buff Cochin Bantam. Still using the present Standard of Perfection as a model and if this color scheme fits in with your next and successive matings and you win some extra blue ribbons, I shall be very happy.

The writer hopes you younger breeders will also develop into business men and women, that regardless of what happens or wherever you go that you will always stick to this fascinating hobby or side line. We are really thankful that we have got beyond this secret breeding stage and to the point where we like to see the other fellow breed some good ones too and trust that you will always remember a good fancier always wants to see the best bird win every single time. Why not come to Lansdale Pa. and pay me a visit while we are both alive?

## History Of Cochin Bantams

By J. F. Entwisle

Fifty years amongst Pekins. Truly a long period, and an association with the breed that few, if any, living fanciers could claim.

In my boyhood days there were Buff Pekins, it is true, such as they were, with not a particle of buff about them. In those days the color now known as Red was unthought of in poultry. Today those Buff Pekins of 1880 would be considered nothing more nor less than Red Croad Langshans, so far removed were they in type and color, from those of later origin. Some blacks were in existance. entirely in the hands of those exhibitors, A. E. and George Ward of Sale. The Buffs were certainly a cross from the Nankin bantams. The blacks are far superior (even good) in size and type; but what color the males were, brown, white and black. Some of you know the result, in this day, of a direct cross between a Black and a Buff. That best gives you an idea of the black males fifty years ago. The females were better, but few were without red neck hackles.

My late Father decided to breed from the large Cochin, and to this end he secured one small female of each of the four colors then known, but no bantam would cross with them. There were few breeds of bantams in those days, and a gray male, half bred between an ordinary Aseel cock and a Black Red Modern Game Bantam was mated to these small Cochins. From this mating the originators of our present Pekin

Bantams sprung. Black, White, Buff, Partridge had all the same common ancestors, Aseel and modern Game Bantams. An importation from America of would be Buffs in the Eighties helped to improve shape, but brought with it five toes that took generations to breed out. Later an introduction of Booted Bantams into the whites improved color and footings, but also introduced long hard tailed, with which the birds could not win. These resulted in tail removing, which caused much trouble and controversy until recent years.

In the nineties. Partridges were so near perfection that they could beat any other color, and we had one Partridge Hen which won over ninety times in four years, beating all colors under most judges. Later almost our entire stud of Partridge females were worried by a dog. What remained (three out of forty) were of so little value that I cleared them out, and the late Rowland Butterworth crossed them with his Dark Brahmas; but even his best left much to be desired. The Cock strain of Partridge bred themselves entirely out, and then I begun to originate the various colors of Wyandotte Bantams. The Pekins were gradually superceded by them, until recent years I have bred but few.

One of the first typical Buff Cocks my Father bred down was sent to America for the breeding season. He was the first Bantam breed buff throughout, one even shade all over. This bird recrossed the Atlantic in time to again win at the Palace, after leaving a big crop of progeny in the States.

My last importation of Buffs from America was in more recent years, when we began to find them almost impossible to rear. These were divided between James Whitley, the late George Proctor and Messrs. Lee Brothers. The result was most successful as far as males were concerned, but less so in the female line.

The first pair of Cuckoo Pekins were imported from China. The Hen died, but the Cock came into the possession of the late Matthew Leno who sent him on to my father, who was at that time originating Barred Rock Bantams. This Cock, mated to one Black and one Grayish-white Pekin and one Barred Rock Bantam, eventually produced Cuckoo Pekins, which in the early nineties were the most popular of all Pekins. Several realizing prices from twenty Pounds to thirty Pounds each.

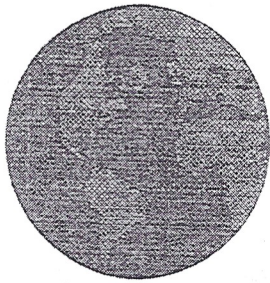
Blue Pekins were originated in 1910 or 1911 by a Mr. Wimperus, who at that time produced many varieties of Blue Bantams. They had a set back during the War years, and have only lately come again since Mr Whitley took them up. Spangles there have been at times in both Blacks and Buff, some too gay, but some exceedingly pretty; and of course we have seen from time to time excellent specimens in Birchen, Brown-reds and Pyles. There is no objection to any one re-creating these off colours; but after all I think there is more scope in maintaining those colours that have their counterpart in the large Cochin then in further increasing the variety of Bantams, many of which are crowded into the A. O. V. classes at Shows.

The Pekin Bantam of today is worthy to wear it's correct designation, the Cochin Bantam. They are truly Cochins, and have been brought almost to perfection. Perhaps few can appreciate this fact more than one who has been familiar with them almost from their inception, and has seen their continuous progress half a century.

(Editors Note: Tradition has it that the first Cochin or Pekin Bantam to be introduced into England came, with other loot, from the Summer Palace at Pekin, which was stormed and sacked by an Anglo-French Expedition in 1859-60. Forty years later your editor was with the American Naval Forces during the Boxer troubles and was stationed four months in the Summer Palace however there were no fowl of any kinds there at that time, just a few ducks out in the lake.

Also believe this is the last letter written to American correspondent by Mr. Entwistle who died shortly after mailing this letter to your Editor.)





# MASTER POINTS

## COLUMBIAN(B)

Rau, Karl F. South China, ME 16

## SPLASH(B)

Isler, T. & S. Otisco, IN 5  
Rau, Karl F. South China, ME 4  
Rau, Norman F. Boothbay, ME 4  
Earnst, W. (B&B) Bridgeport, IL 1

## SIL.LAC.(B)

Vines, Luther Florence, AL 9  
Krause Family LaPorte, IN 3  
Ray, Otes Sr. Blacksburg, SC 2  
Justice, Brian Pomeroy, OH 2

## RED(B)

Colegrave, Diane St. Ignace, MI 10  
LaGrange, Jim Leonville, LA 2

## GOLD.LAC.(B)

Lacey, Pat Neilsville, WI 8  
Wollard, Dennis Carencro, LA 2  
Hoyt, Mary E. Atascadero, CA 1

## PART.(B)

Maas, Hans Baltimore, ONT 2

## BR.RED(B)

Laastch, David Beaver Dam, WI 14  
Kulak, Mark Sorrento, BC 12  
Wightman's Bantam Norwich, NY 9  
Anderson, Charles New Hartford, CT 8  
Adams-Durgin, Laur. Hobart, NY 7  
Rau, Karl F. South China, ME 4  
Ziehm, William Newfane, NY 3

## BLUE(B)

Isler, T. & S. Otisco, IN 96  
Rau, Norman F. Boothbay, ME 79  
Waldau, D. & T. Constantia, NY 44  
Anderson, Charles New Hartford, CT 42  
Rau, Karl F. South China, ME 37  
McCammon, Matt Sullivan, IN 37  
Shell, D. & B. Allons, TN 21  
Maas, Hans Baltimore, ONT 20  
Vines, Luther Florence, AL 19  
Ray, Otes Sr. Blacksburg, SC 10  
Hickey, Raymond Emsdale, ONT 9  
Mazur, Joe Enderby, BC 7  
Hawes, Robert Hampden, ME 4  
Krause Family LaPorte, IN 3  
Smith, Kim Shipshewana, IN 3  
Armstrong, A.M. Carrolton, MO 2  
Knox, R&L New Paris, OH 1  
Anderson, Bob W. Linn, OR 1

## BUFF(B)

Hawes, Robert Hampden, ME 170  
Peterson, L.&M. Amboy, MN 54  
Thompson, Ed Barrie, ONT 37  
Armstrong, A.M. Carrolton, MO 35  
Holt, Donald Atlanta, TX 31  
Lukan, Michael Hawley, PA 24  
Lamb, Donna Groveland, MA 23  
Rau, Norman F. Boothbay, ME 21  
Becker, Michael Dashwood, ONT 18  
Laastch, David Beaver Dam, WI 13  
Roebuck, Tom & Kai Wallkill, NY 11  
Minnich, E. & J. New Tripoli, PA 10  
Rau, Karl F. South China, ME 8  
Meyer, Carl Mountainburg, AR 8  
Wright, Donald Red Lion, PA 7  
Hickey, Raymond Emsdale, ONT 7  
Shell, D. & B. Allons, TN 6  
Krause Family LaPorte, IN 6  
Justice, Brian Pomeroy, OH 6  
Ziehm, William Newfane, NY 5  
Wollard, Dennis Carencro, LA 5  
Helvey, Bryant Angels Camp, CA 5  
Abbitt, Fred Spencer, IN 5  
Adams, Scott Litchfield, NE 4  
Vines, Luther Florence, AL 3  
Matts, Jamie Harpursville, NY 3  
Smith, Kim Shipshewana, IN 2  
Murray, Kimberly Lake, MI 1  
Musser, William Waynesboro, PA 1  
Ryan, Jeffrey Gray, ME 1  
Sandhu, D&R Harpursville, NY 1  
Wightman's Bantam Norwich, NY 1

## MOTTLED(B)

Dionne, Dale Granville, IL 135  
McCammon, Matt Sullivan, IN 41  
Rau, Karl F. South China, ME 32  
Rau, Norman F. Boothbay, ME 25  
Dyer, Leslie Cottontown, TN 13  
Marsinko, Andrew Blue Ridge, VA 9  
Ray, Erika Santa Maria, CA 8  
Anderson, Charles New Hartford, CT 7  
Matts, Jamie Harpursville, NY 6  
Mazur, Joe Enderby, BC 3  
Clark, J&S Walkerton, IN 3  
Barnhouse, N. & W. Zillah, WA 2  
Roberts, Tim New Lebanon, IN 2  
Robinson, Doris Bradenton, FL 2  
Waldau, D. & T. Constantia, NY 1  
Sandhu, D&R Harpursville, NY 1  
Earnst, W. (B&B) Bridgeport, IL 1  
Campbell, A&T Murfreesboro, TN 1  
Thyseen, John Webster, FL 1

## BARRED(B)

Knox, R&L New Paris, OH 4  
Wightman's Bantam Norwich, NY 3  
Ray, Otes Sr. Blacksburg, SC 2  
Waldau, D. & T. Constantia, NY 2  
Fox, Kelly Prospect, KY 2  
Krause Family LaPorte, IN 1  
Isler, T. & S. Otisco, IN 1

## FRIZ(B)

Marsinko, Andrew Blue Ridge, VA 9  
Campbell, A&T Murfreesboro, TN 4  
Laastch, David Beaver Dam, WI 2  
Edwards, Billy Crosbyton, TX 2  
Bucella, Paul Huntington, AR 1  
Mazur, Joe Enderby, BC 1

## BR.RED(S)

Wiltshire, Tom Mt. Carrol, IL 3

## SIL.LAC.(S)

Rice, T&P Thurmont, MD 2

## WHITE(S)

Mac Harp Farm Bracebridge, ONT 82  
Carothers, Robert Earville, IL 6  
Thyseen, John Webster, FL 5  
Hickey, Raymond Emsdale, ONT 4  
Smith, Kim Shipshewana, IN 2  
Rice, T&P Thurmont, MD 2

## WHITE(B)

Lacey, Pat	Neillsville, WI	688
Currens, Jimmie	Harrodsburg, KY	328
Armstrong, A.M.	Carrollton, MO	169
Luca, Peter	Saddle River, NJ	167
Hickey, Raymond	Emsdale, ONT	161
Hooker, Tim	Poplar Grove, IL	150
Vines, Luther	Florence, AL	146
Waldau, D. & T.	Constantia, NY	144
Bucella, Paul	Huntington, AR	141
Wright, Donald	Red Lion, PA	119
Edwards, Billy	Crosbyton, TX	79
Gem State Cochins	See: Henderson, J.	68
Ray, Otes Sr.	Blacksburg, SC	66
Mac Harp Farm	Bracebridge, ONT	48
Rau, Norman F.	Boothbay, ME	47
Carothers, Robert	Earville, IL	47
Rau, Karl F.	South China, ME	45
Becker, Michael	Dashwood, ONT	44
McCarthy, Mike	Englishtown, NJ	44
Roberts, Tim	New Lebanon, IN	39
Matts, Jamie	Harpersville, NY	33
Shell, D. & B.	Allons, TN	30
Best, Ed & Marj	Portland, OR	29
Truedson, Doddie	Silverton, OR	27
Zimdars, L. & G.	Sullivan, WI	26
Anderson, Charles	New Hartford, CT	25
Knox, R&L	New Paris, OH	19
Bresslers, Bill	Guymon, OK	18
Rutherford, D. & S.	Shelton, WA	18
Laastch, David	Beaver Dam, WI	17
Vick, Betty	Arcadia, TX	16
Dyer, Leslie	Cottontown, TN	15
McCluskey, L&E	Louisville, KY	11
Thompson, Ed	Barrie, ONT	11
Justice, Brian	Pomeroy, OH	10
Ziehm, William	Newfane, NY	7
Stowers, Chris	Westfield, IA	6
Adams-Durgin, Laur.	Hobart, NY	5
Estlack, R&A	Clarendon, TX	4
Krause Family	LaPorte, IN	4
Sisson, Richard	Charlotte, NC	3
Musser, William	Waynesboro, PA	3
Mazur, Joe	Enderby, BC	2
Miller, Bernita	Versailles, MO	2
Walter, Gordon	Vestal, NY	2
Hoff, Donald	Atlanta, TX	1

## BLUE(S)

Marsinko, Andrew	Blue Ridge, VA	17
St. Amour, Kay	Darlington, MD	15
Wiltshire, Tom	Mt. Carrol, IL	5
Anderson, Bob	W. Linn, OR	4
Walter, Gordon	Vestal, NY	4
Smith, Kim	Shipshewana, IN	2
Rice, T&P	Thurmont, MD	2
Rutherford, D. & S.	Shelton, WA	2
Minnich, E. & J.	New Tripoli, PA	2
Kelley, Mark	Mangum, OK	2

## BLACK(B)

Hooker, Tim	Poplar Grove, IL	571
Vines, Luther	Florence, AL	422
Anderson, Charles	New Hartford, CT	299
Peterson, L.&M.	Amboy, MN	256
Ray, Otes Sr.	Blacksburg, SC	232
Wright, Donald	Red Lion, PA	227
Armstrong, A.M.	Carrollton, MO	158
Schroeder, George	Prompton, PA	155
Bucella, Paul	Huntington, AR	124
Hickey, Raymond	Emsdale, ONT	123
Rau, Karl F.	South China, ME	118
Mazur, Joe	Enderby, BC	100
Estlack, R&A	Clarendon, TX	96
Barnhouse, N. & W	Zillah, WA	96
Becker, Michael	Dashwood, ONT	95
Hoff, Donald	Atlanta, TX	95
Mac Harp Farm	Bracebridge, ONT	93
Gem State Cochins	See: Henderson, J.	92
Lacey, Pat	Neillsville, WI	82
Griner, Martha Ann	Bordentown, NJ	80
Rau, Norman F.	Boothbay, ME	79
Ziehm, William	Newfane, NY	73
Matts, Jamie	Harpersville, NY	69
Currens, Jimmie	Harrodsburg, KY	59
Shell, D. & B.	Allons, TN	59
DiNatale, John	Central Islip, NY	55
Roebuck, Tom & Kai	Wallkill, NY	46
Waldau, D. & T.	Constantia, NY	40
Luca, Peter	Saddle River, NJ	39
Dionne, Dale	Granville, IL	34
Wollard, Dennis	Carencro, LA	31
Bresslers, Bill	Guymon, OK	29
Knox, R&L	New Paris, OH	27
Zimdars, L. & G.	Sullivan, WI	24
Rutherford, D. & S.	Shelton, WA	24
Hall, Lindsay	Stonewall, OK	23
Murray, Kimberly	Lake, MI	23
Melancon, W. & J.	Thibodaux, LA	20
Adams, Scott	Litchfield, NE	19
Hemleben, Thomas	Columbus, OH	19
Miller, Bernita	Versailles, MO	18
St. Amour, Kay	Darlington, MD	18
Smith, Kim	Shipshewana, IN	15
Heivey, Bryant	Angels Camp, CA	14
Edwards, Billy	Crosbyton, TX	13
Truedson, Doddie	Silverton, OR	13
Krause Family	LaPorte, IN	12
Johnson, Ken	Bethany, CT	11
Carothers, Robert	Earville, IL	10
Roberts, Tim	New Lebanon, IN	10
Sisson, Richard	Charlotte, NC	10
Earnst, W. (B&B)	Bridgeport, IL	10
Meyer, Carl	Mountainburg, AR	8
Ray, Erika	Santa Maria < CA	8
Musser, William	Waynesboro, PA	6
Clark, J&S	Walkerton, IN	5
McCammon, Matt	Sullivan, IN	5
Sorenson, K&A	Meominee, MI	5
Dyer, Leslie	Cottontown, TN	4
Whitney, O.Fayne	Athol, MA	4
Walter, Gordon	Vestal, NY	3
Ryan, Jeffrey	Gray, ME	3
Stockman, Paul	Lisbon, OH	2
Minnich, E. & J.	New Tripoli, PA	1

## BLACK(S)

Watford, Ray	Richmond, ONT	116
Anderson, Bob	W. Linn, OR	65
Mac Harp Farm	Bracebridge, ONT	58
St. Amour, Kay	Darlington, MD	53
West, William	Hadley, MA	50
Carothers, Robert	Earville, IL	49
Wollard, Dennis	Carencro, LA	24
Gem State Cochins	See: Henderson, J.	20
Rutherford, D. & S.	Shelton, WA	18
Clark, J&S	Walkerton, IN	16
Walter, Gordon	Vestal, NY	15
Mickey, Frank Jr.	Elba, NY	14
Conlan, Jim	Berryville, VA	11
Sorenson, K&A	Meominee, MI	9
Bucella, Paul	Huntington, AR	7
Hickey, Raymond	Emsdale, ONT	6
Marsinko, Andrew	Blue Ridge, VA	4
Minnich, E. & J.	New Tripoli, PA	3
DiNatale, John	Central Islip, NY	3
Kelley, Mark	Mangum, OK	3
Ryan, C. William	Mayfield, NY	3
Stockman, Paul	Lisbon, OH	2
Andrews, Katie	Kanona, NY	2
Adams, Scott	Litchfield, NE	1
Aten, D&P	Tehachapi, CA	1
Iurato, Jeff	Hackensack, NJ	1

## BUFF(S)

Justice, Brian	Pomeroy, OH	137
Mac Harp Farm	Bracebridge, ONT	131
Peterson, L.&M.	Amboy, MN	110
West, William	Hadley, MA	93
Marsinko, Andrew	Blue Ridge, VA	63
Armstrong, A.M.	Carrollton, MO	58
Lukan, Michael	Hawley, PA	37
Anderson, Bob	W. Linn, OR	30
Schaal, Brian	Burlington, WI	30
Wollard, Dennis	Carencro, LA	19
Bucella, Paul	Huntington, AR	12
Vines, Luther	Florence, AL	6
Adams, Beth	Hobart, NY	4
Carothers, Robert	Earville, IL	3
Clark, J&S	Walkerton, IN	3
Weidel, Pamela	Pennington, NJ	3
Whitsey, John	Webster, FL	2
Walter, Gordon	Vestal, NY	2
Meyer, Carl	Mountainburg, AR	2
Maas, Hans	Baltimore, ONT	1
Laastch, David	Beaver Dam, WI	1
Shell, D. & B.	Allons, TN	1
Esbenshade, Cheryl	Lancaster, PA	1

## PART.(S)

Mac Harp Farm	Bracebridge, ONT	21
St. Amour, Kay	Darlington, MD	6
Andrews, Katie	Kanona, NY	3
Iurato, Jeff	Hackensack, NJ	2

## SPLASH(S)

St. Amour, Kay	Darlington, MD	6
Marsinko, Andrew	Blue Ridge, VA	5



**BOSTON EXPOSITION; Topsfield, MA**  
Regional

Oct. 25/26, 1997

Total Cochins:87  
Total Bantams:79  
Total Standards:8

Judge(s):Kane

Overall CH.: Black p, Karl Rau  
BB Bantam: Black p, Karl Rau  
RB Bantam: Blue k, Norman Rau

Black: BV:(21) p Karl Rau  
RV: k Norman Rau  
White: BV:(3) p Claude McAllister  
RV: k Claude McAllister  
Blue: BV:(8) k Norman Rau  
RV: p Norman Rau  
Mottled: BV:(13) p Norman Rau  
RV: p Karl Rau  
Buff: BV:(21) k Bob Hawes  
RV: p Donna Lamb  
Sil. Lac.: BV:(2) k Claude McAllister  
RV: p Claude McAllister  
Brown Red: BV:(5) H Laura Adams  
RV: H Laura Adams  
Splash: BV:(6) p Norman Rau  
RV: p Karl Rau

BB Standard: Black p, William Ryan  
RB Standard: Black p, Jeff Iurato

Black: BV:(4) p Bill Ryan  
RV: p Jeff Iurato  
Buff: BV:(4) H Beth Adams  
RV: H Beth Adams

**NEW ENGLAND BANTAM; Middleboro, MA**  
Regional

Nov. 20, 1997

Total Bantams:67

Judge(s):Nelson

BB Bantam: White k, Bill Serrine  
RB Bantam: Mottled k, Karl Rau

Black: BV:(18) H R. Generazzo  
RV: k Karl Rau  
White: BV:(5) k Ed Serrine  
RV: p Ed Serrine  
Blue: BV:(6) p Karl Rau  
RV: p Norman Rau  
Mottled: BV:(8) k Karl Rau  
RV: p Karl Rau  
Buff: BV:(24) k Bob Hawes  
RV: p Bob Hawes  
Birchen: BV:(1) k Huesman  
Splash: BV:(5) p Karl Rau  
RV: k Norman Rau

**EASTERN STATES; Springfield, MA**  
Regional

Jan. 16/16, 1998

Total Cochins:147  
Total Bantams:138  
Total Standards:9

Judge(s):Monteith

Overall CH.: Black H, Don Wright  
BB Bantam: Black H, Don Wright  
RB Bantam: Mottled H, Jeff Schwabrow

Black: BV:(59) H Don Wright  
RV: C Ken Johnson  
White: BV:(19) k Ed Serrine  
RV: k Ed Serrine  
Blue: BV:(9) p Karl Rau  
RV: H Norman Rau  
Mottled: BV:(13) H Jeff Schwabrow  
RV: H Norman Rau  
Buff: BV:(22) p Karl Rau  
RV: p Donna Lamb  
Splash: BV:(5) p Norman Rau  
RV: p Karl Rau  
Brown Red: BV:(7) H Laura Adams  
RV: H Bill Ziehm  
Barred: BV:(1) k Gladys Fetzer  
Columbian: BV:(5) p Karl Rau  
RV: k Karl Rau

BB Standard: Buff k, Bill West  
RB Standard: Blue H, Jay Birden

Black: BV:(6) k Bill West  
RV: p Bill West  
Buff: BV:(2) k Bill West  
RV: na  
Blue: BV:(1) H Jay Birden

**NORTHWEST POULTRY; Woodward, OK**  
Regional

na

Total Cochins:28  
Total Bantams:13  
Total Standards:15

Judge(s):na

Overall CH.: na  
BB Bantam: na  
RB Bantam: na

Black: BV:(7) p Bressler  
RV: k Bressler  
White: BV:(6) k Bressler  
RV: p B Edwards

BB Standard: na  
RB Standard: na

Black: BV:(6) k AJ Poultry  
RV: p Fuller  
Brown Red: BV:(2) p Mark Kelly  
RV: H Mark Kelly  
Buff: BV:(6) k D Peach  
RV: p D Peach

**SO.MO. POULTRY; Springfield, MO**  
Regional

Oct.18/19, 1997

Total Cochins:60  
Total Bantams:7351  
Total Standards:9

Judge(s):Heyward

Overall CH.: Black p, B&K Miller  
BB Bantam: Black p, B&K Miller  
RB Bantam: White p, AM Armstrong

Black: BV:(29) p B&K Miller  
RV: C P&L Bucella  
White: BV:(18) p AM Armstrong  
RV: k AM Armstrong  
Brown Red: BV:(4) k Hannah Taylor  
RV: p Hannah Taylor

BB Standard: Buff k, AM Armstrong  
RB Standard: Black k, P&L Bucella

Black: BV:(5) k P&L Bucella  
RV: C Rob Dixon  
Buff: BV:(4) k AM Armstrong  
RV: H AM Armstrong

**NEBRASKA STATE; Lincoln, NE**  
Regional

Nov. 8/9, 1997

Total Cochins:60  
Total Bantams:52  
Total Standards:8

Judge(s):Beauford

Overall CH.: Black H, Ed Zeleny  
BB Bantam: White p, Pat Lacey  
RB Bantam: White k, Pat Lacey

Black: BV:(17) p K&B Miller  
RV: H AM Armstrong  
White: BV:(24) p Pat Lacey  
RV: k Pat Lacey  
Blue: BV:(2) k K&B Miller  
RV: p K&B Miller  
Buff: BV:(3) H AM Armstrong  
RV: C AM Armstrong  
Birchen: BV:(1) C Mark Patton  
Part: BV:(2) p K&B Miller  
RV: k K&B Miller  
Barred: BV:(3) p R. Rieken

BB Standard: Black H, Ed Zeleny  
RB Standard: Buff k, AM Armstrong

Black: BV:(3) H Ed Zeleny  
RV: k Ed Zeleny  
Part: BV:(2) H A Reiber  
RV: p Judy Englehart  
Buff: BV:(3) H AM Armstrong  
RV: C AM Armstrong

OKLAHOMA POULTRY; Shawnee, OK  
Regional  
Dec. 6/7, 1997

Total Cochins:81  
Total Bantams:67  
Total Standards:14

Judge(s):na

Overall CH.: Black p, Bressler  
BB Bantam: Black p, Bressler  
RB Bantam: White p, Bressler

Black: BV:(35) p Bressler  
RV: C P&L Bucella  
White: BV:(22) p Bressler  
RV: C P&L Bucella  
Blue: BV:(3) k Laverne Herring  
RV: p Laverne Herring  
Buff BV:(7) C Don Holt  
RV: H Don Holt

JR: BB Black H Lindsay Hall  
RB White C Brad McGehee

BB Standard: Black p, P&L Bucella  
RB Standard: Buff k, D Peach

Black: BV: (4) p P&L Bucella  
RV: k P&L Bucella  
Blue: BV:(3) p Laverne Herring  
RV: p Laverne Herring  
Buff: BV:(7) k D Peach  
RV: p Dennis Wollard

JR: BB Black H Rob Dixon  
RB Buff k Derek Peach

ABILENE POULTRY; Abilene, TX  
Regional  
Oct. 25, 1997

Total Bantams:23

Judge(s):Hill

BB Bantam: Black p, R&A Estlack  
RB Bantam: White C, Billy Edwards

Black: BV:(10) p R&A Estlack  
RV: p R&A Estlack  
White: BV:(6) C Billy Edwards  
RV: C Billy Edwards  
Blue: BV:(1) p R&A Estlack  
Sil. Lac.: BV:(4) p R&A Estlack  
RV: k R&A Estlack  
Frz: BV:(2) C Billy Edwards  
H Billy Edwards

BB Standard: Black k, William Ryan  
RB Standard: Black p, Jeff Iurato

ROCHESTER POULTRY; Mumford, NY  
Regional  
Oct. 5, 1997

Total Cochins:72  
Total Bantams:70  
Total Standards:2

Judge(s):na

Overall CH.: White H, Jamie Matts  
BB Bantam: White H, Jamie Matts  
RB Bantam: Black H, Kay St Amour

Black: BV:(30) H Kay St Amour  
RV: k Bill Ziehm  
White: BV:(5) H Jamie Matts  
RV: C Laura Adams  
Mottled: BV:(5) C Jmaie Matts  
RV: H Jmaie Matts  
Buff BV:(5) H Wightman  
RV: p Bill Ziehm  
Red: BV:(3) C Wightman  
RV: k Wightman  
Brown Red: BV:(9) H Wightman  
RV: H Bill Ziehm  
Barred: BV:(3) p Wightman  
RV: C Wightman  
Partridge: BV:(3) H Jamie Matts  
RV: C Jamie Matts  
Birchen: BV:(2) p Wightamn  
RV: k Wightamn  
FR Birchen: BV:(1) C Sandhu  
FR Red: BV:(1) C Sandhu  
FR Black: BV:(4) k Sandu  
p Sandhu

BB Standard: Partridge H, Galen Lewis  
RB Standard: Blue H, Devon Lewis

NE WISCONSIN; Manitowac, WI  
Regional  
Jun. 14, 1997

Total Cochins:35  
Total Bantams:29  
Total Standards:6

Judge(s):Lewis

Overall CH.: Black C, Andrea Soreson  
BB Bantam: Black C, Tim Hooker  
RB Bantam: White C, Jim Wolfe

Black: BV:(19) C Tim Hooker  
RV: k Tim Hooker  
White: BV:(4) C Jim Wolfe  
RV: H Jim Wolfe  
Blue: BV:(5) C F Leanne  
RV: C F Leanne  
FZ: BV:(1) C J Hendzel

BB Standard: Black C, Andrea Sorenson  
RB Standard: Buff C, Brian Schaal

NA, na...1  
Regional  
na/97

Total Cochins:50  
Total Bantams:36  
Total Standards:14

Judge(s):na

Overall CH.: na  
BB Bantam: na  
RB Bantam: na

Black: BV:(10) k Don Wright  
RV: H Don Wright  
White: BV:(8) H Don Wright  
RV: C Don Wright  
Blue: BV:(1) H Wightman  
Buff BV:(8) C Dean Ennis  
RV: H Don Wright  
Birchen BV:(2) p Wightman  
RV: k Wightman  
Brown Red: BV:(3) H Wightman  
RV: p Wightman  
Barred: BV:(1) H Wightman  
Partridge: BV:(2) C C Sanderlin  
RV: H C Sanderlin  
Red: BV:(1) H Wightman

BB Standard:na  
RB Standard: na

Black: BV:(6) H Kay St Amour  
RV: p Kay St Amour  
Blue: BV:(4) k Kay St amour  
RV: p Kay St Amour  
Partridge: BV:(1) H Kay St Amour  
Sil Lac.: BV:(1) p J Rice  
Splash: BV:(2) p M Rice  
RV: k M Rice  
BR: BV:(1) k Z Rice

NEW ULM CLASSIC; New Ulm, MN  
Regional  
Oct 11/12, 1997

Total Bantams:13

Judge(s):Denny

BB Bantam: White H, C Stowers  
RB Bantam: White C, C Stowers

Black: BV:(4) p R. Andree  
RV: k R. Andree  
White: BV:(3) H C Stowers  
RV: C C Stowers  
Buff BV:(4) H R andree  
RV: p R Andree  
Barred: BV:(2) k K Rupprecht

**BAY CITY POULTRY; Alma, MI**  
Regional  
Oct. 11/12, 1997

Total Cochins:103  
Total Bantams:68  
Total Standards:35

Judge(s):Montieth/LaRoche

Overall CH.: na

BB Bantam: White p, Joe Hume  
RB Bantam: Black H. Clyde Green

Black: BV:(11) H Clyde Green  
RV: k Kim Smith  
White: BV:(7) k Joe Hume  
RV: C Clyde Green  
Blue: BV:(9) p Kim Smith  
RV: C Kim Smith  
Buff: BV:(9) H Kim Smith  
RV: H Kim Smith  
Partridge: BV:(3) p Kim Smith  
RV: p Kim Smith  
Red: BV:(21) k Diane Colsgrove  
RV: p Diane Colsgrove  
Barred: BV:(6) k Clyde Green  
RV: Jones & Ross

BB Standard: Black p, Bill Mayer  
RB Standard: Black p, Bill Mayer

Black: BV:(9) p Bill Mayer  
RV: p Bill Mayer  
White: BV:(6) H Kim Smith  
RV: H Clyde Green  
Blue: BV:(5) H Kim Smith  
RV: H Kim Smith  
Red: BV:(15) p Diane Colsgrove  
RV: p Diane Colsgrove

**NORTHWEST WINTER; Hillsboro, OR**  
Regional  
Nov. 22/23, 1997

Total Cochins:63  
Total Bantams:55  
Total Standards:8

Judge(s):Oakes,Agajanian

Overall CH.: Brown Red k, Mark Kalack

BB Bantam: Brown Red k, Mark Kalack  
RB Bantam: Black H, Joe Mazur

Black: BV:(32) H Joe Mazur  
RV: C Joe Mazur  
White: BV:(8) k Eric Kutch  
RV: p Doddie Trudsen  
Blue: BV:(4) p Joe Mazur  
RV: p Joe Mazur  
Mottled: BV:(1) H Joe Mazur  
Buff: BV:(1) k Dorothy Parker  
Birchen: BV:(2) k Karin Lamberson  
RV: p Catlin Ryan  
Brown Red: BV:(2) k Mark Kulak  
RV: k Mark Kulak  
Frizzle: BV:(4) na

BB Standard: Black H, Vern Sorenson  
RB Standard: Black H, Vern Sorenson

**LITTLE RHODY; Warwick, RI**  
Regional  
Nov. 28/29, 1997

Total Cochins:77  
Total Bantams:67  
Total Standards:10

Judge(s):Wabek

Overall CH.: Black k, Karl Rau

BB Bantam: Black k, Karl Rau  
RB Bantam: White k, Bill Sirrine

Black: BV:(19) k Karl Rau  
RV: p Karl Rau  
White: BV:(10) k Ed Sirrine  
RV: p Wightman  
Blue: BV:(6) p Norman Rau  
RV: p Norman Rau  
Mottled: BV:(8) p Karl Rau  
RV: p Karl Rau  
Buff: BV:(16) p Bob Hawes  
RV: p Donna Lamb  
Splash: BV:(5) p Karl Rau  
RV: p Norman Rau  
Brown Red: BV:(4) p Laura Adams  
RV: H Laura Adams

BB Standard: Buff H, Beth Adams  
RB Standard: Black k, Kay St Amour

Black: BV:(2) k Kay St Amour  
RV: p L Robillard  
Buff: BV:(2) H Beth Adams  
RV: H Beth Adams  
Partridge: BV:(6) C Park Ave  
RV: H Park Ave

**KANSAS CLASSIC; Hutchinson, KS**  
Regional  
Nov. 15/16, 1997

Total Cochins:39  
Total Bantams:27  
Total Standards:12

Judge(s):na

Overall CH.: White p,

BB Bantam: White p, Norman Rau  
RB Bantam: Black p, Bob Hawes

Black: BV:(17) p Bressler's  
RV: H Bressler's  
White: BV:(18) p Prado  
RV: k Prado  
Blue: BV:(2) H Lisenby  
RV: C Lisenby

BB Standard: na  
RB Standard: na

Buff: BV:(7) k Kardosh  
RV: p Kardosh  
White: BV:(5) H Kardosh  
RV: H Kardosh

**OHIO NATIONAL; Columbus, OH**  
Regional  
Nov. 8/9, 1997

Total Cochins:135  
Total Bantams:95  
Total Standards:40

Judge(s):Padgett

Overall CH.: Buff k, Brian Justice

BB Bantam: Black p, Hemleben  
RB Bantam: White k, Knox

Black: BV:(45) p Hemleben  
RV: k Knox  
White: BV:(13) C Knox  
RV: k Rieman  
Blue: BV:(5) H Patterson  
RV: k Knox  
Mottled: BV:(9) p Yobst  
RV: k Clark  
Buff: BV:(8) p Justice  
RV: k Justice  
Partridge: BV:(4) H Brodericks  
RV: p Brodericks  
Splash: BV:(2) C Patterson  
RV: p Brodericks  
Barred: BV:(9) p Knox  
RV: k Knox

BB Standard: Buff k, Justice  
RB Standard: Buff p, Schaal

Black: BV:(8) k Mayer  
RV: p Mac Harp  
White: BV:(16) C Mac Harp  
RV: H Mac Harp  
Buff: BV:(13) k Justice  
RV: p Schaal  
Partridge: BV:(3) p Broderick  
RV: k Broderick

**HART COUNTY; Hartwell, GA**  
Regional  
Dec. 13, 1997

Total Cochins:47  
Total Bantams:41  
Total Standards:6

Judge(s):Kane

Overall CH.: Black H, Otes Ray

BB Bantam: Black H, Otes Ray  
RB Bantam: Blue p, Otes Ray

Black: BV:(16) H Otes Ray  
RV: p Randall Ricard  
White: BV:(9) p Nuovo  
RV: k Nuovo  
Blue: BV:(5) p Otes Ray  
RV: p Otes Ray  
Buff: BV:(2) p D Ricard  
RV: p D Ricard  
Splash: BV:(4) p Otes Ray  
RV: k Otes Ray  
Barred: BV:(5) p Otes Ray  
RV: p Otes Ray

BB Standard: Black H, Dawn ware  
RB Standard: Blue H, Dawn Ware

FORSYTH FOWL; Winston-Salem, NC  
Regional  
Nov. 29, 1997

Total Cochins:87  
Total Bantams:74  
Total Standards:14

Judge(s):Durb

Overall CH.: Black p, Crane  
BB Bantam: Black p, Crane  
RB Bantam: White k, G&A Edwards

Black: BV:(30) p Crane  
RV: k G&E Edwards  
White: BV:(26) k G&A Edwards  
RV: p Crane  
Partridge: BV:(6) H J Penny  
RV: p J Penny  
Brown Red: BV:(3) p M Revels  
RV: H M Revels  
Barred: BV:(2) C Walter Strupe  
RV: H Walter Strupe  
Sil.Laced: BV:(2) k McAllister  
RV: p McAllister  
Splash: BV:(2) p Spencer Revels  
RV: k Spencer Revels

BB Standard: Black p, T Cornatzer  
RB Standard: Black p, T Cornatzer

Black: BV:(3) p T Cornatzer  
RV: p T Cornatzer  
Blue: BV:(3) H Andy marsinko  
RV: C Roy Manning  
Buff: BV:(8) k G&A Edwards  
RV: H Andy marsinko

TUSCON POULTRY; Tuscon, AZ  
Regional  
Nov. 15/16, 1997

Total Cochins:108  
Total Bantams:103  
Total Standards:5

Judge(s):na

Overall CH.: Black p,  
BB Bantam: Black p,  
RB Bantam: White p,

Black: BV:(32) p L&M Peterson  
RV: p L&M Peterson  
White: BV:(28) k L. Kutch  
RV: k M. Byrne  
Blue: BV:(11) H Jay Horn  
RV: p Jay Horn  
Mottled: BV:(17) p J Van Bezoooyen  
RV: H N Porter  
Buff BV:(4) H E Payton  
RV: H D Peery  
Partridge: BV:(1) p L Hult

BB Standard: Black p, M Byrne  
RB Standard: Buff k, L&M Peterson

CENTRAL FLORIDA; Tampa, FL  
Regional  
Dec. 13/14, 1997

Total Cochins:87  
Total Bantams:59  
Total Standards:28

Judge(s):Durb/Yeaw

Overall CH.: na  
BB Bantam: Black k, Ron Proffitt  
RB Bantam: White k, Penny Harris

Black: BV:(23) k Penny HARRIS  
RV: p Penny Harris  
White: BV:(24) k Penny Harris  
RV: C Penny Harris  
Blue: BV:(2) p J Thyssen  
RV: k J Thyssen  
Mottled: BV:(5) C J Thyssen  
RV: k D Robinson  
Bl Mo.: BV:(1) p Jim Swanson  
Frz Mo: BV:(1) k D Robinson  
Frz Bl Mo: BV:(2) p D Robinson  
Frz Bl.: BV:(1) k D Robinson

BB Standard: Black H, Tim Brown  
RB Standard: White k, J Thyssen

Black: BV:(13) H Tim Brown  
RV: H Tim Brown  
White: BV:(3) p J Thyssen  
RV: k J Thyssen  
Buff: BV:(10) p J Thyssen  
RV: k R Ward

GUIL-RAND; Greensboro, NC  
Regional  
Dec. 6, 1997

Total Cochins:82  
Total Bantams:78  
Total Standards:4

Judge(s):Ventage

Overall CH.: Black p, Tom Cornatzer  
BB Bantam: Black H, G&A Edwards  
RB Bantam: White p, Craines

Black: BV:(24) H G&A Edwards  
RV: p Craine  
White: BV:(13) p Craine  
RV: C B&P Osborne  
Buff BV:(21) p D Ennis  
RV: H G&A Edwards  
Partridge: BV:(8) C Judy Penny  
RV: p Judy Penny  
Sil LAc.: BV:(3) p N.Westmoreland  
RV: k N.Westmoreland  
Gol lac.: BV:(5) p N.Westmoreland  
RV: k N. Westmoreland

BB Standard: Black p, T Cornatzer  
RB Standard: Black p, T Cornatzer

BEAVER BANTAM; Columbus, WI  
Regional  
Oct. 11, 1997

Total Cochins:85  
Total Bantams:64  
Total Standards:16

Judge(s):Halbach

Overall CH.: na  
BB Bantam: White p, Paul Laatsch  
RB Bantam: White C, Leon Zimdars

Black: BV:(25) C Leon Zimdars  
RV: H Andy Sorenson  
White: BV:(18) p Paul Laatsch  
RV: H Leon Zimdars  
Blue: BV:(5) k B&J Krueger  
RV: C Mike Synder  
Buff: BV:(5) p Chad Caine  
RV: k Dave Laatsch  
Gold Lace: BV:(2) H Mike Synder  
RV: H Mike Synder  
Partridge: BV:(6) H D Schawndt  
RV: k D Schawndt  
Splash: BV:(1) k Jim Wolf

BB Standard: na  
RB Standard: na

Black: BV:(8) H A Sorenson  
RV: C A Sorenson  
Partridge: BV:(1) p Posthuma  
Buff: BV:(7) k Brian Schaal  
p Brian Schaal

BAKERSFIELD; Kern, CA  
Regional  
Nov. 1/2, 1997

Total Cochins:29  
Total Bantams:23  
Total Standards:6

Judge(s):Porr

Overall CH.: White k, L. Kutch  
BB Bantam: White k, L. Kutch  
RB Bantam: Black k, L Kutch

Black: BV:(11) k L Kutch  
RV: p A Devlin  
White: BV:(4) k L Kutch  
RV: p J Severson  
Blue: BV:(7) H J Horn  
RV: p A Devlin  
Buff BV:(1) C M Hoyt

BB Standard: Partridge H, Jim Wheeler  
RB Standard: Black H, D Aten

Black: BV:(1) H D Aten  
White: BV:(3) p D Aten  
RV: na  
Buff: BV:(1) p A Toone  
Partridge: BV:(1) H Jim Wheeler

ILL-MO; Highland, IL  
Regional  
Nov. 1/2, 1997

Total Cochins:88  
Total Bantams:69  
Total Standards:19

Judge(s):Karasek

BB Bantam: White k, J. Currens  
RB Bantam: Black p, L&M Peterson

Black: BV:(33) p L&M Peterson  
RV: k J. Collins  
White: BV:(27) k J. Currens  
RV: p J. Currens  
Partridge: BV:(2) H Mike Tolka  
RV: C Mike Tolka  
Buff BV:(4) p B Blankenship  
RV: H B Blankenship

BB Standard: Buff k, L&M Peterson  
RB Standard: BR H, T. Wiltshire

Black: BV:(4) p Tom Wiltshire  
RV: p Steve Johnson  
Blue: BV:(1) p Tom Wiltshire  
Brown Red: BV:(2) H Tom Wiltshire  
RV: C Tom Wiltshire  
Buff: BV:(12) k L&M Peterson  
RV: p L&M Peterson

LOUISIANA STATE; Shreveport, LA  
Regional  
Nov.1, 1997

Total Cochins:31  
Total Bantams:28  
Total Standards:3

Judge(s):na

Overall CH.: Black k, Don Holt  
BB Bantam: Black k, Don Holt  
RB Bantam: White k, Jason Mayeaux

Black: BV:(8) k Don Holt  
RV: H Don Holt  
White: BV:(9) k Jason Mayeaux  
RV: H Don Holt  
Buff BV:(11) k Don Holt  
RV: C Don Holt

BB Standard: Black H, Jason Mayeaux  
RB Standard: Black k Jason Mayeaux

INDIANA POULTRY; Connerville, IN  
Regional  
Dec 6/7, 1997

Total Cochins:117  
Total Bantams:90  
Total Standards:27

Judge(s):Monteith

Overall CH.: na  
BB Bantam: White p,  
RB Bantam: Black H,

Black: BV:(43) H James Collins  
RV: p James Collins  
White: BV:(28) p Jimmie Currens  
RV: p Jim Wolfe  
Blue: BV:(6) k b Krueger  
RV: k B Krueger  
Mottled: BV:(1) C Diane Smith  
Buff BV:(5) p Brian Justice  
RV: k Brian Justice  
Splash: BV:(1) k J&S Clark  
Sil. LAc.: BV:(2) k J&S Clark  
RV: p J&S Clark  
Partridge: BV:(2) k Broderick  
p Broderick

BB Standard: Buff k, Brian Justice  
RB Standard: Buff k, Brian Justice

Black: BV:(12) k Bob Carothers  
RV: p Bob Carothers  
Buff: BV:(10) k Brian Justice  
RV: k Brian Justice  
Partridge: BV:(5) p A Walters  
RV: k A Walters

SOUTHEAST KANSAS; Girard, KS  
Regional  
na, 1997

Total Cochins:39  
Total Bantams:30  
Total Standards:9

Judge(s):Heywood

Overall CH.: Buff k, AM Armstrong  
BB Bantam: White H, AM Armstrong  
RB Bantam: Black H, AM Armstrong

Black: BV:(19) H AM Armstrong  
RV: k K&B Miller  
White: BV:(11) H AM Armstrong  
RV: C K&B Miller

BB Standard: Buff k, AM Armstrong  
RB Standard: na

Black: BV:(4) C Rob Dixon  
RV: H Rob Dixon  
White: BV:(5) k AM Armstrong  
RV: p AM Armstrong

MINNESOTA; Hutchinson, MN  
Regional  
Oct. 25/26

Total Cochins:105  
Total Bantams:90  
Total Standards:15

Judge(s):Thomforde

Overall CH.: White p, Pat Lacey  
BB Bantam: White p, Pat Lacey  
RB Bantam: Partridge p, Jon Mohr

Black: BV:(26) H L&M Peterson  
RV: p L&M Peterson  
White: BV:(28) p Pat Lacey  
RV: H Pat Lacey  
Blue: BV:(3) k Bill Krueger  
RV: C Bill Krueger  
Mottled: BV:(1) H D&A Miller  
Buff BV:(15) C D Laatsch  
RV: H L&M Peterson  
Gold Lac.: BV:(2) k B Krewal  
RV: p B Krewal  
Red: BV:(3) p D Fethke  
RV: p D Fethke  
Partridge: BV:(2) p Jon Mohr  
RV: p Jon Mohr  
FZ black: BV:(7) p D Laatsch  
RV: H D Laatsch  
FZ White: BV:(2) p C Stowers  
RV: H D&A Miller

BB Standard: na  
RB Standard: Black p, Robert Carothers

Black: BV:(2) p Robert Carothers  
RV: dq  
White: BV:(1) p Tom Wiltshire  
Blue: BV:(1) p Tom Wiltshire  
Buff: BV:(11) p Brian Schaal  
RV: k L&M Peterson

SOONER CLASSIC; Claremont, OK  
Regional  
Nov. 29, 1997

Total Bantams:32

Judge(s):na

BB Bantam: Black C, Ken Miller  
RB Bantam: White p, Ken Miller

Black: BV:(12) C Ken Miller  
RV: k Ken Miller  
White: BV:(15) p Ken Miller  
RV: C Ken Miller  
Blue: BV:(2) k Ken Miller  
RV: p Ken Miller  
Buff BV:(1) p Carl Meyer

LA COUNTY; LA, CA  
Regional  
Feb. 17/22, 1997

Total Bantams:

Judge(s):na

BB Bantam: na

RB Bantam: Black C Robin Bates

Black: BV:(5) C Robin bates  
RV: H Robin bates  
White: BV:(7) H S Burbeck  
RV: H S Burbeck  
Blue: BV:(2) p Mary Snyder  
RV: p Mary Snyder  
Mottled: BV:(2) p Mary Snyder  
Birchen BV:(5) p James Hierner  
RV: p Mary Snyder  
Barred: BV:(5) p S Burbeck

MARYLAND STATE; na, MD

Regional  
Nov 1/2, 1997

Total Cochins:  
Total Bantams:  
Total Standards:

Judge(s):na

Overall CH.: Black p,  
BB Bantam: Black p,  
RB Bantam: White p,

Black: BV:(18) p Bill Ziehm  
RV: p Bill Ziehm  
White: BV:(10) p Gillis & McCarthy  
RV: k Gillis & McCarthy  
Blue: BV:(2) p Jim Conlan  
RV: p Jim Conlan  
Mottled: BV:(3) p Jim Conlan  
RV: k Kay St Amour  
Buff BV:(9) p Dean Ennis  
RV: p Bill Ziehm  
Blue Mot.: BV:(2) C Kay ST Amour  
RV: p Jin Conlan  
Partridge: BV:(2) p Hillenbrand  
RV: H Hillenbrand  
Sil Lac.: BV:(2) p C Mc Allister  
RV: k C Mc Allister  
Splash: BV:(1) C Jin Conlan

BB Standard: Black H, Jim Conlan  
RB Standard: Buff H, Andy Marsinko

Black: BV:(11) H Jim Conlan  
RV: p Jim Conlan  
White: BV:(5) H Tom Rice  
RV: k Tom Rice  
Blue: BV:(12) H Tom Rice  
RV: H Andy Marsinko  
Buff: BV:(3) H Andy Marsinko  
RV: H C Esbenshade  
Gol Lac: BV:(5) H Kay St AMour  
RV: C Kay St Amour  
Part.: BV:(2) k Tom Rice  
RV: C Kay St Amour  
Sil. Lac.: BV:(5) p Pat Rice  
RV: p Pat Rice  
Splash: BV:(2) H Jim Conlan  
RV: k Tom Rice

CENTRAL OK; Guthrie, OK  
Regional  
Oct 18, 1997

Total Cochins:21

Total Bantams:11

Total Standards:10

Judge(s):Britt

Overall CH.: Black H, Rock Hill  
BB Bantam: Black H, Rock Hill  
RB Bantam: White p, Bresslers

Black: BV:(5) H Rock Hill  
RV: k Bressler  
White: BV:(3) p Bressler  
RV: p Bressler  
Blue: BV:(3) p L Herring  
RV: p L Herring

BB Standard: Buff p, Derek Peach  
RB Standard: Buff k, Derek Peach

Black: BV:(3) k A&J Poultry  
RV: p L Herring  
Buff: BV:(3) k Derek Peach  
RV: p Derek Peach  
Blue: BV:(2) p L Herring  
RV: p L Herring  
Brown Red: BV:(2) p A&J  
RV: p A&J

CARPET CITY; Dalton, GA  
Regional  
Oct 25, 1997

Total Bantams:13

Judge(s):Jones

BB Bantam: Black k, Betty Vines  
RB Bantam: Blue k, Betty Vines

Black: BV:(3) k Betty Vines  
RV: k Betty Vines  
White: BV:(2) p Betty Vines  
RV: p Betty Vines  
Blue: BV:(3) k Betty Vines  
RV: H Betty Viens  
Mottled: BV:(1) k T Campbell  
Bl Mo.: BV:(1) H T Campbell  
Birchen BV:(1) C L Underhill  
Sil. Lac: BV:(0) p Betty Vines  
RV: p Betty Vines

SO. OHIO; Lucasville, OH  
Regional  
Oct. 4/5, 1997

Total Cochins:61

Total Bantams:46

Total Standards:15

Judge(s):Yeaw

Overall CH.: Buff k, Brian Justice  
BB Bantam: Black k, R&L Knox  
RB Bantam: Black K, R&L Knox

Black: BV:(13) k R&L Knox  
RV: k R&L Knox  
White: BV:(16) p J Yobst  
RV: C Leslie Dyer  
Blue: BV:(3) k R&L Knox  
RV: p R&L Knox  
Mottled: BV:(3) H Leslie Dyer  
RV: H Leslie Dyer  
Buff BV:(5) p Brian Justice  
RV: p Brian Justice  
Bl. Mo.: BV:(1) p Leslie Dyer  
Barred: BV:(5) k R&L Knox  
RV: k R&L Knox

BB Standard: Buff k, Brian Justice  
RB Standard: na

Part.: BV:(3) H Broderick  
RV: H Broderick  
Buff BV:(12) p Brian Justice  
RV: p Brian Justice

RED HILL; Mt Carmel, IL  
Regional  
Oct. 4, 1997

Total Bantams:53

Judge(s): Jonas

BB Bantam: White p, Jim Currens  
RB Bantam: White p, Jim Currens

Black: BV:(19) C Jim Collins  
RV: H Ray Haiesman  
White: BV:(18) p Jim Currens  
RV: p Jim Currens  
Blue: BV:(7) p T&S Isler  
RV: p Matt McAmmon  
Red: BV:(3) p W Nicholson  
RV: p W Nicholson  
Partridge: BV:(3) p Mike Tolka  
RV: p Mike Tolka

CENTRAL COAST; Paso Robles, CA  
Regional  
Oct. 18/19, 1997

Total Cochins:42  
Total Bantams:40  
Total Standards:2

Judge(s):Owen

Overall CH.: Black k, Erika Ray  
BB Bantam: Black k, Erika Ray  
RB Bantam: Mottled H, Erika Ray

Black: BV:(18) k Erika Ray  
RV: k G Kutch  
White: BV:(2) k G Kutch  
RV: p A Bellosmini  
Blue: BV:(8) p J Horn  
RV: p J Horn  
Mottled: BV:(1) H Erika Ray  
Buff BV:(5) C R Stockton  
RV: p Jess Brown  
Gol Lac.: BV:(6) C M Smith  
RV: p M SMith

BB Standard: PArt H, Jim Wheeler  
RB Standard: Buff C, Chris Bitterts

LAND/BLACKHAWK; Janesville, WI  
Regional  
Sep. 6, 1997

Total Cochins:43  
Total Bantams:39  
Total Standards:4

Judge(s):Denny

Overall CH.: Black k, Tim Hooker  
BB Bantam: Black k, Tim Hooker  
RB Bantam: White p, Pat Lacey

Black: BV:(14) k Tim Hooker  
RV: p Tim Hooker  
White: BV:(11) p Pat Lacey  
RV: C Pat Lacey  
Blue: BV:(2) k B&J Krueger  
RV: k B&J Krueger  
Buff BV:(3) k D&J Laatsch  
RV: C D&J Laatsch  
Frizzle: BV:(4) p G Scrrres  
RV: p D&J Laatsch

BB Standard: Buff p, D&J Laatsch  
RB Standard: Buff k, D&J Laatsch

WHITE RIVER; Spence, IN  
Regional  
Aug. 30, 1997

Total Bantams:44

Judge(s):na

BB Bantam: Black H, Lit Bit Farm  
RB Bantam: White C, Jim Currens

Black: BV:(10) H Lit Bit  
RV: H Brad Jones  
White: BV:(14) C Jim Currens  
RV: H Jim Currens  
Blue: BV:(4) C M Dennison  
RV: k Matt Mccammon  
Mottled: BV:(4) C J&S Clark  
RV: p Matt McCammon  
Buff BV:(3) C Fred Abbott  
RV: k M Dennison  
Partridge: BV:(2) C M Dennison  
RV: H M Dennison  
Red: BV:(2) C Nicholans  
RV: H Nicholans  
Barred: BV:(5) p Rassey

BB Standard: Black k,  
RB Standard: Black p,

GATEWAY/SMOKIES; Seveirville, TN  
Regional  
Sep. 20, 1997

Total Cochins:30  
Total Bantams:27  
Total Standards:3

Judge(s):Burton

BB Bantam: White p, Rocky Hughey  
RB Bantam: Birchen C, Linda Underhill

Black: BV:(9) C Darren Shell  
RV: p Darren Shell  
White: BV:(5) p R Hughey  
RV: p R Hughey  
Mottled: BV:(6) C Dorius Robinson  
RV: H Terry Campbell  
Bl. Mo.: BV:(2) k Doris Robinson  
RV: p Terry Campbell  
Birchen BV:(2) C Linda Underhill  
RV: p l Whitson  
Red: BV:(1) p A KinmBrough  
Barred: BV:(2) p A KimBrough

BB Standard: na  
RB Standard: na

WISCONSIN; Janesville, WI  
Regional  
Sep 27/28, 1997

Total Cochins:102  
Total Bantams:77  
Total Standards:25

Judge(s):Britt

Overall CH.: White p, Pat Lacey  
BB Bantam: White p, Pat Lacey  
RB Bantam: Black k, Tim Hooker

Black: BV:(29) k Tim Hooker  
RV: p Pat Lacey  
White: BV:(27) p Pat Lacey  
RV: k Pat Lacey  
Blue: BV:(9) C B&J Krueger  
RV: p Grandview  
Buff BV:(6) k D&J Laatsch  
RV: k D&J Laatsch  
Gol. Lac: BV:(1) k Todd Olson  
Sil. Lac: BV:(1) k Todd Olson  
Splash: BV:(4) p Grandview

BB Standard: Black p, Robert Carothers  
RB Standard: Buff p, Brian Schaal

Black: BV:(11) p Robert Cartothers  
RV: k Robert Carothers  
White: BV:(1) p Tom Wiltshire  
Blue: BV:(2) p Tom Wiltshire  
Buff BV:(8) p Brian Schaal  
RV: p Brian Schaal  
Brown Red: BV:(3) H Tom Wiltshrie

DUCK RIVER; Shelbyville, TN  
Regional  
Oct. 4, 1997

Total Cochins:52  
Total Bantams:36  
Total Standards:16

Judge(s):See

Overall CH.: Blue p, Floyd Spry  
BB Bantam: Blue p, Floyd Spry  
RB Bantam: Black p, DArren Shell

Black: BV:(13) p Darren Shell  
RV: H Darren Shell  
White: BV:(2) H Floyd Spry  
RV: C Folyd Spry  
Blue: BV:(5) p Floyd Spry  
RV: H Floyd Spry  
Mo Fz: BV:(1) C Terry Cmapbell  
W Fz: BV:(1) C Terry Campbell  
Bircehn: BV:(1) C Underhill  
Bl Mo: BV:(1) H Terry Campbell  
Blk Fz: BV:(6) p Cecil Linderamn  
RV: k Terry Campbell  
Red Fz: BV:(2) k Kimbrough

BB Standard: Buff p, Tim Brown  
RB Standard: Black H, Tim Brown

ILLINI; Belvidere IL  
Regional  
Sep. 13/14, 1997

Total Cochins:88  
Total Bantams:66  
Total Standards:23

Judge(s):Kararesk

Overall CH.: Black p,  
BB Bantam: Black p,  
RB Bantam: White p,

Black: BV:(na) p Tim Hooker  
RV: H Tim Hooker  
White: BV:(na) p Robert Carothers  
RV: C Robert Carothers  
Blue: BV:(na) k Jim Wolfe  
RV: C Jim Wolfe  
Splash: BV:(na) p Jim Wolfe  
RV: k Jim Wolfe  
Buff BV:(na) p J&D Laatsch  
RV: p J&D Laatsch  
Part.: BV:(na) p D Miller  
RV: p D Miller  
Brown Red: BV:(na) k J&D Laatsch  
RV: H J&D Laatsch  
Fz: BV:(na) p J&D Laatsch  
RV: k J&D Laatsch

BB Standard: Black p, Robert Carothers  
RB Standard: Black k, Robert Carothers

Black: BV:(na) p Robert Carothers  
RV: k Robert Carothers  
White: BV:(na) p Tom Wiltshire  
RV: C Robert Carothers  
Blue: BV:(na) p Tom Wiltshire  
Splash: BV:(na) p Jim Wolfe  
RV: k Jim Wolfe  
Buff BV:(na) p Brain Schaal  
RV: p Robert Carothers

SOUTHWEST OK; Altus, OK  
Regional  
Mar. 22, 1997

Total Cochins:141  
Total Bantams:101  
Total Standards:40

Judge(s):Malone

Overall CH.: White k, Luther Vines  
BB Bantam: White K, Luther Vines  
RB Bantam: Black p, Luther Vines

Black: BV:(57) p Luther Vines  
RV: k Paul Bucella  
White: BV:(21) k Luther Vines  
RV: p Paul Bucella  
Blue: BV:(8) H Luther vines  
RV: p Luther Vines  
Buff BV:(8) k Don Holt  
RV: H Don Holt  
Sil Lac: BV:(2) p Luther Vines  
RV: p Luther Vines  
Fz: BV:(5) C Billy Edwards  
RV: H Billy Edwards

BB Standard: Black H, Forrest Beauford  
RB Standard: Buff k, Paul Bucella

Black: BV:(18) H Forrest Beauford  
RV: k Mark Kelley  
Blue: BV:(5) k Mark Kelley  
RV: p Mark Kelley  
Buff BV:(12) k Paul Bucella  
RV: H Paul Bucella

NY STATE; Syracuse, NY  
Regional  
Aug. 21, 1997

Total Cochins:93  
Total Bantams:79  
Total Standards:14

Judge(s):na

Overall CH.: Blue C, T&R Waldau  
BB Bantam: Blue C, T&R Waldau  
RB Bantam: Balck C, T&R Waldau

Black: BV:(16) C Waldau  
RV: C Waldau  
White: BV:(9) C Waldau  
RV: H Waldau  
Blue: BV:(8) C Waldau  
RV: p Waldau  
Mottled: BV:(5) p Cullen  
RV: k Broyille  
Buff BV:(6) p Herrick  
RV: p Herrick  
Part.: BV:(11) p Barr  
RV: p Starrer  
Barred: BV:(9) p Hartwell

BB Standard: na  
RB Standard: na

## E-MAIL ANYONE

Karl Rau  
Beth Adams  
Donna Lamb  
Dennis Wollard  
Bob Hawes  
Don Erickson  
Erika Ray  
Thomas Roebuck  
Brian Shamblin  
Jeff Andrews  
Steve Johnson  
Christine Stowers

South China, ME  
Hobart, NY  
Groveland, MA  
Carencro, La  
Hampden, ME  
Eau Claire, WI  
Santa Maria, CA  
Marines via NY  
Cleveland, TN  
Westerville, OH  
Godfrey, IL  
Westfield, IA

krau@pivot.net  
BethAdams@compuserve.com  
lamb@psicorp.com  
dlw4615@usl.edu  
rohawes@maine.maine.edu  
DeeBadger@aol.com  
R1OKIE@aol.com  
troebuck@wcc.net  
BSbulwer@aol.com  
JAndr97965@aol.com  
SDJOHNSON@prodigy.net  
FSLZ79A@prodigy.com



**COCHINS INTERNATIONAL**

- President:** Pat Lacey  
 W5055 US HWY 10  
 Neillsville, WI 54456  
 [715] 743-4799
- Vice President:** Tim Hooker  
 3667 State Line Rd.  
 Poplar Grove, IL 61016  
 [815] 292-3260
- Newsletter/Points:** Karl F. Rau  
 RR2 Box 3350  
 South China, Maine 04358  
 [207] 445-2315
- Directory:** Jeff Ryan  
 19 Hyde Rd.  
 Gray, Maine 04039  
 [207] 657-3606
- Membership Chairman:** Dennis Wollard  
 1913 Beau Bassin Rd.  
 Carencro, LA 70520
- Directory NorthCentral:** Brian K. Justice  
 33841 Hysell Run Rd.  
 Pomeroy, Ohio 45769  
 [614] 992-2927
- Southeast:** Otes Ray  
 315 Pearson St.  
 Blackburg, SC 29702  
 [864] 839-4508
- International:** Bernice MacLaren  
 RR4 Stephens Bay  
 Bracebridge, ONT P1L1X2  
 [705] 645-8163
- WestCentral:** Mark Peterson  
 P.O. Box 386  
 Amboy, MN 56010  
 [507] 674-3286
- Northeast 1:** Bob Hawes  
 8 Short Wharf Rd.  
 Hampden, ME 04444  
 [207] 862-4189
- Northeast 2:** Peter Luca  
 219 E. Saddle River Rd.  
 Saddle River, NJ 07458
- Southwest:** Wayne Melancon  
 208 Durocher St.  
 Thibodaux, LA 70301
- Pacific:** Bob Anderson  
 2691 SW Elk Rd.  
 West Linn, OR 97068  
 [503] 638-8705

**COCHINS INTERNATIONAL  
 BANTAM & STANDARD**



**MEMBERSHIP CHAIRMAN**

**DENNIS WOLLARD  
 1913 BEAU BASSIN RD.  
 CARENCRO, LA 70520**

MEMBERSHIP IN COCHINS INTERNATIONAL RUNS FROM JANUARY 1 TO DECEMBER 31 OF EACH YEAR. DUES ARE \$15.00/FAMILY, \$10.00/SINGLE, AND \$7.50/JUNIOR (UNDER 18 YEARS). PAYMENT MUST BE IN U.S. CURRENCY.

NAME \_\_\_\_\_  
 STREET \_\_\_\_\_  
 CITY \_\_\_\_\_  
 PHONE \_\_\_\_\_  
 SIZE AND VARIETY OF COCHINS YOU RAISE: \_\_\_\_\_  
 MAIL TO: DENNIS WOLLARD/MEMBERSHIP CHAIRMAN, 1913 BEAU BASSIN RD.  
 CARENCRO, LA 70520

**COCHINS INTERNATIONAL  
 MEMBERSHIP APPLICATION**

## OBJECTIVES

To encourage the breeding, exhibiting and selling of pure bred cochins.

To create a cooperative felling among cochin breeders of both standards and bantams so as to get better acquainted.

To sponsor Regional, District and National Meets as to build up a greater fancy.

To assemble and distribute information on the breeding, exhibiting and care of cochin bantams and standards.

## GOVERNANCE

Policy set by Board representing all of the United States with 7 Directors and 1 International Director.

President, vice-president and directors are elected for one year term. They in turn appoint a secretary-treasurer to carry out established policy.

## MEMBERSHIP

Membership runs from January 1 to December 31 of each year. Dues are \$15.00/Family, \$10.00/Single, and \$7.50/Junior (Under 18 Years of Age) Payment must be in U.S. currency.

Single and Junior Membership receives the latest available Cochins Breeders Directory, Newsletter three times a year, eligibility for Awards at all Club Meets and entry into Master Breeders Program.

Family Membership- Entitles each family member to compete for Awards at District and National Meets. Newsletter 3 times a year, Cochin Breeders Directory and 1 entry into the Master Breeder Program.



## MASTER BREEDERS PROGRAMS

Master Breeders Program identifies and honors outstanding exhibitors with a Merit Award, given for the first one hundred points in any variety.

Upon achieving 500 points in no less than five years the exhibitor earns the title Master Breeder.

Points are rewarded in the following manner.

### REGIONAL MEET

ONE POINT for every FIVE BIRDS shown for BEST and RESERVE BREED.

ONE POINT for every FIVE BIRDS shown for BEST and RESERVE VARIETY.

ONE POINT for every FIVE BIRDS shown for OVERALL CHAMPION.

[Must Be 5 Standard & 5 Bantam Shown]

### DISTRICT & NATIONAL MEETS

ONE POINT for every FIVE BIRDS shown for BEST and RESERVE BREED.

ONE POINT for every FIVE BIRDS shown for BEST and RESERVE VARIETY.

ONE POINT for every FIVE BIRDS shown for OVERALL CHAMPION.

[Must Be 5 Standard & 5 Bantam Shown]

DISTRICT MEETS are eligible for following AWARDS, PROVIDING there are 50 or more BIRDS and 2 or more MEMBERS COMPETING.

NATIONAL MEETS are ELIGIBLE for following AWARDS, PROVIDING there are 100 or more BIRDS and 4 or more MEMBERS COMPETING.

LARGE PLAQUE for CHAMPION and RESERVE CHAMPION COCHIN OVERALL.

SMALL PLAQUE for BEST and RESERVE CHAMPION COCHIN. LARGE & BANTAM

SMALL PLAQUE for BEST and RESERVE of VARIETY.

SMALL PLAQUE for CHAMPION DISPLAY.

### JUNIOR MEMBERS

JUNIOR / UNDER 18 YEARS of age: SMALL PLAQUE for BEST and RESERVE COCHIN shown PROVIDING there are 20 or more BIRDS and 2 or more MEMBERS COMPETING.

TO earn MASTER BREEDER POINTS entries must be in OPEN CLASS.

### NOTE

AWARDS OFFERED by THE COCHINS INTERNATIONAL CLUB will be issued ONLY TO persons that are MEMBERS in good standing PRIOR to JUDGING.