



COCHINS International

Bantam & Standard

ESTABLISHED

COCHIN NEWS



EDITOR: PAT LACEY

VOLUME 7 APRIL 1995

PRESIDENT'S MESSAGE

THIS IS ALWAYS MY VERY FAVORITE TIME OF YEAR. I LOVE CHICKS. I WAS FORTUNATE AND HATCHED MORE CHICKS THAN I EVER HAVE. IN THE BEGINNING I GREW TO DISLIKE THE POWER COMPANY. ON A COLD WINTER DAY IN WISCONSIN WITH 2 BATCHES STARTED IN THE INCUBATOR, THEY LET THEIR POWER GO OFF. ONE BATCH WAS 2 WEEKS OLD, THE OTHER 1 WEEK. THE POWER WENT OFF AT 2 IN THE AFTERNOON AND DID NOT COME BACK ON UNTIL 10:30 THAT NIGHT. A BREEDER'S WORST NIGHTMARE. THE TEMPERATURE IN THE INCUBATOR WENT DOWN TO 61. UPON REACHING REACHING FULL TERM I HAD A 50% HATCH ON EACH BATCH, WHICH I THOUGHT WAS PRETTY GOOD!

OUR NEW DIRECTORS ARE HARD AT IT PLACING MANY MEETS. THE FEW I HAVE TALKED TO HAVE AS MANY AS 14 PLACED IN THEIR DISTRICTS.

THANKS TO ALL OF YOU WHO VOTED AND SHOWED SUPPORT FOR YOU CLUB AND THE INDIVIDUALS TAKING ON THE RESPONSIBILITY OF IT'S OPERATION.

WE HOPE YOU ALL ENJOYED YOUR BREEDERS DIRECTORY. JEFF RYAN DID AND EXCELLENT. WHEN WE CREATE THE NEXT DIRECTORY WE NEED TO STRIVE TO HAVE AS MUCH INFORMATION AS POSSIBLE ON VARIETIES, SELL/SHIP, AND AVAILABILITY.

THE NATIONALS HAVE BEEN PLACED FOR 1995. BIDS WILL BE TAKEN FOR 1996 UNTIL JULY 31. PLEASE DIRECTS THESE BIDS TO ME PAT LACEY W5055 US HWY 10 NEILLSVILLE, WI 54456. THESE BIDS WILL BE VOTED UPON BY OUR DIRECTORS FOR PLACEMENT. THE DISTRICTS IN LINE TO BID ARE: PACIFIC REGION AND NORTH CENTRAL.

OUR DIRECTORS WERE POLLED ON TWO ITEMS FOR CONSIDERATION FOR PRESENTATION TO THE MEMBERSHIP IN THE FORM OF A REFERENDUM. THESE REFERENDUMS WILL BE A PART OF OUR FALL ELECTION BALLOT.

#1 BIDDING FOR NATIONALS

WE WOULD LIKE TO MODIFY OUR BIDDING ON NATIONALS. IN SOME OF THE ROTATIONS WE HAVE TROUBLE GETTING SHOWS TO BID. WE RECOMMEND THAT WE ADHERE TO THE ROTATIONAL UNTIL JULY 31. IF NO BIDS HAVE BEEN RECEIVED, THE BIDDING BECOMES OPEN TO ALL SHOWS ON THE SIDE OF THE MISSISSIPPI THAT THAT DISTRICT IS IN. DIRECTOR VOTES-UNANIMOUS.

#2 SPLITTING THE NORTHEAST

THE NORTHEAST WOULD LIKE TO DIVIDE INTO TWO DISTRICTS, WITH 2 DIRECTORS AND 2 DISTRICT MEETS. THE VOTING WAS ALITTLE MORE DIVIDED. 5 DIRECTORS VOTED FOR, 4 DIRECTORS VOTED AGAINST, 1 ABSTENTIO FOR FURTHER STUDY. IT WAS POINTED OUT THAT THE SQUARE MILES OF THESE 13 STATES IS 246,378 LESS THAN THE STATE OF TEXAS. THE SOUTHWEST DISTRICT OCCUPIES 815,360 SQUARE MILES. DENNIS WOLLARD IN A PAST MEMBERSHIP STUDY POINTED OUT THAT 27% OF OUR MEMBERSHIP RESIDES IN THE NORTHEAST, FOLLOWED BY 26% IN THE NORTH CENTRAL I THINK THIS DECISION WARRENTS FURTHER STUDY. MY ONLY CONCERN IS THE ROTATION OF THE EASTERN NATIONAL, WHICH WOULD INCREASE FROM 3 TO 4 YEARS. LET'S HEAR FROM THE MEMBERSHIP AND SEE WHAT OTHERS OF YOU FEEL PRIOR TO PUTTING IT ON THE FALL BALLOT

PLEASE CHECK YOUR MAILING LABEL TO SEE IF YOUR MEMBERSHIP IS CURRENT. OUR MEMBERSHIPS RUN FROM JANUARY TO JANUARY, EVEN IF YOU JOIN IN THE MIDDLE OF THE YEAR, TO PARTICIPATE IN A COCHIN INTERNATIONAL MEET. THESE ARE THE ONLY MONIES ON WHICH WE OPERATE. IF YOU ARE NOT PAID WE CAN NOT CONTINUE TO PROVIDE YOU WITH NEWSLETTERS, OR AWARDS.

PATCHES PATCHES PATCHES. WE STILL HAVE PATCHES. YOU MAY WANT TO CONSIDER PURCHASING PATCHES TO USE A AWARDS AT YOUR LOCAL SHOWS. THEY ARE AVAILABLE FROM ME AT A COST OF \$5.00 EACH. (THEY COULD EASILY BE USED AS VARITEY AWARDS.)

HOPE TO SEE MANY OF YOU AT THE POULTRY SHOWS. KEEP YOUR COMMENTS AND LETTERS COMING.

PAT LACEY PRESIDENT

**We want to hear
from you!**

VICE PRESIDENT

THANKS TO OUR NEW LEADERS...PAT LACEY, DENNIS WOLLARD, PETER LUCA, RICHARD SISSON, TIM HOOKER, WAYNE MELANCON, MARK PETERSON, BOB ANDERSON, BERNICE MACLAREN, BARB LEGRAND AND JEFF RYAN, FOR ACCEPTING EITHER NEW DUTIES OR BEING REINSTATED AGAIN. THIS IS HOW CLUBS BUILD AND WORK LOADS ARE MADE EASIER. TO THE OUT GOING PERSONNEL; SCOTT ADAMS, LUTHER VINES, BILL BRUNSCHON, DON & SUE RUTHERFORD, DICK & THOLA WALDAU AND BUT NOT LEAST CRAIG CARROLL (WHO IS STILL ON OUR BOARD OF DIRECTORS AS PAST PRESIDENT) THANKS FOR HELPING TO GET US STARTED. WE ARE NOW MOVING AHEAD. STILL A LITTLE BUMPY BUT MOVING.

I AM PUTTING THIS PROPOSAL OUT TO OUR BOARD OF DIRECTORS TO VOTE ON SPLITTING THE NORTH EAST DISTRICT INTO 2 DISTRICTS. ONE CALLED THE "NORTHERN DISTRICT", CONSISTING OF STATES CONNECTICUT, MAINE, MASS., NEW HAMPSHIRE, RHODE ISLAND, VERMONT AND NEW JERSEY. THE OTHER CALLED THE "NORTHEAST DISTRICT" CONSISTING OF STATES VIRGINIA, WEST VIRGINIA, MARYLAND, DELAWARE, PENNSYLVANIA AND NEW YORK. WE AT OUR NATIONAL FEEL THAT WITH 13 STATES AND BEING CLOSED IN IS NOT FEAR FOR TRAVELING PURPOSES. NO ONE TRAVELS AT GREAT DISTANCES, HARDLY AND MAINE TO VIRGINIA IS A FAR SPREAD. LOOKING AT A MAP THE NEW ENGLAND STATES ARE CUT OFF FOR TRAVEL. WE WOULD LIKE A DISTRICT SHOW IN EACH DISTRICT AND ALSO HAVE ANOTHER DISTRICT DIRECTOR.

THAT'S ALL FOR NOW. REMEMBER...YOU'RE PART OF A FAMILY NOW!

ELTON MINNICH VICE PRESIDENT

NO KIDDING

Laying eggs

- Penguin — lays one egg per year
- Oyster — 500 million eggs per year
- Hummingbird — two eggs per year
- Sturgeon — 7 million eggs per year
- California Condor — one egg every two years
- Queen termite — 30,000 eggs daily

Source: World Features Syndicate
©1994 World Features Syndicate.

AND I MIGHT ADD...YOUR PRIZE HEN..1 EGG PER MONTH

"Feather Fancier" 50th Anniversary Show & 1995 Oxford Poultry, Pigeon & Pet Stock Association Show

★★★★★

COCHIN INTERNATIONAL REGIONAL MEET

(Authorized by Canadian District Director, Bernice MacLaren, R.R.4, Bracebridge, Ontario)

"Feather Fancier" Offers:

\$10 in Cash, Special White Cochin Ceramic Coookie Jar & Rosette for the Champion Cochin Overall (Standards & Bantams).

To be eligible for this award, winner must be a current member of the Cochin International. For membership contact:

Bernice MacLaren, R.R.4, Bracebridge, Ontario P1L 1X2
Phone (705) 645-8163

★★★★★



Two well-known fanciers with their prize birds! Don Richardson (left) of Orangeville, Ont. proudly holds his Black Rosecomb bantam male which was picked Best Rose Combed Clean Leg Bantam in the show, while Orville Shewfelt of Kincardine also displays his Black Cochin bantam hen which was judged Champion Cochin Overall in the Show. The Cochin International held their meet here, with an impressive display of both large and bantam Cochins.

Expenditures Revenues

| | | | |
|----------|----------------------|----------|-----------|
| 9/10/94 | ck #114 PRESS AD | \$40.00 | \$1434.60 |
| 10/5/94 | DEPOSIT | \$135.00 | 1569.60 |
| 10/13/94 | DEPOSIT | 15.00 | 1584.60 |
| 11/7/94 | ck#115 MINNICH POST. | 26.75 | 1557.85 |
| 11/21/94 | DEPOSIT | 192.50 | 1750.35 |
| 12/20/94 | DEPOSIT | 168.75 | 1919.10 |
| 12/29/94 | ck #116 LACEY POST. | 15.23 | 1903.87 |
| 12/30/94 | ck#117 WOLLARD POST. | 30.56 | 1873.31 |
| 12/30/94 | DEPOSIT | 175.00 | 2048.31 |
| 1/10/95 | DEPOSIT | 180.00 | 2228.31 |
| 2/1/95 | DEPOSIT | 207.50 | 2435.81 |
| 2/22/95 | ck#119 LACEY POST. | 6.98 | 2428.83 |
| 2/27/95 | ck#118 CARROLL NEWS. | 369.25 | 2059.58 |
| 3/2/95 | DEPOSIT | 150.00 | 2209.58 |
| 3/27/95 | ck# 121 ABA | 18.00 | 2191.58 |
| 3/29/95 | DEPOSIT | 150.00 | 2341.58 |
| 3/29/95 | ck#120 APA | 10.00 | 2331.58 |
| 3/31/95 | ck#124 WOLLARD POST | 32.00 | 2299.58 |

CHECK CARROLL BREEDERS DIRCT. 264.66 2034.92

INCLUDED IN THE DEPOSITS WAS A CHECK FOR \$33.75 RECEIVED FROM THE YORK SHOW AS A 25¢ REBATE ON BIRDS SHOWN AT THEIR 94 CI NATIONAL MEET.

YOUR OPINION COUNTS

FROM MEMBER DIANE COLEGROVE

I WOULD LIKE TO WISH YOU THE BEST OF LUCK WITH THE COCHIN INTERNATIONAL ELECTIONS. YOU HAVE MY VOTE. (ANY PERSON WHO IS SO DEDICATED AND PASSONATE FOR THE FANCY WILL BE ABLE TO PROMOTE AND ENCOURAGE THOSE OF US WHO ARE NEWCOMERS AND SET HIGH STANDARDS FOR CONTINUAL IMPROVEMENT). ALSO, THE FACT THAT YOU CARED ENOUGH ABOUT YOUR OLD COCK BIRD "BILL", TO BURY HIM APPROPRIATELY.

I REGRET SEEING MR. CARROLL GO, BUT UNDER STAND HOW MUCH TIME AN ORGANIZATION CAN TAKE AWAY FROM A PERSONS FAMILY LIFE. MR CARROLL HAS HELPED AND ADVISED MANY OF THE COCHIN BREEDERS IN OUR DISTRICT INCLUDING MYSELF. I'M SURE I SPEAK FOR ALL OF US WHEN I SAY THANK YOU.

AS FOR MYSELF I AM JUST A BEGINNER AND ALTHOUGH I SHOW MY BIRDS AT LOCAL FAIRS, I'M STILL JUST A SPECTATOR AT THE SHOWS. PERHAPS NEXT YEAR AT THE "WISCONSIN INTERNATIONAL" I'LL HAVE A COCHIN OR TWO TO ENTER. (I'M TRYING TO DEVELOPE SOME DECENT RED COCHINS AND HAVE BEEN IN CONTACT WITH SEVERAL BREEDERS ACROSS THE NORTHEAST IN HOPES OF CREATING A NETWORK ON THIS FAIRLY NEW VARIETY) IF YOU HAVE ANY IDEAS OR INFORMATION TO HELP US OUT, WE'D CERTAINLY BE GRATEFUL.

THERE IS ONE LAST THING I WOULD LIKE TO SAY BEFORE I SIGN OFF...A COUPLE OF YEARS AGO WE HAD A BRIEF CONVERSATION WHILE AT THE "WISCONSIN INTERNATIONAL" YOU TOLD ME THAT YOU ENJOYED ALL ASPECTS OF RAISING YOU COCHINS...INCLUDING CLEANING THE COOPS AND SHOVELING POOP. I MUST ADMIT THAT I THOUGHT YOU WERE A BIT OFF YOUR ROCKER. I NOW APOLOGIZE FOR THAT THOUGHT. SINCE THEN I HAVE COME TO REALIZE SUCH PRIDE IN MY OWN COOP, AND THE SATISFACTION THAT COMES WITH HAVING A CLEAN COOP AND HEALTHY BIRDS.

THANKS DIANE FOR YOUR LETTER. CAN ANYONE HELP WITH RED COCHINS?

*Something
To Crow About*

PROUDLY PRESENT

FROM DIRECTOR BOB ANDERSON

AS I LOOK THROUGH THE MOST RECENT NEWS-LETTER I SEE THAT YOU HAVE SOME BIO INFORMATION ABOUT ALL OF THE NEW DIRECTORS EXCEPT MYSELF. THEREFORE, I THOUGHT YOU MIGHT LIKE SOME INFORMATION ABOUT ME. (YOU BET BOB!) I AM EMPLOYED IN ADMINISTRATION FOR THE CITY OF PORTLAND, BUREAU OF BUILDING. I HAVE A BACHELORS DEGREE IN BUSINESS ADMININISTATION AND HUMAN RESOURCE MANAGEMENT FROM PORTLAND STATE UNIVERSITY (1993), AND AM WORKING ON A MASTERS DEGREE IN PUBLIC ADMINISTRATION (HUMAN RESOURCE EMPHASIS) AT LEWIS & CLARK COLLEGE, PORTLAND OR. AT AGE 26, I HAVE BEEN RAISING CHICKENS FOR 16 YEARS. I STARTED RAISING BLACK COCHIN STANDARDS EXCLUSIVELY IN 1984, AND HAVE SINCE ADDED BLUE & BUFF, WITH SOME EXPERIMENTAL MATINGS IN OTHER COLORS. I AM CURRENTLY THE SHOW SECRETARY FOR THE P.N.P.A.'S TWO SHOWS.

THANKS BOB. I ALWAYS THINK IT IS NEAT HOW RAISING COCHINS ATTRACTS FOLKS FROM SO MANY DIFFERENT WALKS OF LIFE.

Formulas for success

FROM MEMBER JOHN LASLEY

I HAVE AN IDEA THAT I HAVE BEEN KICKING AROUND AND WOULD LIKE TO SHARE IT WITH THE MEMBERSHIP. WHY DOESN'T THE CLUB WORK ON PRINTING A NEW BOOK ON COCHINS? THE OLD "COCHIN BANTAM" BOOK IS ABOUT 50 YEARS OLD NOW AND A LOT OF THE MANAGEMENT PRACTICES NEED TO BE UPDATED AS WELL AS DISCUSSING ALL OF THE VARIETIES AND TELLING HOW TO BREED THEM. I FEEL A NEW UPDATED BOOK WOULD GO A LONG WAY IN HELPING THE NEW BREEDER LIKE MYSELF AND PROMOTE COCHINS.

THANKS JOHN. I AGREE. NOW MORE THAN EVER WE HAVE PEOPLE SUCCESSFULLY BREEDING MANY OF THE COLORS AND FEATHER PATTERNS. LETS GET SOME INPUT FROM THE MEMBERS. LET'S GET OUR MEMBERS TO WRITE ARTICLES (EVEN IF WE HAD MORE THAN 1 FOR EACH COLOR), COMPILE IT INTO A BOOKLET LIKE OUR DIRECTORY AND SELL IT AS A FUND RAISER!!!! ANYONE WANT TO VOLUNTEER FOR THIS PROJECT?

Artificial Insemination of Poultry

John L. Skinner and Louis C. Arrington



North Central Regional
Extension Publication #216

Sponsored by the Extension Services of Illinois, Indiana, Iowa, Kansas, Missouri, North Dakota, Ohio, and Wisconsin. In cooperation with ES-USDA.

This publication is offered as a guide for poultry hobbyists, aviculturists and others who breed ornamental fowl and want to use techniques commercial poultry breeders, particularly those in the turkey industry, have perfected to improve fertility.

When to Use Artificial Insemination

Chicken breeders may be disappointed when their better birds fail to reproduce. The birds may not mate because of shyness, physical limitations, lack of interest or social incompatibility. Unsatisfactory nutrition, age of breeders, management conditions, egg collection and holding practices, and incubation procedures can also influence reproduction.

If birds do not reproduce when other conditions are adequate, artificial insemination may be the answer. It is relatively simple and can be used for many kinds of birds, but it requires practice and the proper equipment. It cannot, however, overcome poor management practices, poor health, genetic lethals or differences; nor will it halt early embryonic deaths.

Artificial insemination is more an art than a science. The procedure is not highly technical, but basic knowledge and appreciation of the bird's anatomy is necessary. Success depends largely on the patience and skill of the inseminator. Wild-bird and waterfowl breeders should practice first with some common poultry type; Cornish bantams would be an excellent choice.

Equipment Needed

Artificial insemination equipment is simple. Figure 1 shows tools most often used when inseminating a small number of birds.



Figure 1. These simple tools—glass eye cup, medicine dropper, 1 cc plastic syringe and glass rod—are all that is needed for artificial insemination of poultry and other birds if an assistant is present.

The Male

For best results, the male used for artificial insemination:

1. Must be mature, healthy and physically normal.
2. Must be sexually active. This is especially important in birds that have a limited season. Light stimulation may be used to control the season in some varieties.
3. Must be tame, or at least not terrified when restrained or handled.
4. Should be free from external parasites. Some parasites irritate the vent area, making male organ exposure difficult and painful to the bird.
5. Should be kept apart from, but preferably in sight of, females.
6. Should not be subjected to extreme temperatures or allowed to become overheated.



Figure 3. Note position of the operator's right hand. The white area between the thumb and forefinger is semen flowing from this male chicken.

The Female

For best results, the female used in artificial insemination:

1. Must be in production, or she may be injured.
2. Must not have a hard-shelled egg in the lower part of her oviduct, so the sperm can move easily to the area where it unites with the ova.

Procedure (Male)

Experts have developed several ways to hold males for semen collection. Techniques may require one or two persons. The following two-operator method works well and reduces fright or feather damage to the bird.

Hold the male with his head toward the operator and with the keel lying in the palm of the left hand. Secure the right leg between the first and second fingers. To make larger birds more comfortable, hold the left leg between the second and third fingers. Stroke the back from midpoint toward the tail with the right hand, massaging the abdomen from below with the fingers of the left hand. After several vigorous strokes, transfer the right hand from the back to a position where the thumb and forefinger can apply pressure to either side of the vent. Simultaneously, apply pressure to the abdomen with the fingers of the left hand. This normally extends the copulatory organ and causes a flow of semen, as shown in Figure 3. A slight milking action may increase semen flow. An assistant should catch the semen in an eye cup or other small smooth-edged vessel. In some instances, especially with waterfowl, the copulatory organ may not extend completely. Semen collection is still possible, however, as it flows over the surface of the partially everted vent.

Points to Remember

- Stimulate males and collect semen immediately after catching. Holding a male, even a tame one, for only a few minutes may interfere with collection.
- Successful semen collection usually results from an experienced operator and an experienced subject.
- First attempts at "working" inexperienced males often produce unsatisfactory results. Some males pass feces or urates as they discharge semen. Try to collect only semen; contaminated semen usually produces poor results. Withhold water and feed four to six hours before collection to lessen chances for contamination.

- The volume of semen discharged varies from bird to bird. Most males produce between 0.1 cc and 0.44 cc during each successful collection.
- Individual males vary considerably in time needed to replenish their semen supply. Normally, however you can collect semen every two to four days without harming the birds.
- Use the semen as soon as possible. It can be held one or two hours without great loss in fertilizing capacity, or longer under controlled conditions. Don't allow the semen to dehydrate and keep it below the body temperature of the male that produced it.

Procedure (Female)

When handling and exposing the female, remember the hen is delicate and must be treated gently. Hold and stimulate her in much the same way as the male. As the operator applies pressure after the preliminary stroking and massage, the vent everts and an orifice appears on the left side. It may be a round rosette or a cleft or skin overfold. This orifice, shown in Figure 4 is the oviduct's terminal opening. An assistant should place the semen 1/4 to 1 inch deep into this opening with a 1 cc syringe, a medicine dropper or similar device.

When making individual mating—one male with one female—use the entire semen collection. Various studies show, however, that good results can be achieved with as little as .05 cc of semen per insemination.

Relax pressure on the female's body as soon as possible after insemination so the oviduct can return to its normal position, drawing the semen inward.



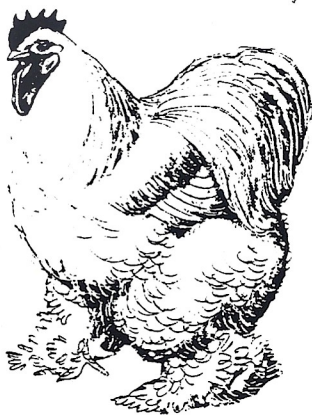
Figure 4. Note position of hands and the exposed terminal end of the oviduct of this female chicken.

Points to Remember

- How often insemination is needed for satisfactory results varies somewhat among females. It may be best to inseminate more often at the onset of production, but once some eggs have been fertilized once-a-week insemination is enough to maintain satisfactory level.
- Fertile eggs can normally be obtained 48 to 96 hours after insemination and up to three weeks thereafter. The percentage of fertile eggs from a flock begins to drop between five and seven days and usually will be unsatisfactory beyond 10 days.
- Turkeys remain fertile longer than some other Geese show considerable individual variation.

When to Consider Artificial Insemination

1. To breed from birds of extreme body conformation, for example those with very broad bodies and/or short legs—conditions which hinder natural mating. The Cornish is an example of this type of bird.
2. To breed from birds with a lot of loose feathering so you won't have to trim the feathers, e.g. Cochins.



3. To breed from injured birds, for example those whose toes have been frozen or wings or legs broken, etc.
4. To breed from older males when stiffened joints and other maladies of advanced age prevent natural mating.
5. To make better use of equipment. For example, with this method you can use one pen of females and one pen of males to secure several different mating combinations. You can also carry over unused males rather than having one pen for each mating.
6. To mate incompatible individuals.
7. One male can fertilize more females than with natural mating.
8. You can initiate fertility in several females at the same time. With natural mating, certain females may be unattended for several days.
9. Prevents over-active males from abusing females.
10. Prevents certain males from ignoring some females, as often happens under conditions of natural mating.

What's New?

FROM DIRECTOR WAYNE MELANCON

GREETINGS FROM LOUISIANA! AS YOUR NEW DISTRICT DIRECTOR, I WOULD LIKE TO THANK EVERYONE FOR THE VOTE OF SUPPORT. PLEASE FEEL FREE TO WRITE ME IF I CAN HELP YOU IN ANY WAY. YOUR REQUESTS FOR MEETS SHOULD BE MAILED TO ME AND WILL BE PROCESSED PROMPTLY. SEND TO WAYNE MELANCON 208 DUROCHER ST THIBODAU, LA. 70301

WITH 1995 HERE, WE SHOULD ALL BE LOOKING TO MAKE IT A BANNER YEAR FOR OUR BREED AND OUR CLUB. WORD OF MOUTH IS STILL THE BEST WAY TO SPREAD THE NEWS THAT THE COCHIN INTERNATIONAL IS A CLUB ON THE MOVE. IF EVERYONE BROUGHT IN JUST ONE NEW MEMBER THIS YEAR, THE STRENGTH OF OUR CLUB WOULD DOUBLE BY 1996.

MY HAT GOES OFF TO THE FINE PEOPLE OF TEXAS FOR THE RECENT FORMATION OF THE LONE STAR COCHIN CLUB. TEXAS HAS BEEN THE BREEDING GROUND OF SOME WORLD CLASS COCHINS. NAMES LIKE ED TURPIN AND DELLA GEER WILL ALWAYS BE REMEMBERED IN THIS PART OF THE COUNTRY. SUPPORT FOR OUR BREED AT THE LOCAL AND STATE LEVEL ARE SO IMPORTANT. THE ONE STATEMENT I MAKE TO THIS CLUB IS TO SUPPORT THE COCHINS AT A NATIONAL LEVEL AND URGE YOUR MEMBERS TO JOIN COCHINS INTERNATIONAL. THERE IS STRENGTH IN NUMBERS AND TOGETHER WE CAN DO SO MUCH MORE.

I WOULD ALSO LIKE FOR PEOPLE IN THIS DISTRICT TO WRITE AND KEEP ME INFORMED OF WHAT IS GOING ON WITH COCHINS IN OUR DISTRICT FOR A REGULAR COLUMN IN THE NEWSLETTER. YOU WOULD BE SURPRISED AT WHAT SEEMS UNIMPORTANT TO YOU MIGHT INTEREST SOMEONE ELSE. THINGS LIKE A CERTAIN SHOW THAT HAS INCREASED IT'S COCHIN ENTRIES IN A FEW YEARS OR YOU MAY KNOW OF A JR. EXHIBITOR WHO IS DOING SOMETHING POSITIVE WITH COCHINS AND SHOULD BE RECOGNIZED. EVEN A REPORT ON GOOD FERTILITY IN HATCHERS MAY INTEREST SOMEONE. SO YOU SEE, NO INFORMATION IS UNIMPORTANT!

AS FAR AS GOINGS ON IN LOUISIANA, WHEN I REFLECT ON 1994, TWO THINGS COME TO MIND. THE FIRST IS THE LOSS OF A GREAT LADY IN COCHIN BANTAMS. CLAIR HICKS WAS A SUPPORTER OF COCHIN AND POLISH BANTAMS WAY BEFORE MY 40 YRS OF LIFE. SHE WILL BE MISSED BY ALL WHO KNOW HER. THE SECOND THING IS THAT WE MADE A BID FOR A NATIONAL HERE IN LOUISIANA. I PROMISE A GOOD TIME FOR ALL WHO ATTEND.

WELL, THAT'S ALL FOR NOW. KEEP RAISING, SHOWING AND TALKING COCHINS AND I HOPE YOU ALL FIND A CHAMPION AMONG THOSE YOUNG BIRDS.

“Thumbs Up!”

MASTER BREEDER

MASTER BREEDER POINTS TO JAN. 31, 1995
(* NOT ENOUGH BIRDS SHOWN TO EARN POINTS)

| BREEDER | COLOR | POINTS | BREEDER | COLOR | POINTS | BREEDER | COLOR | POINTS |
|--------------------|---------------|--------|---------------------|---------------|--------|-----------------------|-------------|--------|
| ANDERSON, BOB | LF BLACK | 56 | HAFEC, SCOTT(FAM) | BTM BARREDD | 0* | MC CAMMON, MATT | BTM MOTTLED | 2 |
| | BLUE | 1 | | BIRCHEN | 0* | MARSINKO, ANDREW | LF BUFF | 22 |
| | BROWN RED | 0* | | BROWN RED | 0* | | SPLASH | 5* |
| | BUFF | 30 | | BUFF COLUM. | 0* | MAZUR, JOE | BTM BLACK | 12 |
| | SILVER LACE | 0* | | GOLD LACE | 0* | | FRIZZLE | 1 |
| ANDERSON, CHARLES | BT BARRED | 0* | | PARTRIDGE | 0* | | WHITE | 2 |
| | BLACK | 63 | | SILVER LACE | 0* | MELANCON, W&J | BTM BLACK | 4 |
| | BLUE | 1 | | LF BLACK | 0* | MATTS, JAMIE | BTM BLACK | 22 |
| | BROWN RED | 4 | HALL, LINDSAY | BTM BLACK | 10 | | BLUE | 0* |
| | WHITE | 19 | HAWES, ROBERT | BTM BLUE | 4 | | BUFF | 1 |
| ANDREWS, KATIE | LF BLACK | 2 | | BUFF | 45 | | MOTTLED | 0* |
| ARMSTRONG, A.M. | LF BUFF | 28 | HELVEY, BRYANT | BTM BUFF | 2 | | PARTRIDGE | 0* |
| | BTM BLACK | 45 | HENDERSON, JOHN | BTM BLACK | 6 | | SPLASH | 0* |
| | BUFF | 3 | | WHITE | 10 | MICKEY, FRANK | LF BLACK | 14 |
| | WHITE | 43 | HERTLING FAMILY | BTM BLACK | 6 | MILLER, DARRELL | BTM BLUE | 1 |
| B&B BANTIE BARN | BTM BARRED | 0* | | WHITE | 16 | | PARTRIDGE | 6 |
| BARNHOUSE W&N | BTM BLACK | 77 | HICKEY, RAY | BTM BLACK | 52 | MILLER F&J | LF BLACK | 0* |
| | MOTTLED | 2 | | WHITE | 91 | | BLUE | 1 |
| BECKER, MIKE | BTM BLACK | 49 | | LF BLACK | 6 | | BUFF | 0* |
| | BUFF | 8 | | WHITE | 4 | | WHITE | 0* |
| | WHITE | 21 | HOLT, DONALD | BTM BUFF | 3 | MILLER, HAROLD | BTM BARRED | 2 |
| BEST, E&M | BTM WHITE | 26 | HOOKER, TIM | BTM BLACK | 61 | | BLUE | 2 |
| BOLTON, JAN | BTM WHITE | 38 | | WHITE | 15 | | BUFF | 2 |
| BRAND, PHILLIP | BTM BLACK | 54 | HUGHES, E&J | BTM WHITE | 8 | MILLER, TOMMY&W | BTM BLACK | 28 |
| BROWN, DAN(FAM) | BTM BLACK | 6JR | ISLER, SANDY | BTM BARRED | 1 | | WHITE | 2 |
| | FRIZZLE | 0*JR | | BLUE | 33 | MINNICH'S COOP | BTM BUFF | 4 |
| | WHITE | 4 JR | | BTM BLUE | 2 | | RED | 0* |
| | BLACK | 38 | | PARTRIDGE | 0* | | LF BIRCHEN | 0* |
| | FRIZZLE | 0* | JOACHIMI, WILLARD | LF BLACK | 14 | | BLACK | 0* |
| | WHITE | 9 | JUSTICE, BRIAN | LF BUFF | 20 | | BLUE | 2 |
| BROWN, TIM | LF BUFF | 3 | KANTLEHNER L&C | LF BLACK | 8 | | MOTTLED | 3 |
| BUCELLA, PAUL(FAM) | BT BLACK | 0*JR | | FRIZZLE | 6 | | SPLASH | 0* |
| | WHITE | 3*JR | KOLACZ, KATHY | BTM BUFF | 2 | MOYER, TOMMY | BTM BLACK | 54 |
| | BTM BLACK | 8 | | PARTRIDGE | 1 | | BLUE | 11 |
| | FRIZZLE | 1 | KRAUSE FAMILY | BTM BLACK | 12 | MURRAY, KIMBERLY | BTM BLACK | 23 |
| | WHITE | 34 | | BLUE | 1 | | BUFF | 1 |
| | LF BLACK | 0* | | BUFF | 5 | | MOTTLED | 0* |
| CAMPBELL'S PARAD. | BT BLACK | 5 | | SILVER LACE | 1 | | SILVERLACE | 0* |
| | BLUE MOTTLE | 0* | KRUEGER, BILL | BTM BLUE | 8 | MUSSEC, WM | BTM WHITE | 3 |
| | FRIZZLE | 19 | | SPLASH | 0* | PETERSON L&M | BTM BLACK | 106 |
| | MOTTLED | 1 | | BTM BLACK | 24 | | BUFF | 20 |
| | WHITE | 4 | LACEY, PAT | WHITE | 276 | | LF BUFF | 55 |
| CARROLL, CRAIG | BTM BLACK | 311 | | GOLD LACE | 2 | RAU, KARL | BTM MOTTLED | 4 |
| | BLUE | 3 | LEGRAND, KEITH | BTM BLACK | 41 | | SILVER LACE | 0* |
| | BROWN RED | 23 | | WHITE | 219 | | WHITE | 20 |
| CIAMPA, FRED | BTM BUFF | 3 | LEWIS, JEFF(FAM) | BTM PARTRIDGE | 1 | RAR, NORMAN | BTM BLACK | 32 |
| COLLINS, JAMES | BTM BLACK | 7 | | LF BLUE | 1 | | BLUE | 27 |
| | WHITE | 141 | LHAMON, MATT | BTM BLUE | 11 | RAY, OTES | BTM BLACK | 78 |
| COSTA, KRISTI | BTM BIRCHEN | 0* | | PARTRIDGE | 3 | | WHITE | 27 |
| | BUFF | 2 | LIUEZEY, ANGELIQUE | BT BUFF | 0* | ROBINSON, BRUCE | BTM BIRCHEN | 0* |
| CURRENS, JIMMIE | BTM BLACK | 41 | | PARTRIDGE | 0* | | BLACK | 1 |
| | WHITE | 124 | LOU FRAN FARM | BTM BIRCHEN | 0* | | BLUE | 1 |
| D&D COCHINS | BTM BLACK | 1 | | PARTRIDGE | 2 | | COLUMBIAN | 0* |
| | WHITE | 13 | | LF BLACK | 8 | | FRIZZLE | 1 |
| | LF BLACK | 3 | | BLUE | 1 | | SILVERLACE | 0* |
| DIONNE, DALE | BTM BLACK | 13 | | FRIZZLE | 0* | | SPLASH | 0* |
| | MOTTLED | 23 | | GOLD LACE | 2 | | WHITE | 17 |
| DOEHRING, WM | BTM PARTRIDGE | 2 | | PARTRIDGE | 1 | RUTHERFORD, D&S | LF BLACK | 1 |
| DONAHUE, MIKE | BTM BIRCHEN | 1 | | WHITE | 0* | | BTM BLACK | 14 |
| | BLACK | 52 | LUCA, PETER | SILVER LACE | 0* | | WHITE | 18 |
| | BROWN RED | 32 | | BTM WHITE | 119 | | LF BLACK | 18 |
| | MOTTLED | 0* | | BLACK | 35 | | BLUE | 2 |
| DOTSON, KELLY | BTM WHITE | 5 | LYNINGER, TERRY | BTM RED | 0* | RYAN, JEFFERY | BTM BLACK | 3 |
| ESTLACK FAMILY | BTM BLACK | 39 | LYON, KRISTI | BTM WHITE | 12 | ST. AMOUR FAMILY | LF BLACK | 14 |
| FOX, KELLY | BTM BARRED | 1 | MAAS, HANS | BTM BLUE | 6 | | BLUE | 4 |
| GOODFELLOW, FRANK | BTM BUFF | 2 | MAC HARP FOULT. | BTM BLACK | 10 | | PARTRIDGE | 0* |
| | WHITE | 5 | | WHITE | 6 | | SPLASH | 1 |
| GRINER, MARTHA | BTM BLACK | 50 | | LF BLACK | 25 | SAXTON, BILL | BTM BLUE | 0* |
| HADLEY, WILLIS | BTM BLUE | 2 | | BUFF | 91 | SKIDMORE, TOM | BTM BLACK | 0* |
| | BLUE SPASH | 0* | | PARTRIDGE | 21 | | BLUE SPLASH | 0* |
| | | | | WHITE | 21 | | FRIZZLE | 35 |
| | | | MC ALLISTER, CLAUDE | BT BARRED | 0* | | MOTTLED | 3 |
| | | | | BLUE | 0* | SCHAAL, BRIAN | LF BUFF | 1 |
| | | | | BLUE MOTTLED | 0* | SCHMIDGALL, LORETTA B | FRIZZLE | 8 |
| | | | | COLUMBIAN | 0* | SCHROEDER, GEORGE | BTM BLACK | 110 |
| | | | | WHITE | 2 | SIMONS, FAMILY | LF WHITE | 0* |
| | | | | | | SISSON, RICHARD | BTM WHITE | 3 |
| | | | | | | SOUTHERTON, ROBERT | BT BUFF | 9 |
| | | | | | | STOCKMAN, PAUL | LF BLACK | 2 |
| | | | | | | | BLUE | 0* |
| | | | | | | THOMPSON, ED | BTM BUFF | 8 |

| | | | |
|----------------------|-----|---------------|-----|
| | | WHITE | 11 |
| TRUEDSON, DODDIE | BTM | BLACK | 2 |
| | | MOTTLED | 0* |
| | | WHITE | 10 |
| VINES, LUTHER | BTM | BLACK | 314 |
| | | BROWN RED | 0* |
| | | BUFF | 3 |
| | | SILVER LACE | 9 |
| | | WHITE | 97 |
| | LF | BUFF | 4 |
| WAGONER, MARCEL | BTM | BLACK | 29 |
| | | WHITE | 36 |
| WALDAU, D&T | BTM | BARRED | 2 |
| | | BLACK | 18 |
| | | BLUE | 1 |
| | | MOTTLED | 0* |
| | | WHITE | 21 |
| WALTER, GORDON | BTM | BLACK | 3 |
| | | BROWN RED | 0* |
| | LF | BLACK | 7 |
| | | BLUE | 2 |
| | | BUFF | 2 |
| | | PARTRIDGE | 0* |
| | | WHITE | 0* |
| WATFORD, RAY | LF | BLACK | 35 |
| WEST, WM | LF | BLACK | 18 |
| | | BUFF | 18 |
| WHISPERING PINES | BTM | BARRED | 1 |
| | | BIRCHEN | 0* |
| | | FRIZZLE | 12 |
| | | GOLD LACE | 1 |
| | | MOTTLED | 0* |
| | | SILVERLACE | 4 |
| WIGHTMAN, EMMA | BTM | BARRED | 1 |
| | | BLACK | 2 |
| | | BLUE | 0* |
| | | BROWN RED | 0* |
| | | BUFF | 5 |
| | | MOTTLED | 0* |
| | | RED | 1 |
| | | SPLASH | 0* |
| WILTSHIRE, TOM (FAM) | BT | WHITE | 9 |
| | LF | BLUE | 0* |
| | | BUFF | 1 |
| WOLFE, GRANT (FAM) | LF | WHITE | 1 |
| WOLFF, JIM | BTM | BLACK | 66 |
| | | WHITE | 3 |
| WOLLARD, DENNIS | BTM | BLACK | 4 |
| | | BUFF | 5 |
| | | GOLD LACE | 0* |
| | LF | BUFF | 5 |
| WRIGHT, DONALD | BTM | BLACK | 30 |
| | | BUFF | 0* |
| | | WHITE | 37 |
| YOBST, JAY (FAM) | BTM | BARRED | 2 |
| | | BIRCHEN | 0* |
| | | BLACK | 65 |
| | | BLUE | 6 |
| | | BUFF | 3 |
| | | COLUMBIAN | 0* |
| | | FRIZZLE | 10 |
| | | MOTTLED | 41 |
| | | SILVERLACE | 2 |
| | | SILVER PENCIL | 2 |
| | | SPLASH | 0* |
| | | WHITE | 67 |
| | LF | BLACK | 2 |
| | | BUFF | 16 |
| ZIEHM, BILL | BTM | BLACK | 10 |
| | | BROWN RED | 1 |
| ZIMDARS, LEON | BTM | BLACK | 0* |
| | | WHITE | 5 |

It's that time again!

Membership

MEMBERSHIPS RUN FROM JANUARY TO JANUARY AND ARE AVAILABLE FROM DENNIS WOLLARD 1913 BEAU BASSIN ROAD, CARENCRO, LA 70520-9539 318-896-5442

\$15.00/FAMILY, \$10.00/SINGLE, \$7.50/JUNIORS UNDER 18. PLEASE SEND AMERICAN CURRENCY

NAME _____

ADDRESS _____

CITY _____ STATE _____ ZIP _____

PHONE _____ TYPE OF COCHINS RAISED _____

THIS ENTITLES YOU TO PARTICIPATION IN ALL CI MEETS, MASTER BREEDER POINTS, AND A NEWSLETTER 3 TIMES A YEAR.

SHOW REPORTS ARE ONLY AS ACCURATE AS THE "SHOW" SECRETARIES THAT FILE THEM! ANY QUESTIONS ON ERRORS IN INFORMATION- CONTACT YOUR "SHOW" SECRETARY FIRST.

Best Competition

From St. Petersburg Times:

More than 10,000 people flocked to the 14th annual Wayne (Neb.) Chicken Show. This year's theme: Poultry in Motion.

The Chickendale Dancers — a group of men wearing shorts and paper bags with beaks over their heads — won for best theme-related float in the show's parade.

The winner of the National Cluck-Off contest clucked 36 times in 15 minutes, and in the Egg-Drop contest, the winner caught an egg without breaking it from a height of 54 feet, 4 inches. Andy Chap-Doran of New York City won the chicken-calling contest, barely edging out another contestant who attracted chickens by dropping her earrings on the ground.



"They're right, Ralph — we have to give them two weeks' notice."

HELP

HELP! HELP! HELP! HELP! HELP!

A "PAUL" SENT ME MONEY FOR A PATCH QUITE A WHITE AGO AND I AM SURE WONDERING WHERE IT IS. PLEASE GIVE ME A LAST NAME AND ADDRESS. SORRY FOR THE MIX UP. I WANT TO SEND YOU YOUR PATCH.

YOU CAN PURCHASE THESE PATCHES FROM:
PAT LACEY
W5055 US HWY 10
NEILLSVILLE, WI 54456
717-743-4799



THEY WILL BE THE SAME PRICE WHETHER BOUGHT AT A SHOW I AM AT OR THROUGH THE MAIL. EACH PATCH IS \$5.00. PLEASE MAKE YOUR CHECK PAYABLE TO "COCHINS INTERNATIONAL".

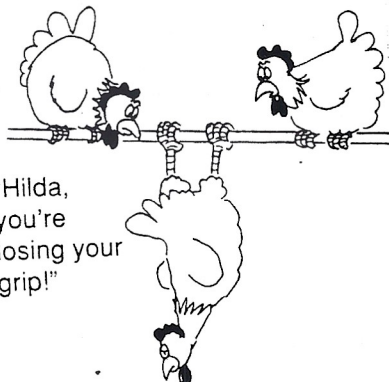
TECHNOLOGY

WELCOME TO THE MASTER BREED PROGRAM

WE HAVE A NEW CHAIRMAN OF OUR VERY SUCCESS-FULL MASTER BREEDER PROGRAM. HIS NAME IS KARL RAU FROM WEEKS MILLS, MAINE. KARL STARTED IN COCHINS AT 8 YEARS OLD. HE ALSO RACED HOMING PIGEONS AND RAISED REGISTERED NUBIAN GOATS. HE IS A HIGH SCHOOL MATHEMATICS TEACH AND HAS A GREAT INTEREST IN COMPUTERS AND STATISTICS. KARL HAS ACCESS TO COMPUTERS AND PRINTERS, WHICH WILL BE A GREAT HELP IN HIS NEW POSITON. DIRECTORS, PLEASE DIRECT YOUR SHOW REPORTS TO KARL. I WILL BE SENDING YOU NEW INFORMATION ON THAT. MEMBERS, KARL'S ADDRESS IS RR1 BOX 350 WEEKS MILLS, MAINE 04361,PHONE 207-445-2315. WE ALL HOPE KARL ENJOYS HIS NEW POSITION!

WE DO HAVE TO GIVE A BIGGGG THANKS TO BARB LEGRAND WHO HAS BEEN OUR POINTS CHAIR SINCE THE CLUB WAS FORMED AT COLUMBUS. WITHOUT BARB VOLUNTEERING TO KEEP OUR MASTER BREEDER RECORDS, WE COULD NOT HAVE STARTED UP THE PROGRAMS. SHE HAS DONE AN EXCELLENT JOB AND HAS BEEN FUN TO WORK WITH. THANKS BARB!

THE MASTER BREEDER PROGRAM HAS GENERATED A LOT OF INTEREST AND EXCITEMENT. I ALSO FEEL IT HAS CAUSED THE DEVELOPMENT OF INTEREST IN ALL OF THE COLORS AND FEATHER PATTERNS.



"Hilda,
you're
losing your
grip!"

NORTHEASTERN POULTRY CONGRESS 1/14,15/95
WEST SPRINGFIELD,MASS REGIONAL

152 COCHINS
CH LG...BUFF K WILLIAM WEST
RES LG..BUFF C WILLIAM WEST
CH BAN BLACK K DONALD WRIGHT
RES BAN WHITE H DONALD WRIGHT
CH JUNIOR BAN WHITE H TRAVIS MACPHERSON
RES JUNIOR BAN BUFF P SCOTT KIMBALL
BV LG BLACK P WILLIAM WEST
RV LG BLACK K KAY ST AMOUR
BV LG BUFF K WILLIAM WEST
RV LG BUFF C WILLIAM WEST
BV LG PARTRIDGE H WITKOWSKIE
BR LG PARTRIDGE K WITKOWSKI
BV LG SPLASH H KAY ST AMOUR
BV BAN BLACK K DON WRIGHT
RV BAN BLACK P SCHROEDER
BV BAN WHITE H DON WRIGHT
RV BAN WHITE P KARL RAU
BV BAN BLUE P NORMAN RAU
RV BAN BLUE K TOM MOYER
BV BAN BUFF P ROBERT SOUTHERTON
RV BAN BUFF P ROBERT HAWES
BV BAN BIRCHEN K BRUCE ROBINSON
RV BAN BIRCHEN K BRUCE ROBINSON
BV BAN MOTTLED P KARL RAU
RV BAN MOTTLED P KARL RAU
BV BAN SILVERLACE P KARL RAU
RV BAN SILVERLACE P KARL RAU
BV BAN BROWN RED P CHARLES ANDERSON
RV BAN BROWN RED K CHARLES ANDERSON
BV BAN PARTRIDGE P ANGELIQUE LIVEZEY
RV BAN PARTRIDGE K ANGELIQUE LIVEZEY
BV BAN COLUMBIAN P BRUCE ROBINSON
RV BAN COLUMBIAN K BRUCE ROBINSON
BV BAN FRIZZLE K BRUCE ROBINSON
RV BAN FRIZZLE K BRUCE ROBINSON
JUDGES WHITNEY & NELSON

HART CO BANTAM HARTWELL, GA
12/10/94 REGIONAL

82 COCHINS
CH BAN BLACK K ROCKY HUGHEY
RES BAN WHITE P ROCKY HUGHEY
BV BAN BLACK K ROCKY HUGHEY
RV BAN BLACK P ROCKY HUGHEY
BV BAN WHITE P ROCKY HUGHEY
RV BAN WHITE K ROCKY HUGHEY
BV BAN BLUE K C.ANDERSON
RV BAN BLUE P C.ANDERSON
BV BAN BUFF K HAROLD MILLER
RV BAN BUFF C HAROLD MILLER

NO SHOW NAME OR DATE

CH LG...BUFF C L&M PETERSON
RES LG..BLACK H HELENA RIEBER
CH BAN BLACK K TIM HOOKER
BV LG BLACK HELENA RIEBER
BV LG BUFF L&M PETERSON
BV LG PARTRIDGE NORY KARDASH
RV LG PARTRIDGE BRET HITCHINGS
BV BAN BLACK TIM HOOKER

RV BAN BLACK DALE DIONNE
BV BAN WHITE KEITH LEGRAND
RV BAN WHITE KEITH LEGRAND
BV BAN BLUE DON JULIAR
RV BAN BLUE DON JULIAR
BV BAN BUFF L&M PETERSON
RV BAN BUFF L&M PETERSON
BV BAN BARRED DON JULIAR
RV BAN BARRED DON JULIAR
BV BAN MOTTLED DALE DIONNE
RV BAN MOTTLED DALE DIONNE
BV BAN SILVERLACE JULIE JONES
RV BAN SILVERLACE JULIE JONES

WISCONSIN INTERNATIONAL JANESVILLE, WI
DISTRICT 9/24,25/94

308 COCHINS

CH LG...BLACK H KANTLEHNER
RES LG...BLACK H P. SORENSEN
CH BAN WHITE P PAT LACEY
RES BAN BLACK K MIKE DONAHUE
JUNIOR CH LG WHITE H WILTSE
JUNIOR RES LG BUFF C K POLUM
JUNIOR CH BAN WHITE P J JONES
JUNIOR RES BAN D KRAUSE
OVERALL CH WHITE BAN P PAT LACEY
BV LG BLACK H KANTLEHNER
RV LG BLACK H PAUL SORENSEN
BV LG BUFF C BRAD KRAUSE
BV LG PARTRIDGE K BRET HITCHINGS
RV LG PARTRIDGE P ERIC WILHELM
BV BAN BLACK K MIKE DONAHUE
RV BAN BLACK C CRAIG CARROLL
BV BAN WHITE P PAT LACEY
RV BAN WHITE H TIM HOOKER
BV BAN BLUE P BILL KRUEGER
RV BAN BLUE K BILL KRUEGER
BV BAN BUFF K DAVE LAATSCH
RV BAN BUFF C GRE SERVES
BV BAN BARRED H AL STRUM
RV BAN BARRED JULIE JEWELS
BV BAN BIRCHEN SORENSEN
RV BAN C SORENSEN
BV BAN MOTTLED H DALE DIONNE
RV BAN MOTTLED P DALE DIONNE
BV BAN SILVER, LACE H WHISPERING PINES
RV BAN SILVER LACE C WHISPERING PINES

BV BAN BROWN RED C CRAIG CARROLL
RV BAN BROWN RED H DONAHUE
BV BAN PARTRIDGE C KOLACZ
RV BAN PARTRIDGE P DAN SCHMANDT
BV BAN GOLD LACE P PAT LACEY
RV BAN GOLD LACE P PAT LACEY
BV BAN FRIZZLE DAVE LAATSCH
RV BAN FRIZZLE DAVE LAATSCH
BV BAN BLUE MOTTLED C MCALLISTER
JUDGE J.B. HARRELL JR.

ROCKY STOKES POULTRY EDEN N.C.
REGIONAL 11/12/94

73 COCHINS

CH LG...BUFF K ANDY MARSINKO
RES LG...BLACK C JOANNE HAMM
CH BAN WHITE P C KIRKMAN
RES BAN BLACK C BILL OSBORNE
JUNIOR CH BAN WHITE C KRISTEN BALL
JUNIOR RES BAN BLACK C ROBERT BECK
OVERALL CH WHITE BAN P C KIRKMAN
BV LG BLACK C JOANNE HAMM
BV LG BUFF K ANDY MARSINKO
BV BAN BLACK C BILL OSBORNE
RV BAN BLACK K BILL OSBORNE
BV BAN WHITE P C KIRKMAN
RV BAN WHITE K BILL OSBORNE
BV BAN BLUE K RUFUS REAVIS
RV BAN BLUE K KARL URSHEL
BV BAN BIRCHEN P KARL URSHEL
RV BAN BIRCHEN H KARL URSHEL
BV BAN SILVERLACE L LAWSON

RV BAN SILVERLACE L LAWSON
BV BAN BROWN RED KARL URSHE
BV BAN PARTRIDGE P JAMES PURDY
RV BAN PARTRIDGE K KARL URSHEL
BV BAN FRIZZLE L LAWSON
RV BAN FRIZZLE L LAWSON
JUDGE WIL BURTON

OKLAHOMA STATE POULTRY SHAWNEE, OK
REGIONAL 12/3,4/94

99 COCHINS

CH LG...BLACK P PAUL BUCELLA
RES LG...BUFF H DEREK PEACH
CH BAN BLACK H LUTHER VINES
RES BAN BLACK C LUTHER VINES
JUNIOR CH LG BUFF H DEREK PEACH
JUNIOR RES LG BUFF H B BUCELLA
JUNIOR CH BAN BLACK P CHRIS LEE
JUNIOR RES BAN WHITE P CHRIS LEE
BV LG BLACK P PAUL BUCELLA
BV LG BUFF H DEREK PEACH
RV LG BUFF K PAUL BUCELLA
BV BAN BLACK H LUTHER VINES
RV BAN BLACK C LUTHER VINES
BV BAN WHITE K LUTHER VINES
RV BAN WHITE K PAUL BUCELLA
BV BAN BUFF K DON HOLT
RV BAN BUFF P DON HOLT
BV BAN FRIZZLE DON MADDEN
RV BAN FRIZZLE P BUCELLA

FANCY FEATHER TOPEKA HUTCHISON, KS
REGIONAL 10/29/94

18 COCHINS

CH LG...BUFF H#40
RS LG...WHITE P #16
CH BAN WHITE C #40
RES BAN WHITE H #40
OVERALL CH BUFF H #40
JUDGE DUANE URCH

PACIFIC N.W. POULTRY HILLSBORO, OR
REGIONAL 11/19,20/94

71 COCHINS

CH LG...BLACK P BOB ANDERSON
RES LG...BUFF K BOB ANDERSON
CH BAN BLACK C N&W BARNHOUSE
RES CH BAN BLACK P BARNHOUSE
JUNIOR CH LG BLACK K J. BRIDGER
RES JUNIOR CH LG BLUE K S ERICSON
JUNIOR CH BAN BLACK P J BRIDGER
RES CH JUNIOR BLACK H ANNA THOMAS
OVERALL CH BLACK P BOB ANDERSON
BV LG BLACKP BOB ANDERSON
RV LG BLACK H BOB ANDERSON
BV LG WHITE P KRISTI NORRIS
RV LG WHITE P KRISTI NORRIS
BV LG BLUE P KRISTI NORRIS
RV LG BLUE H BOB ANDERSON
BV LG BUFF K BOB ANDERSON
RV LG BUFF C BOB ANDERSON
BV LG SILVERLACE P BOB ANDERSON
BV LG BROWN RED P BOB ANDERSON
RV LG BROWN RED P BOB ANDERSON
BV BAN BLACK C N&W BARNHOUSE
RV BAN BLACK P N&W BARNHOUSE
BV BAN WHITE K E&M BEST
RV BAN WHITE DODDIE TRUEDSON
BV BAN BLUE K SUSAN CARLSON
RV BAN BLUE P SUSAN CARLSON
BV BUFF BAN L ERICSON
RV BAN BARRED K SUSAN EDWARDS
RV BAN BARRED K SUSAN EDWARDS
BV BAN MOTTLED H N&W BARNHOUSE
RV BAN MOTTLED H DODDIE TRUEDSON
BV BAN GOLDLACED H SARAH LEVINE
JUDGE ADKINS/AGAJANIA

ALABAMA BANTAM CLUB BIRMINGHAM, AL
REGIONAL 9/24/94

15 COCHINS

CH BAN BLACK PULLET LUTHER VINES
RES BAN BLACK K LUTHER VINES
BV BAN BLACK P LUTHER VINES
RV BAN BLACK K LUTHER VINES
BV BAN WHITE P LUTHER VINES
RV BAN WHITE P LUTHER VINES
BV BAN BLUE P MARTY MCGUIRE
BV BAN SILVERLACE P LUTHER VINES
RV BAN SILVERLACE P LUTHER VINES
JUDGE MELODY JONAS

LITTLE RHODY POULTRY EAST GREENWICH, RI
REGIONAL 11/26,27/94

56 COCHINS

CH LG...BLACK P ST AMOUR
RES LG...BLUE H ST AMOUR
CH BAN WHITE K BILL SIRRINE
RES BAN BLACK C TOMMY MOYER
BV LG BLACK P ST AMOUR
RV LG BLACK H ST AMOUR
BV LG BLUE H ST AMOUR
BV LG PARTRIDGE P ST AMOUR
RV LG PARTRIDGE K ST AMOUR
BV LG SPLASH ST AMOUR
BV BAN BLACK TOMMY MOYER
RV BAN BLACK PETER LUCA
BV BAN WHITE BILL SIRRINE
RV BAN WHITE PETER LUCA
BV BAN BLUE TOMMY MOYER
RV BAN BLUE TOMMY MOYER
BV BAN BUFF GEORGE SCHOPAC
BV BAN BROWN RED CHARLIE ANDERSON
RV BAN BROWN RED CHARLIE ANDERSON
BV BAN PARTRIDGE A LIVEZEY
RV BAN PARTRIDGE A LIVEZEY
JUDGE ART ROCHETTE

VIRGINIA POULTRY RICHMOND, VA
REGIONAL 11/19,20/94

81 COCHINS

CH LG...BUFF ANDY MARSINKO
RES LG...BUFF K ANDY MARSINKO
CH BAN BLACK C T MOYER
RES BAN WHITE H DON WRIGHT
JUNIOR CH BAN K TROY
JUNIOR RES BAN K TESTERMAN
BV LG BLACK P JOANNE HAMM
RV LG BLACK K ST AMOUR
BV LG BUFF K ANDY MARSINKO
RV LG BUFF K ANDY MARSINKO
BV LG PARTRIDGE P HAMM
RV LG PARTRIDGE K HAMM
BV LG SPLASH K MARSINKO
RV LG SPLASH K MARSINKO
BV BAN BLACK K MOYER
RV BAN BLACK H WRIGHT
BV BAN WHITE H WRIGHT
RV BAN WHITE K LUCA
BV BAN BLUE K MOYER
RV BAN BLUE H MOYER
BV BAN BUFF C WRIGHT
RV BAN BUFF H WRIGHT
BV BAN PARTRIDGE P A LIUEZEY
RV BAN PARTRIDGE H CHARLES HILLENBRAND

ROCHESTER POULTRY MUMFORD NY
REGIONAL 10/2/94

38 COCHINS

CH LG...BLACK C F&K ANDREWS
RES LG...BLUE P ROBIN LEWIS
CH BAN BLACK C JAMIE MATTS
RES BAN WHITE MICHAEL WING
JUNIOR CH LG P PART. GALEN LEWIS
JUNIOR RES LG H PART GALEN LEWIS

BV BAN PARTRIDGE DEVIN LEWIS
RV BAN PARTRIDGE DEVIN LEWIS
BV BAN RED EMMA WIGHTMAN
RV BAN RED EMMA WIGHTMAN
JUDGE BARRY/WINHAGE

NORTH CENTRAL AL. DECATUR
REGIONAL 12/10/94

49 COCHINS

CH BAN WHITE K LUTHER VINES
RES BAN BLACK P PHILLIP BRAND
JUNIOR CH BAN BLACK C CLINT PURSER
JUNIOR CH BAN WHITE C CLINT PURSER
BV BAN BLACK PHILLIP BRAND
RV BAN BLACK PHILLIP BRAND

BV BAN WHITE LUTHER VINES
RV BAN WHITE LUTHER VINES
BV BAN BARRED JUSTIN BURGESS
RV BAN BARRED JUSTIN BURGESS
BV BAN SILVERLACE LUTHER VINES
RV BAN SILVERLACE LUTHER VINES
JUDGE STAUFFER

FORSYTH FOWL FANCIERS WINSTON SALEM
REGIONAL 11/26/94

91 COCHINS

CH LG...BLACK H T&S STANLEY
RES LG...BUFF K ANDY MARSINKO
CH BAN BLACK P OTIS RAY
RES BAN BLACK P OTIS RAY
OVERALL CH BLACK BAN P OTIS RAY
BV LG BLACK H T&S STANLEY
RV LG BLACK H T&S STANLEY
BV LG BUFF K ANDY MARSINKO
RV LG BUFF H T&S STANLEY
BV LG SPLASH K ANDY MARSINKO
RV LG SPLASH P ANDY MARSINKO
BV BAN BLACK P OTIS RAY
RV BAN BLACK P OTIS RAY
BV BAN WHITE P C KIRKMAN
RV BAN WHITE K C KIRKMAN
BV BAN BLUE K M REVELS
RV BAN BLUE P M REVELS
BV BAN BUFF P M REVELS
RV BAN BUFF K M REVELS
BV BAN SILVERLACE P OTIS RAY
RV BAN SILVERLACE K OTIS RAY
BV BAN PARTRIDGE K M REVELS
RV BAN PARTRIDGE P KARL URSHEL
BV BAN SPLASH P M REVELS

ABILENE POULTRY ABILENE TX
REGIONAL 10/22/94

51 COCHINS

CH LG...BLACK P HOLLIS MITCHELL
RES LG...BLACK K HOLLIS
CH BAN BLACK H RUSSELL ESTLACK

JUNIOR CH BAN MICHAEL O BRIEN
OVERALL CH BUFF LG K BOB ANDERSON
BV LG BLACK H BOB ANDERSON
RV LG BLACK P BOB ANDERSON
BV LG BLUE P MCKOWN
RV LG BLUE P BOB ANDERSON
BV LG BUFF K BOB ANDERSON
RV LG BUFF P MAHLUMS
BV LG SILVERLACE P B BALDWIN
RV LG SILVERLACE K B BALDWIN
BV BAN BLACK H JOE MAZER
RV BAN BLACK H JOE MAZER
BV BAN WHITE K ESM BEST
RV BAN WHITE P JOE MAZER
BV BAN MOTTLED H W&N BARNHOUSE
RV BAN MOTTLED K W&N BARNHOUSE
BV BAN FRIZZLE H JOE MAZER
RV BAN FRIZZLE BRENDA TREIBEL
JUDGE URCH/HAMPTON

NEW ENGLAND POULTRY NORTHAMPTON MA
REGIONAL 10/2/94

29 COCHINS

CH LG...BLACK P WILLIAM WEST
RES LG...BUFF P WILLIAM WEST
CH BAN WHITE H CHARLES ANDERSON
RES BAN WHITE C CHARLES ANDERSON
JUNIOR CH BAN BLACK H C MARTIN
OVERALL CH LG BLACK P WILLIAM WEST
BV LG BLACK P W WEST
RV LG BLACK K W WEST
BV LG BUFF W WEST
BV LG PARTRIDGE H W WITKOWSKI
RV LG PARTRIDGE H W WITKOWSKI
BV BAN BLACK P CHARLES ANDERSON
RV BAN WHITE H CHARLES ANDERSON
BV BAN BLUE H CHARLES ANDERSON
BV BAN BUFF V TROMBLEY
RV BAN PARTRIDGE H W WITKOWSKI
BV BAN RED C RICHARD ORR
JUDGE YEAM

CARPET CITY POULTRY DALTON,GA
REGIONAL 10/22,23/94

93 COCHINS

CH LG...BLACK H TOMMY STANLEY
RES LG...BLACK P TOMMY STANLEY
CH BAN BLACK H LUTHER VINES
RES BAN WHITE K LUTHER VINES
OVERALL CH BLACK BAN H LUTHER VINES
BV LG BLACK H TOMMY STANLEY
RV LG BLACK P TOMMY STANLEY
BV LG BUFF H TIM BROWN
RV LG BUFF C TOMMY STANLEY

CH LG...BLACK H JOACHIMI
RES LG...BUFF H WOLLARD
CH BAN BLACK H BRAND
RES BAN BLACK K BRAND
JUNIOR CH BAN BLACK K MELANCON
RES JUNIOR BAN BLACK P MELANCON
OVERALL CH LG BLACK H JOACHIMI
BV LG BLACK H JOACHIMI
RV LG BLACK H JOACHIMI
BV LG BUFF H WOLLARD
RV LG BUFF P BROWN
BV BAN BLACK H BRAND
RV BAN BLACK K BRAND
BV BAN BUFF C WOLLARD
RV BAN BUFF P HOLT
BV BAN BIRCHEN P LAGRANGE
RV BAN BIRCHEN C LAGRANGE
JUDGE PADGETTE/JONAS

SOONER CLASSIC CLAREMORE OK
REGIONAL 11/3,6/94

32 COCHINS

CH LG...BLACK P ED ZELENY
RES LG...BLACK K ED ZELENY
CH BAN BLACK H FRED MCGEHEE
RES BAN WHITE P FRED MCGEHEE
JUNIOR CH BAN BLACK K L HALL
JUNIOR RES BAN WHITE K B BUCELLA
BV LG BLACK ED ZELENY
RV LG BLACK ED ZELENY
BV LG BUFF FOREST BEAUFORD
RV LG BUFF PAUL BUCELLA
BV BAN BLACK FRED MCGEHEE
RV BAN BLACK PAUL BUCELLA
BV BAN WHITE FRED MCGEHEE
RV BAN WHITE PAUL BUCELLA
JUDGE PADGETTE/MERRIOTT

H.O.P.E. HARMONY PA
REGIONAL 9/17,18,94

30 COCHINS

CH LG...BLACK H LOU FRAN FARM
RES LG...BLACK C PAUL STOCKMAN
CH BAN BLACK P JAY YOBST
RES BAN BLACK H JAY YOBST
BV LG BLACK LOU FRAN FARM
RV LG BLACK PAUL STOCKMAN
BV LG BUFF JACK TICKLE
BV BAN BLACK JAY YOBST
RV BAN BLACK JAY YOBST
BV BAN WHITE JAY YOBST
RV BAN WHITE JAY YOBST
BV BAN BLUE JAY YOBST
RV BAN BLUE JAY YOBST
BV BAN MOTTLED DANIELLE YOBST
RV BAN MOTTLED DANIELLE YOBST
BV BAN COLUMBIAN DANIELLE YOBST
BV BAN FRIZZLE DANIELLE YOBST

PEACH STATE COMMERCE GA
REGIONAL 1/21/95

32 COCHINS

CH BAN WHITE H HAROLD MILLER
RES BAN BLACK K HAROLD MILLER
BV BAN BLACK HAROLD MILLER
RV BAN BLACK HAROLD MILLER
BV BAN WHITE HAROLD MILLER
RV BAN WHITE HAROLD MILLER
BV BAN BLUE K&J TATE
RV BAN BLUE K&J TATE

DELMARVA POULTRY
REGIONAL 4/18/95

68 COCHINS

CH LG...BLACK H ST AMOUR
RES LG..SPLASH H ST AMOUR
CH BAN BLACK K MARTHA GRINER
RES BAN BLACK H MARTHA GRINER
JUNIOR CH BAN TOMMY MOYER
JUNIOR RES BAN TOMMY MOYER
BV LG BLACK ST AMOUR
RV LG BLACK ST AMOUR
BV BAN BLACK MARTH GRINER
RV BAN BLACK MARTHA GRINER
BV BAN WHITE DONALD WRIGHT
RV BAN WHITE DONALD WRIGHT
BV BAN BLUE TOMMY MOYER
RV BAN BLUE TOMMY MOYER
BV BAN BUFF ENNA WIGHTMAN
JUDGE RICK PORR

NORTH LOUISIANA POULTRY HAYNESVILLE LA
REGIONAL 3/11/95

70 COCHINS

CH LG...BLACK H W&I JOACHIM
RES LG...BLACK H W&I JOACHIM
CH BAN BLACK C LUTHER VINES
RES BAN WHITE RODNEY WRIGHT
BV LG BLACK W&I JOACHIM
RV LG BLACK W&I JOACHIM
BV LG BUFF DENNIS WOLLARD
RV LG BUFF DENNIS WOLLARD
BV BAN BLACK LUTHER VINES
RV BAN BLACK LUTHER VINES
BV BAN WHITE RODNEY WRIGHT
RV BAN WHITE LUTHER VINES
BV BAN BUFF DONALD HOLT
RV BAN BUFF DONALD HOLT
JUDGE STAUFFER

GARDEN STATE FLEMINGTON N J
REGIONAL 11/12,13/94

CH LG...BLACK H MINNICH'S COOP
RES LG..BUFF K PAM WEIDEL
CH BAN BLACK C TOMMY MOYER
RES BAN BLACK P GEORGE SCHROEDER
JUNIOR CH BAN BLACK C TOMMY MOYER
RES JUNIOR BLACK K TOMMY MOYER
OVERALL CH BLACK C BAN TOMMY MOYER
BV LG BLACK H MINNICH'S COOP
RV LG BLACK P ST AMOUR
BV LG BUFF K PAM WEIDEL
RV LG BUFF PAM WEIDEL
BV LG MOTTLED MINNICH'S COOP
RV LG PARTRIDGE P ST AMOUR
RV LG PARTRIDGE K ST AMOUR
BV LG SPLASH H ST AMOUR
BV LG FRIZZLE ROLAND PETERS
BV BAN BLACK C TOMMY MOYER
RV BAN BLACK P GEORGE SCHROEDER
BV BAN WHITE DONALD WRIGHT
RV BAN WHITE H DONALD WRIGHT
BV BAN BLUE H TOMMY MOYER
RV BAN BLUE K TOMMY MOYER
BV BAN BUFF K BOB ANKE
RV BAN BUFF P BOB ANKE
BV BAN PARTRIDGE P A LIVEZEY
RV BAN PARTRIDGE K A LIVEZEY
93 COCHINS
JUDGE PORR/FANE

TRI CITIES MUSCLE SHOALS AL
REGIONAL 2/4/95

51 COCHINS

CH LG...BUFF K LUTHER VINES
RES LG..BUFF P LUTHER VINES
CH BAN BLACK C LUTHER VINES
RES BAN WHITE P JIMMIE CURRENS
JUNIOR CH BANTAM BLACK P CLINT PURSER
RES JUNIOR BAN BLACK P CLINT PURSER
OVERALL CH BLACK C LUTHER VINES
BV LG BUFF LUTHER VINES
RV LG BUFF LUTHER VINES

BV BAN BLACK LUTHER VINES
RV BAN BLACK LUTHER VINES
BV BAN WHITE JIMMIE CURRENS
RV BAN WHITE LUTHER VINES
BV BAN MOTTLED TERRY CAMPBELL
RV BAN SILVERLACE LUTHER VINES
RV BAN SILVERLACE LUTHER VINES
BV BAN FRIZZLE TERRY CAMPBELL
RV BAN FRIZZLE TERRY CAMPBELL
JUDGE MC CARTY

FRIENDSHIP POULTRY
REGIONAL 1/28/95

52 COCHINS

CH BAN BLACK H OTES RAY
RES BAN WHITE K ROCKY HUGHEY
BV BAN BLACK H OTIS RAY
RV BAN BLACK P ROCKY HUGHEY
BV BAN WHITE K ROCKY HUGHEY
RV BAN WHITE H HAROLD MILLER
BV BAN BLUE P K&J TATE
RV BAN BLUE K K&J TATE
BV BAN BUFF H DAVID RILEY
RV BAN BUFF H DAVID RILEY
JUDGE INMAN

UNIONTOWN POULTRY UNIONTOWN PA
REGIONAL 10/21/22/94

141 COCHINS

CH LG...BUFF H J&K YOBST
RES LG..BUFF K J&K YOBST
CH BAN WHITE C J&K YOBST
RES BAN WHITE C J&K YOBST
OVERALL CH J&K YOBST
BV LG BLACK J&K YOBST
RV LG BLACK J&K YOBST
BV LG WHITE LEWIS KUHN'S
RV LG WHITE LOU FRAN FARMS
BV LG BLUE LOU FRAN FARMS
RV LG BLUE HELEN NOEL
BV LG BUFF J&K YOBST
RV LG BUFF J&K YOBST
BV LG SILVERLACED LOU FRAN FARMS
RV LG SILVERLACED LOU FRAN FARMS
BV LG PARTRIDGE LOU FRAN FARMS
RV LG PARTRIDGE LOU FRAN FARMS
BV LG GOLD LACED LOU FRAN FARMS
RV LG FRIZZLE LOU FRAN FARMS
RV LG FRIZZLE LOU FRAN FARMS
BV BAN BLACK J&K YOBST
RV BAN BLACK J&K YOBST
BV BAN WHITE J&K YOBST
RV BAN WHITE J&K YOBST
BV BAN BLUE J&K YOBST
RV BAN BLUE J&K YOBST
BV BAN BUFF LEWIS KUHN'S
RV BAN BUFF DICK GREUBEL
BV BAN BARRED CLYDE KNAUF
RV BAN BARRED LEWIS KUHN'S
BV BAN BIRCHEN J&K YOBST
RV BAN BIRCHEN CLYDE KNAUF
BV BAN MOTTLED J&K YOBST
RV BAN MOTTLED CLYDE KNAUF
BV BAN SILVERLACED J&K YOBST
RV BAN SILVERLACED J&K YOBST
BV BAN BROWN RED DICK GREUBEL
RV BAN BROWN RED DICK GREUBEL

BV BAN PARTRIDGE LEWIS KUHN'S
RV BAN PARTRIDGE LEWIS KUHN'S
BV BAN COLUMBIAN J&K YOBST
BV BAN GOLD LACE J&K LONG
BV BAN RED J&K LONE
BV BAN SPLASH J&K YOBST
BV BAN FRIZZLE J&K YOBST
RV BAN FRIZZLE J&K YOBST
JUDGE HOLMES

HUNTSVILLE FALL FAIR REGIONAL
HUNTSVILLE,ONTARIO 9/24/94

58 COCHINS

CH LG...BUFF P MAC HARP
RES LG WHITE K MAC HARP
CH BAN BLACK C RAY HICKEY
RES BAN WHITE K KEITH ROSS
OVERALL CH BLACK C RAY HICKEY
BV LG BLACK H RAY HICKEY
RV LG BLACK C J CHYNOWETH
BV LG WHITE K MAC HARP
RV LG WHITE P RAY HICKEY
BV LG BUFF P MAC HARP
RV LG BUFF K L&M PETRIC
BV LG PARTRIDGE K DIANE GERROW
RV LG PARTRIDGE P DIANE GERROW
BV BAN BLACK C RAY HICKEY
RV BAN BLACK H RAY HICKEY
BV BAN WHITE C KEITH ROSS
RV BAN WHITE P MAC HARP
BV BAN BLUE H KEITH ROSS
RV BAN BLUE C KEITH ROSS
BV BAN BUFF H KEITH ROSS
RV BAN BUFF K KEITH ROSS
JUDGE SHRUM/BYERS

BRACEBRIDGE FALL FAIR REGIONAL
BRACEBRIDGE ONTARIO 9/18/94

61 COCHINS

CH LG... BUFF K LARRY PETRIC
RES LG..WHITE K MAC HARP
CH BAN BLACK K RAY HICKEY
RES BAN WHITE RAY HICKEY
OVERALL CH BLACK BAN K RAY HICKEY
BV LG BLACK K RAY HICKEY
RV LG BLACK H RAY HICKEY
BV LG WHITE K MAC HARP
RV LG WHITE H RAY HICKEY
BV LG BUFF K LARRY PETRIC
RV LG BUFF P MAC HARP
BV LG PARTRIDGE H MAC HARP
RV LG PARTRIDGE C W L BROWN
BV BAN BLACK C RAY HICKEY
RV BAN BLACK H RAY HICKEY
BV BAN WHITE K RAY HICKEY
RV BAN WHITE H K ROSS
BV BAN BLUE C KEITH ROSS
RV BAN BLUE H KEITH ROSS
BV BAN BUFF H KEITH ROSS
RV BAN BUFF K KEITH ROSS
JUDGE SHRUM/

ROYAL WINTER FAIR TORONTO ONTARIO
11/8 - 19/94

70 COCHINS

CH LG...BLACK P RAY WATFORD
RES LG.. WHITE K MAC HARP
CH BAN BLACK H ORVILLE SHEWFELT
RES BAN WHITE P MICHAEL BECKER
OVERALL CH BLACK H ORVILLE SHEWFELT
BV LG BLACK P RAY WATFORD
RV LG BLACK K MAC HARP
BV LG WHITE K MAC HARP
RV LG WHITE P MAC HARP
BV LG BUFF K MAC HARP
RV LG BUFF P MAC HARP
BV LG PARTRIDGE H MAC HARP
RV LG PARTRIDGE H JOHN TILT
BV BAN BLACK H ORVILLE SHEWFELT

RV BAN BLACK K MAC HARP
 BV BAN WHITE P MICHAEL BECKER
 RV BAN WHITE C ORVILLE SHEWFELT
 BV BAN BUFF P MICHAEL BECKER
 RV BAN BUFF H MICHAEL BECKER
 JUDGES DONNELLY/MONTEITH

FEATHER FANCIER 50TH ANNIVERSARY SHOW
 REGIONAL 3/5/95 WOODSTOCK ONTARIO

71 COCHINS
 CH LG BLACK H MAC HARP
 RES LG BUFF H MAC HARP
 CH BAN BLACK C WAYNE REID
 RES BAN WHITE MAC HARP
 JUNIOR CH BAN BLACK C SHANE CRAMP
 JUNIOR RES BAN WHITE H SHANE CRAMP
 OVERALL CH BLACK BAN C WAYNE REID
 BV LG BLACK MAC HARP
 BV LG WHITE H MAC HARP
 RV LG WHITE C MAC HARP
 BV LG BUFF H MAC HARP
 RV LG BUFF C MAC HARP
 BV BAN BLACK C WAYNE REID
 RV BAN BLACK H MAC HARP
 BV BAN WHITE H MAC HARP
 RV BAN WHITE C MICHAEL BECKER
 BV BAN BLUE H HANS MAAS
 RV BAN BLUE C HANS MAAS
 BV BAN BUFF P MICHAEL BECKER
 RV BAN BUFF C MICHAEL BECKER
 JUDGE SHRUM

OHIO NATIONAL COLUMBUS OHIO
 11/12,13/94 REGIONAL

CH LG..BUFF K L&M PETERSON
 RES LG.BUFF P B JUSTICE
 CH BAN WHITE K K LEGRAND
 RES BAN BLACK H C CARROLL
 JUNIOR CH BAN BLACK K R HERTLING
 JUNIOR CH BAN WHITE P M HERTLING
 OVERALL CH WHITE BAN K K LEGRAND
 BV LG BLACK H V MARKLEY
 RV LG BLACK P V MARKLEY
 BV LG WHITE P MAC HARP
 RV LG WHITE P G WOLFE
 BV LG BUFF L&M PETERSON
 RV LG BUFF B JUSTICE
 BV LG BARRED P M PITTS
 RV LG BARRED C M PITTS
 BV LG GOLD LACE P W MUSGRAVE
 BV BAN BLACK H C CARROLL
 RV BAN BLACK K L&M PETERSON
 BV BAN WHITE K K LEGRAND
 RV BAN WHITE K L VINES
 BV BAN BLUE K M LHAMON
 RV BAN BLUE H M LHAMON
 BV BAN BUFF K L&M PETERSON
 RV BAN BUFF K L&M PETERSON
 BV BAN BARRED C D JULIAR
 RV BAN BARRED H D JULIAR
 BV BAN MOTTLED H D DIONNE
 RV BAN MOTTLED K D DIONNE
 BV BAN SILVERLACE P L VINES
 RV BAN SILVERLACE P L VINES
 BV BAN BROWN RED C C CARROLL
 RV BAN BROWN RED H M DONAHUE
 BV BAN PARTRIDGE K W DOCHRING
 RV BAN PARTRIDGE H W DOCHRING
 BV BAN RED P W KORNHAUS
 RV BAN RED P W KORNHAUS
 BV BAN SPLASH H KORNHAUS

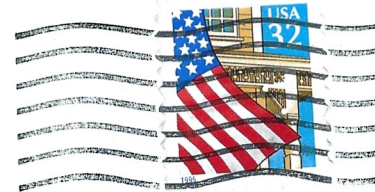
BV BAN FRIZZELE D YOBST
 RV BAN FRIZZELE C D YOBST
 267 COCHINS
 JUDGE HALBACH/PADGETT

BOSTON SHOW TOPSFIELD
 REGIONAL 10/22,23/94

96 COCHINS
 CH LG...BLACK H ST AMOUR
 RES LG..PARTRIDGE H WITKOWSKI
 CH BAN BLUE P NORMAN RAU
 RES BAN WHITE K KARL RAU
 JUNIOR CH LG PARTRIDGE P HACKETT
 JUNIOR CH BAN BLACK C K CARLE
 OVERALL CH BLUE BAN P NORMAN RAU
 BV LG BLACK H ST AMOUR
 RV LG BLACK H ST AMOUR
 BV LG PARTRIDGE H W WITKOWSKI
 RV LG PARTRIDGE H W WITKOWSKI
 BV LG SPLASH H ST AMOUR
 BV BAN BLACK C MOYER
 RV BAN BLACK H ANDERSON
 BV BAN WHITE P N RAU
 RV BAN WHITE P N RAU
 BV BAN BLUE P N RAU
 RV BAN BLUE H MOYER
 BV BAN BUFF P R HAWES
 RV BAN BUFF K R HAWES
 BV BAN BARRED H CONKEY
 RV BAN BARRED C CONKEY
 BV BAN MOTTLED P K RAU
 RV BAN MOTTLED K K RAU
 BV BAN SILVERLACE P K RAU
 RV BAN SILVERLACE K K RAU
 BV BAN BROWN RED P C ANDERSON
 BV BAN PARTRIDGE P LIVEZEY
 RV BAN PARTRIDGE K LIVEZEY

12

FROM THE COOP OF
 PAT LACEY
 W5055 U.S. Hwy 10
 Neillsville, WI 54456



"Just how long have you been working in the aviary, Hooper?"

dues exp 12/95
 Robert Hawes
 8 Short Wharf Rd
 Hampden, ME 04444