



# COCHINS International

Bantam & Standard

ESTABLISHED 1992

## COCHIN NEWS



EDITOR: PAT LACEY

VOLUME 4 JANUARY 1994

### PRESIDENT'S MESSAGE

I HOPE ALL OF YOU HAVE HAD A GOOD CHRISTMAS AND NEW YEARS. AT THIS TIME OF YEAR COCHIN BREEDERS ACROSS THE COUNTRY ARE BEGINNING TO SELECT THEIR BREEDERS TO PRODUCE THOSE FUTURE CHAMPIONS.

WHEN PICKING THE COCHIN IT IS VERY IMPORTANT TO SELECT FOR TYPE AND A FORWARD TILT OF CARRIAGE. DO NOT BREED FROM BIRDS THAT WALK AROUND WITH THEIR HEADS ABOVE THEIR CUSHIONS. I DO NOT BELIEVE IT IS POSSIBLE TO HAVE A BIRD WITH TOO MUCH FORWARD TILT.

SELECT BIRDS THAT HAVE THE WIDEST SKULLS, LARGEST REDDISH EYE AND A SMOOTH EVENLY SPREAD FIVE POINT COMB. THE EYE COLOR IS ONE OF THE HARDEST THINGS TO MAINTAIN IN BLACKS, ALMOST ALL FADE WITH AGE. SO USE THE STRONGEST EYE COLOR YOU HAVE IN THE OLDEST BIRDS.

WIDTH OF FEATHER SHOULD BE SELECTED THROUGHOUT ALL SECTIONS OF THE BIRDS. AVOID BREEDING BIRDS WITH NARROW, STRINGY FEATHERING, WHICH IS COMMONLY FOUND IN WHITES. THE WINGS SHOULD BE SHORT AND WIDE WITH BLUNT ROUND ENDS. TRY TO BREED FROM BIRDS THAT CARRY THEIR WINGS TUCKED HIGH AND TIGHT. THE WING CARRIAGE IN TODAY'S COCHINS IS BY FAR TOO LOW. I HAVE SEEN BIRDS WINGS AT SHOWS DRAG ON THE FLOOR OF THE COOP. THIS IS UNEXCEPTABLE.

FOOT FEATHERING SHOULD BE ABUNDANT, WIDE SPREAD AND WIDE IN WIDTH OF FEATHER. DO NOT BREED BIRDS THAT ARE BARE ON THE MIDDLE TOE. FOOT FEATHERING SHOULD NOT BE NARROW AND LONG. NARROW AND LONG FOOT FEATHERING GOES HAND IN HAND WITH NARROW AND LONG WINGS, STIFF TAILS, AND VULTURE HOCKS. FOOT COLOR SHOULD BE THE BRIGHTEST, DEEPEST YELLOW THAT YOU CAN IMAGINE. ONE SHOULD ALWAYS SELECT THEIR BREEDERS FOR THE BEST OF COLOR. ON BLACKS THAT ARE BLACK TO THE SKIN, IT IS COMMON FOR ONLY THE BOTTOM OF THE FOOT TO BE YELLOW, SHANKS DUSTY YELLOW. THIS IS EXCEPTABLE, BUT MAKE SURE THE FOOT BOTTOM IS YELLOW. TO IMPROVE THE FOOT COLOR, YOU CAN BREED FROM BIRDS THAT ARE LIGHT IN UNDERCOLOR, BUT BE CAREFUL NOT TO LET THE UNDERCOLOR TURN WHITE. IN WHITES, THE ONLY THING EXCEPTABLE IS YELLOW FOOT AND SHANK. GREEN SHANKS ARE COMMON WHEN BLACKS AND WHITES ARE CROSSED. THIS IS NOT EXCEPTABLE IN WHITES.

REMEMBER, THERE ARE NO PERFECT BIRDS AND FOR THAT REASON IT IS WHY IT IS SO HARD TO PUT MATINGS TOGETHER. ONE HAS TO WEIGH THE IMPORTANCE OF EACH AND EVERY FAULT. SOME FAULTS YOU WILL HAVE TO TOLERATE. OTHERS CANNOT BE TOLERATED AT ALL. ALWAYS FOLLOW THE GOLDEN RULE AND NEVER BREED TWO BIRDS WITH THE SAME FAULTS. IN FUTURE NEWSLETTERS I WILL DISCUSS IN GREAT DETAIL EACH AND EVERY PART OF THE COCHIN.

JUST A FEW WORDS ABOUT CLUB BUSINESS. WE CURRENTLY HAVE 182 MEMBERS AND EXPECT TO HIT 200 BEFORE LONG. IF YOU HAVE ANY FRIENDS THAT ARE COCHIN ENTHUSIASTS, PLEASE ENCOURAGE THEM TO JOIN. REMEMBER, DUES EXPIRE IN JANUARY, SO GET YOUR DUES IN TO OUR NEW SEC/TREAS. DENNIS WOLLARD. I WOULD LIKE TO WELCOME DENNIS TO OUR CLUB. AS A NEW OFFICER WE HAVE FOUND HIM VERY ORGANIZED AND PROFICIENT AT HIS DUTIES.

THERE HAS BEEN A LOT OF QUESTIONS ABOUT HOW THE AWARDS AND POINTS ARE ISSUED. NOTHING IS DONE UNTIL A SHOW REPORT IS RECEIVED FROM THE SHOW SECRETARY. ONCE WE RECEIVE THE SHOW REPORT, BARB LEGRAND CALCULATES AND ENTERS THE POINTS INTO THE COMPUTER UNDER THE EXHIBITORS.

ELTON MINNICH ORDERS THE AWARDS FROM THE SHOW REPORTS (DISTRICTS & NATIONALS). AWARDS ARE MAILED OUT DIRECTLY TO THE EXHIBITORS FROM THE SUPPLIER. NO MULTIPLE AWARDS WILL BE ISSUED. YOU WILL RECEIVE THE AWARD FOR THE HIGHEST LEVEL THAT YOU HAVE WON. AS AN EXAMPLE: A BLACK BANTAM BECOMES BEST OF VARIETY, THEN BECOMES BEST OF BREED, THEN GOES ON TO BECOME OVERALL CHAMPION... YOU DO NOT GET THREE PLAQUES... ONLY ONE FOR THE HIGHEST LEVEL YOU ACHIEVE THE OVERALL CHAMPION. THIS WILL ENABLE US TO STAY WITHIN OUR AWARDS BUDGET.

HOPE YOU HAVE A GOOD HATCH!

PRESIDENT H. CRAIG CARROLL

**we're headed in the right direction**

# VICE PRESIDENT

## VICE PRESIDENTS REPORT

WELCOME - TO MY NEW POSITION. I CLOSED OUT MY TREASURY THIS PAST WEEK. DENNIS WOLLARD FROM CARENCRO, LA IS NOW OUR TREASURER PLUS MEMBERSHIP PERSON. SEND HIM YOUR DUES PLUS YOUR SUPPORT LIKE YOU DID TO ME. DENNIS IS EXCITED SO I HOPE WE WILL KEEP HIM PUMPED UP!

I UNDERSTAND THAT THE EASTERN NATIONAL MEET BID FOR 1994 IS NOT MATERIALIZING. LETS HAVE ANOTHER DISTRICT REQUEST IT. I HOPE A SHOW WILL STEP FORWARD AND FILL THAT VOID.

THIS IS OUR CLUB SO IF IT IS TO BE GREAT, IT TAKES ALL OF US TO PULL TOGETHER. I AM ALWAYS WILLING TO DISCUSS IDEAS OR JUST TALK ABOUT COCHINS. LETS DO IT - LETS MAKE COCHINS INTERNATIONAL A GREAT CLUB! I PLAN ON IT. DO YOU?

ELTON MINNICH VICE PRESIDENT

## *TREASURER / MEMBERSHIP*

### DEAR COCHIN FRIENDS

AS THE NEW MEMBERSHIP CHAIRMAN OF COCHINS INTERNATIONAL, I WOULD LIKE TO ENCOURAGE EACH AND EVERY ONE TO MAKE A NEW YEARS RESOLUTION TO GET A LEAST ONE NEW MEMBER IN 1994. CURRENTLY THE 1993 MEMBERSHIP IS 192. JUST THINK OF THE POSSIBILITIES IF WE DOUBLE OUR MEMBERSHIP TO 344...MORE TROPHIES, MORE SHOWS, AND MORE QUALITY COCHINS RAISED.

I AM ACCEPTING DUES FOR 1994 AT THIS TIME. (NOTE! ALL MEMBERSHIPS BECOME DUE JANUARY 1ST. WE RUN ALL OUR MEMBERSHIPS ON A JAN. 1 TO JAN. 1 BASIS. IN THIS WAY ALL MEMBERS WILL KNOW WHEN THEIR DUES ARE DUE. MASTER BREED POINTS WILL ONLY REMAIN VALID UNTIL MARCH 31 IF MEMBERSHIP IS NOT RECIEVED.) WE ALREADY HAVE TWO VERY EAGER MEMBERS WHO HAVE PAID 1995 DUES. IF YOU ARE LIKE ME, AND BELONG TO SEVERAL POULTRY CLUBS IT IS DIFFICULT TO KEEP TRACK OF YOUR DUES. THE JANUARY 1 DATE WILL BE HELPFUL. IF YOUR EXPIRATION YEAR, NAME SPELLING AND/OR ADDRESS DOES NOT AGREE WITH YOUR RECORDS, PLEASE DROP ME A LINE AND LET ME KNOW WHAT IS WRONG. PLEASE NOTE MY NEW ADDRESS. SINCE MY STREET WAS PAVED FOUR MONTHS AGO, AND WITH THE ADDITION OF THE 911 EMERGENCY SERVICE, I NOW HAVE A STREET ADDRESS. PLEASE ADDRESS ALL CORRESPONDENCE TO DENNIS WOLLARD, 1913 BEAU BASSIN ROAD, CARENCRO LA. 70520-9539

IT IS IMPORTANT TO KEEP YOUR DUES CURRENT SO YOU WILL NOT MISS OUT ON ANY INTERESTING ARTICLES IN THE COCHIN NEWS AND SO YOU DON'T LOOSE ANY MASTER BREEDER POINTS.

WE ALREADY HAVE 17 MEMBERS PAID FOR 1994 AND ONLY YOU CAN DOUBLE THIS NUMBER. LET'S PROMOTE THE COCHIN BREED AND MAKE THIS CLUB NUMBER ONE INTERNATIONALLY, JUST LIKE THE CLUB NAME "COCHINS INTERNAIONAL"

TREASURER/MEMBERSHIP  
DENNIS WOLLARD

### DEAR SOUTHWEST DISTRICT COCHIN MEMBERS

THIS DISTRICT INCLUDES THOSE WHO LIVE IN THE GREAT STATES OF COLORADO, KANSAS, MISSOURI, OKLAHOMA, ARKANSAS, TEXAS, NEW MEXICO AND LOUISIANA. AS SOUTHWEST DISTRICT DIRECTOR, I WOULD LIKE TO ENCOURAGE ALL SHOW SECRETARIES TO WRITE ME EARLY SO I CAN GET THE NECESSARY PAPER WORK TO THEM FOR YOUR RESPECTIVE SHOWS. IT IS MOST IMPORTANT THAT YOU CONTACT ME BEFORE YOU PRINT YOUR PREMIUM LIST SO COCHINS INTERNATIONAL CAN BE RECOGNIZED IN THE LIST. I THINK THIS RECOGNITION IS AN EXCELLENT WAY TO PROMOTE COCHINS INTERNATIONAL AND TO SUPPORT OUR CURRENT MEMBERS. PLEASE ADDRESS YOUR REQUESTS TO DENNIS WOLLARD 1913 BEAU BASSIN ROAD CARENCRO, LA. 70520-9539 OR IF TIME IS OF THE ESSENCE, PLEASE CALL ME IN THE EVENINGS AT (318) 896-5442. I AM NOT A NIGHT OWL AND I GO TO BED WITH THE CHICKENS AT 10:00 PM.

### **The Far Side**



Chicken serial killers

# RAISING AND BREEDING LARGE BUFF COCHINS

BY MARK PETERSON

(PART 1)

I THINK I WILL BEGIN BY GIVING SOME OF THE BREED QUALITIES THAT TEND TO MAKE COCHINS UNIQUE TO THEMSELVES. MANY OF THE THINGS THAT I'M GOING TO TALK ABOUT, OF COURSE, CAN PERTAIN TO ANY OF THE LARGE FOWL VARIETIES OF COCHIN, NOT JUST THE LARGE BUFF COCHINS.

I FEEL THAT THERE IS NOTHING MORE BEAUTIFUL THAN A WELL CONDITIONED AND PREPARED LARGE COCHIN NO MATTER THE VARIETY. THE MASSIVE SIZE, THE PROFUSE FEATHERING, THEIR MANNER AND THE MOST IMPORTANT, THEIR TEMPERMENT. I THINK THAT A LARGE COCHIN'S TEMPERMENT IS AN IMPORTANT FACTOR IN THEIR POPULARITY. MANY PEOPLE LOVE THE LARGE BIRDS OF DIFFERENT BREEDS BUT FIND MANY OF THEM HARD TO MANAGE BECAUSE OF THEIR TEMPERMENT. MOST LARGE COCHINS ARE VERY DOCILE AND QUITE EASILY HANDLED WITH A LITTLE WORK BY ANYONE INCLUDING YOUNGSTERS.

IN BREEDING LARGE BUFF COCHINS IT WILL REQUIRE YOU TO HAVE MORE ROOM THAN IS REQUIRED FOR BANTAMS OR SOME OF THE LIGHTER BREEDS, BUT NO MORE THAN MOST OTHER LARGE BREEDS. ONE DEFINITE ADVANTAGE TO LARGE COCHINS IT THAT YOU DON'T NEED AN 8 FOOT FENCE TO KEEP THEM IN, ONLY TO KEEP PREDATORS-MAINLY DOGS-OUT!!

TO TALK ABOUT BREEDING LARGE BUFF COCHINS WE SHOULD BEGIN WITH THE BREEDING BIRDS THEMSELVES. DEPENDING ON HOW MANY CHICKS YOU PLAN ON RAISING WILL DICTATE HOW MANY BREEDING BIRDS YOU NEED TO KEEP. IF YOU'RE JUST STARTING OUT, I WOULD SUGGEST AT LEAST A TRIO OR BETTER YET, TWO PAIR. THAT WAY, YOU WOULD HAVE AN EXTRA MALE IF SOMETHING WOULD HAPPEN TO ONE OF THEM. ONE THING I WOULD POINT OUT IS THAT ONCE YOU GET STARTED, THE LARGER YOU GENE POOL, THE MORE VARIATION OF GENES THAT YOU WILL HAVE WITHIN YOUR STRAIN OF COCHINS. ULTIMATELY GIVING THEM MORE VITALITY, MAKING FOR STRONGER CHICKS AND BETTER ADULT BIRDS. ALSO MORE IMPORTANT, YOU WILL BE ABLE TO BREED BACK AND FORTH WITHIN YOUR STRAIN TO KEEP BRINGING FORTH THOSE TRAITS WHICH YOU ARE SEEKING WITH LESS VARIATION TOWARD UNDESIRABLE TRAITS. FOR MANY YEARS I RAISED 100 YOUNG BUFF COCHINS EACH YEAR, SELECTING THE BEST WITH THE TRAITS I WAS LOOKING FOR DISCARDING THE OTHERS. THIS YEAR I HAVE ABOUT 75 YOUNG THAT ARE ABOUT 6 MONTHS OLD AND STARTING TO LOOK QUITE NICE. BUT BACK TO THE BREEDING BIRDS, TO RAISE THESE 75 CHICKS I HAD 2 PENS OF OLD HENS ABOUT 6 TO EACH PEN AND 1 PEN OF PULLETS ABOUT 6 IN THIS PEN. FOR MALES, I USED 2 COCKERELS AND 4 OLD COCK

BIRDS, EACH WITH DIFFERENT TRAITS I WAS LOOKING FOR. DURING THE BREEDING SEASON I HAD ABOUT 6 FEMALES RUNNING IN EACH 6 BY 10 FOOT PEN WITH THE MALES IN A 2 BY 4 FOOT SHOW COOP AS I ARTIFICIALLY INSEMINATE, THUS THE MALES NEED TO BE KEPT SEPERATE FROM THE FEMALES DURING THE BREEDING SEASON.

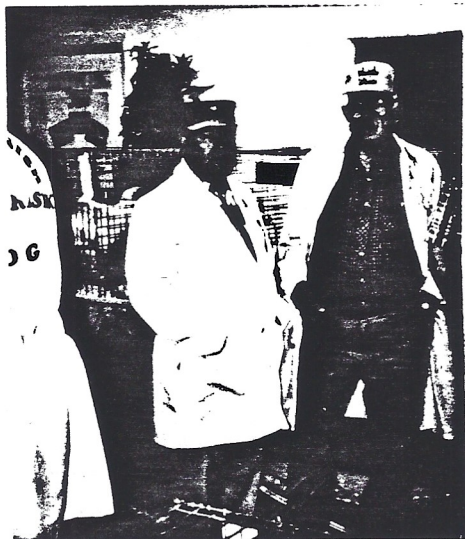
I SUPPOSE NOW WOULD BE AS GOOD A TIME AS ANY TO DISCUSS THE METHOD OF BREEDING WHICH WOULD BE THE BEST FOR YOU. EITHER ARTIFICIALLY INSEMINATE OR NATURAL MATING WILL WORK AND YOU SHOULD DECIDE WHICH IS BEST FOR YOU. NATURAL MATING CAN BE SUCCESSFUL IF SOME PRECAUTIONS ARE TAKEN IN ADVANCE. IF YOU SEPARATE MALES FROM FEMALE DURING THE GROWING STAGE, I WOULD PLACE THE COCKERELS YOU PLAN TO USE WITH SOME FEMALES 2 TO 3 WEEKS IN ADVANCE OF WANTING FERTILE EGGS, TO LET THEM BECOME ACCUSTOMED TO THE FEMALES AND LET THE NATURAL MATING PROCESS TAKE SHAPE. MANY TIMES I'VE SEEN A COCKEREL THAT HAS NOT BEEN WITH FEMALES TAKE A COUPLE OF WEEKS TO GET ON TRACK WITH THE PROCESS. ALSO YOU WILL WANT TO REMOVE THE FEATHERS AROUND THE VENT AREA IN BOTH THE MALES AND FEMALES BY EITHER TRIMMING WITH A SCISSORS OR BY PLUCKING-TAKING CARE NOT TO TEAR THE SKIN, ESPECIALLY ON THE FEMALES. THAT BEAUTIFUL PROFUSE FEATHERING THAT COCHINS ARE KNOWN FOR CAN BE DEADLY ON FERTILITY, ESPECIALLY IF USING AN INEXPERIENCED COCKEREL FOR THE FIRST TIME. NOW FOR ARTIFICIAL INSEMINATION-A CONTROVERSIAL TOPIC WITH SOME PEOPLY. I USE IT WITH GOOD SUCCESS, BUT IT MAY NOT BE FOR EVERYONE AND YOU CAN DECIDE THAT FOR YOURSELF. THERE HAVE BEEN MANY GOOD ARTICLES WRITTEN ON A.I., SO I WON'T GO INTO IT IN GREAT DETAIL HERE. WHEN USING A.I., I DO IT EVERY OTHER DAY-DOING MY LARGE BUFFS ONE DAY AND MY BUFF BANTAMS THE NEXT. I WOULD GUESS I MAYBE SPEND 20-30 MINUTES PER DAY DOING A.I. AND I USUALLY GET ABOUT 95% FERTILITY, WITH ABOUT 2 HATCHES YIELDING THIS YEARS'S 75 LARGE BUFF COCHIN CHICKS. 3



WE SHOULD TALK A MINUTE ABOUT FEED, MANY TIMES I'VE BEEN ASKED, "WHAT SECRET FEED DO YOU USE TO GET SUCH SIZE AND FEATHER QUALITY?" WELL, AS I TELL THOSE WHO SUGGEST THAT THERE IS A SECRET FEED-THERE IS NONE! I FEED COMPLETE COMMERCIAL FEED, BREEDER FOR BREEDING SEASON AND THEN WHAT THEY CALL A BROILER STARTER FOR THE CHICKS FOR THE FIRST FEW WEEKS AND THEN A BROILER FINISHER LATER. BOTH DO HAVE AMPROLINE AT DIFFERENT LEVELS FOR COCCIDIOSIS. I DO FEED QUITE A BIT OF WHOLE OATS, BOTH TO THE BREEDERS AND GROWING YOUNG BIRDS. I THINK IT PROVIDES GOOD FIBER FOR GROWING BIRDS AND IS A GOOD MAINTAINER FOR THE ADULTS. IF YOU CAN GET GOOD HEAVY OATS THEY USUALLY PROVIDE GOOD PROTEIN ALSO. I DO FEED SOME CRACKED CORN IN THE FALL TO THE COCKERELS AS THE WEATHER HERE COOLS, TO PROVIDE ENERGY DURING THEIR FINAL FINISH PERIOD. AND OF COURSE YOU CAN'T BEAT GOOD CLEAN WATER IN LARGE ENOUGH QUANTITIES TO SATISFY AND YET STAY FRESH.

ALL RIGHT, WE'VE PICKED THE BIRDS WE'RE GOING TO BREED FROM. WE'VE DECIDED WHICH WAY WE'RE GOING TO GET FERTILE EGGS, AND WHAT WE'RE GOING TO FEED TO GET THOSE EGGS, BUT WE HAVEN'T TALKED ABOUT LIGHT. YOU CAN HAVE THE RIGHT BIRDS, METHODS, AND FEED BUT RAISING LARGE COCHINS FOR OUR FALL SHOWS MEANS BREEDING THESE BIRDS IN JANUARY AND FEBRUARY TO GET CHICKS EARLY ENOUGH FOR THE FALL SHOWS. WELL, USUALLY YOU NEED SOME ARTIFICIAL LIGHTING TO GET THOSE EGGS, AS THE DAYS ARE NOT LONG ENOUGH TO OFFSET NATURE'S TIME CLOCK THAT ITS COLD AND TOO DARK OUT TO LAY SO REMEMBER TO GIVE THOSE HEN'S ENOUGH LIGHT TO LAY THOSE EGGS.

(PART 2 WILL APPEAR IN OUR NEXT NEWSLETTER.)



IN MEMORIAL OF JOHN EANES.

WE MORN THE PASSING OF A FRIEND, FELLOW EXHIBITOR AND POULTRY JUDGE. JOHN ALWAYS HAD A SMILE AND ENJOYED A GOOD JOKE, EVEN IF IT WAS ON HIM. WHAT A GOOD SPORT HE WAS WHEN HE WAS INITIATED INTO THE "ROYAL SOCIETY OF LAYERS" AND HAD TO MAKE THE "SIGN" OF THE EGG. HE WILL BE GREATLY MISSED!



LOGO SENT TO ME FROM HEINZ JOSEF LORZ...WEST GERMANY. THEY CALL COCHINS "FEATHER BALLS"

## UW study offers new theory on dinosaurs

THE BONES OF HATCHLING DUCK-BILLED DINOSAURS HAD THE SAME GROWTH STRUCTURES AS MODERN BABY CHICKENS, A UNIVERSITY OF WISCONSIN-BASED STUDY PUBLISHED IN THIS WEEK'S SCIENCE MAGAZINE REPORTS.

THE STUDY THAT COMPARED THE BONES OF YOUNG DINOSAURS AND CHICKS SUPPORTS THE EMERGING THEORY THAT BIRDS ARE DIRECT ANCESTORS OF DINOSAURS THAT WERE FAST GROWING AND WARBLOODED.

THE STUDY WAS LED BY CLAUDIA BARRETO AS PART OF HER THESIS FOR A DOCTORAL DEGREE IN BONE CELL BIOLOGY FROM UW'S SCHOOL OF VETERINARY MEDICINE.

BARRETO REACHED HER CONCLUSIONS AFTER STUDYING 72-MILLION-YEAR-OLD FOSSIL BONES OF MAIASAURS FOUND IN A GEOLOGICAL FORMATION OF NORTHWESTERN MONTANA.

MONTANA STATE UNIVERSITY IN BOZEMAN, WHO LENT THE FOSSIL, HAD DISCOVERED THE NESTING AREA OF THE SPECIES. THE CONCENTRATION INCLUDED FOSSILIZED DINOSAUR EGGS AND NEWLY HATCHED DINOSAURS ABOUT 20 INCHES LONG FROM TAIL TO SNOUT.

THESE WOULD GROW INTO FULL SIZED MAIASAURS ABOUT 30 FEET LONG. THE QUESTION WAS, HOW FAST? "IN THE OLD DAYS, PEOPLE USED TO THINK THAT IT TOOK HUNDREDS OF YEARS TO GET THAT BIG," BARRETO SAID. THAT'S BECAUSE EARLY SCIENTISTS ASSUMED THAT DINOSAURS MUST HAVE BEEN COLDBLOODED AND THEREFORE GROWN SLOWLY, BUT CONSTANTLY THROUGHOUT THEIR LIVES.

BUT THIS LIZARD-LIKE IMAGE DIDN'T FIT WHAT BARRETO HAD FOUND - EVIDENCE OF NESTING AND OF PARENTS TENDING THEIR YOUNG AFTER HATCHING. FOR THIS TO MAKE EVOLUTIONARY SENSE, THE YOUNG DINOSAURS SHOULD BE FAST-GROWING, LIKE BIRDS. BARRETO EXAMINED WELL-PRESERVED BONES THAT SHOWED A GROWTH STRUCTURE INDISTINGUISHABLE FROM THE COMPARABLE STRUCTURE IN MODERN CHICKS.

# NATIONALS

HOW DO WE SELECT A SITE FOR A COCHIN NATIONAL? ANY SHOW WISHING TO HOLD OUR NATIONAL SUBMITS A WRITTEN BID TO OUR PRESIDENT AND VICE PRESIDENT. OUR NATIONALS ARE PLACED ON A ROTATION BASIS WITH 7 DISTRICTS - 3 EASTERN- 3 WESTERN - CANADA (BIDDING ON EAST OR WEST USING THE MISSISSIPPI AS AN IMAGINARY LINE EXTENDING INTO CANADA)

SOUND EASY?...NOT SO EASY! HOW ARE THE SELECTIONS MADE? ARE THEY BASED SOLELY ON PRIZE MONEY? WE NEED TO REMEMBER WE ARE BECOMING A LARGE BREED CLUB. WE HAVE ALMOST 200 MEMBERS ALREADY AND WILL GROW EVEN MORE. THIS MEANS WE CAN BRING A SUBSTANTIAL ENTRY OF BIRDS TO ANY SHOW HOSTING OUR NATIONAL. ALSO, OUR COCHIN BREEDERS MAY ENTER OTHER TYPES OF CHICKENS, OR WATERFOWL THAT THEY RAISE. WE ARE A BOOST TO ANY SHOW'S ENTRY AND THAT BOOST SHOULD BE REPRESENTED IN THE PRIZE MONEY AND NICETIES OFFERED.

LET'S COME BACK TO THE PRIZE MONEY. WHAT DO I MEAN BY NICETIES?

1. SINGLE DECKED
2. LARGE FOWL AND BANTAM TOGETHER
3. JUDGED FIRST THING IN THE MORNING
4. OUR CHOICE OF THEIR SLATE OF JUDGES
5. PERHAPS OUR OWN CHAMPION ROW
6. COCHIN CLUB TABLE
7. AREA FOR OUR MEETING
8. ASSURANCE OF ADEQUATE LIGHTING

A MEET CANNOT BE PLACED IF SOME OF IF NOT ALL OF THESE NICETIES ARE NOT OFFERED. WHAT WE NEED TO AVIOD IS THE LOYAL COCHIN INTERNATIONAL MEMBER MAKING A 10 TO 12 HOUR DRIVE TO THE HOST SHOW, SPEND TWO NIGHTS IN A HOTEL ONLY TO FIND HIS BIRDS TRIPLE DECKED IN A DARK CORNER AND THE JUDGING DOESN'T START UNTIL 4:00 IN THE AFTERNOON AND YOU GET THE WATERFOWL JUDGE!

IT IS OUR OFFICERS RESPONSIBILITY TO ASSURE THAT THIS SCENARIO WILL NOT TAKE PLACE. THAT YOU CAN BE CONFIDENT WHEN YOU ATTEND A COCHIN NATIONAL IT WILL BE CONDUCTED IN THE MANNER DESERVING OF OUR BREED.

OK BACK TO MONEY. I HATE TO TALK ABOUT MONEY. BUT LETS BE REALISTIC. WHEN WE RAISE A SHOWS ENTRY WE RAISE A SHOWS PROFIT OR BETTER SAID THEIR AWARD FUNDS. SOME OF THIS NEEDS TO BE PASSED ALONG TO US. ALSO, EACH ONE OF US NEEDS TO SUPPORT ANY SHOW WE REGULARLY ATTEND. THAT SUPPORT SHOULD BE IN AWARD DOATIONS. JUST YOUR" EXHIBITING AT THAT SHOW IS NOT SUPPORT ENOUGH!



HOPEFULLY NOW YOU CAN REALIZE IT IS A REAL RESPONSIBILITY IN DECIDING ON THE SITE FOR OUR NATIONAL. BE SURE TO ENCOURAGE AND ADVISE ANY SHOW THAT YOU ATTEND THAT COULD DRAW 100 OR MORE COCHINS TO BID ON OUR NATIONAL. THEN DON'T FORGET TO ADD YOUR FINANCIAL SUPPORT.

PAT LACEY



## Build Membership Say "Yes"

MEMBERSHIPS RUN FROM JANUARY TO JANUARY AND ARE AVAILABLE FROM DENNIS WOLLARD 1913 BEAU BASSIN ROAD, CARENCRO, LA 70520-9539 318-896-5442

\$15.00/FAMILY, \$10.00/SINGLE, \$7.50/JUNIORS UNDER 18. PLEASE SEND AMERICAN CURRENCY

NAME \_\_\_\_\_

ADDRESS \_\_\_\_\_

CITY \_\_\_\_\_ STATE \_\_\_\_\_ ZIP \_\_\_\_\_

PHONE \_\_\_\_\_ TYPE OF COCHINS RAISED \_\_\_\_\_

THIS ENTITLES YOU TO PARTICIPATION IN ALL CI MEETS, MASTER BREEDER POINTS, AND A NEWSLETTER 3 TIMES A YEAR.

# NATIONAL

1993 COCHIN EASTERN NATIONAL  
ILLINI SHOW BELVIDERE IL. 9/18-19/93

THE EASTERN COCHIN NATIONAL SHOW HAD 500  
COCHINS EXHIBITED.

403..BANTAMS OPEN SHOW

49..LARGE FOWL OPEN SHOW

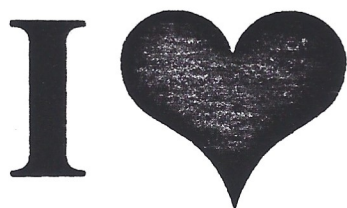
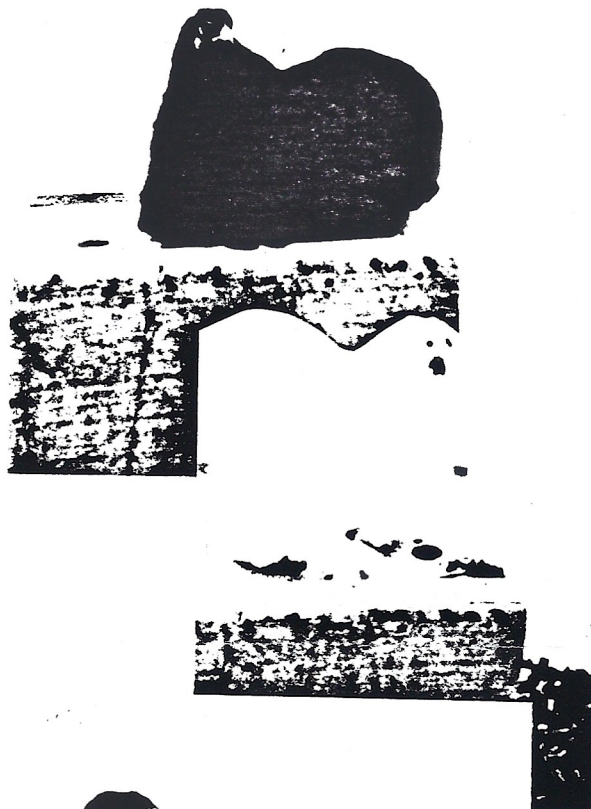
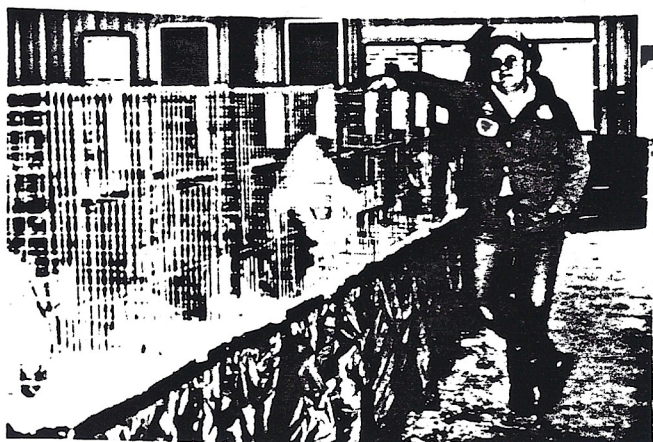
45..BANTAMS JUNIOR SHOW

5..LARGE FOWL JUNIOR SHOW

CHAMPION COCHIN WAS A BLACK EXHIBITED BY  
CRAIG CARROLL AND RESERVED BANTAM COCHIN WAS  
A WHITE EXHIBITED BY KEITH LEGRAND. OUR  
JUDGE WAS RICK PORR.

NORTHEAST DISTRICT 1993 GARDEN STATE SHOW

CHAMPION BANTAM BLACK HEN MARTHA GRINDER  
RESERVE BANTAM WHITE PULLET PETER LUCA  
CHAMPION LARGE MOTTLED HEN ELTON MINNICH



Zwerg-Cochin



## EGG WHITES BUILD THE CHICK

THE WHITE OF THE EGG WHICH MAKES UP ALL THE TISSUES OF THE CHICK MUST CONTAIN ALL THE MATERIALS NEEDED TO MAKE THE FRAMEWORK, THE BODY ORGANS, THE FLESH AND THE DOWN THAT COVERS THE OUTSIDE.

THAT IS WHY IT IS ESSENTIAL THAT HATCHING EGGS COME FROM WELL FED FLOCKS THAT CAN PUT INTO THEIR EGGS ALL THE MATERIALS NEEDED TO MAKE GOOD CHICKS.

THE YOLK, ON THE OTHER HAND, IS MERELY A CONDENSED FOOD SUPPLY. MOST OF IT REMAINS IN THE DIGESTIVE SYSTEM OF THE CHICK WHEN IT IS HATCHED. THIS IS WHY CHICKS REQUIRE LITTLE OR NO FEED DURING THE FIRST 72 HOURS. THEY GRADUALLY DIGEST THIS YOLK, AND WHEN IT IS GONE CHICKS BECOME HUNGRY.

ORDINARILY CHICKS WILL NOT EAT MUCH UNTIL THE YOLK HAS DISAPPEARED. OVERHEATING THE EGGS SOMETIMES HARDENS THIS YOLK SO THAT IT IS NOT READILY DIGESTIBLE. WHEN THIS HAPPENS THE DEATH LOSS RUNS HIGH.

CONSEQUENTLY, BOTH GOOD EGGS FROM WELL FED FLOCKS AND PROPER HATCHING ARE ESSENTIAL IF GOOD HEALTHY CHICKS ARE TO BE PRODUCED!



THIS IS MY BARN IN THE WINTER (WHICH WE HAVE ALOT OF IN WISCONSIN) SEND ME A PICTURE OF YOUR BARN AND WE'LL PUT IT IN THE NEWS-LETTER.

# "COCHIN POACHIN"

MANY OF YOU MAY HAVE READ MY LETTER TO THE EDITOR IS THE "POULTRY PRESS" DISCUSSING THE WORST DISEASE IN POULTRY THE POULTRY THIEF! OTHER LETTERS FROM PEOPLE LOSING BIRDS AT SHOWS FOLLOWED. WE AS EXHIBITORS MUST HELP ONE ANOTHER TO PREVENT THIEVERY IN THE AISLES. GET TO KNOW ONE ANOTHER. GREAT FRIENDSHIPS WILL DEVELOPE. IF PARTNERS EXHIBIT HUSBAND/WIFE OR 2 FRIENDS, HAVE ONE STAY WITH THE BIRDS DURING AWARD PRESENTATIONS AND RAFFLES. THIS IS WHEN MOST THEFTS OCCUR. WHEN WE KNOW WHERE THE BIRDS HAVE GONE TELL THE SHOW MANAGERMENTS! OUR SHOW "WISCONSIN INTERNATIONAL" IS CONSIDERING A CLAUSE IN OUR SHOW CATALOG GIVING THE MANAGEMENT THE RIGHT TO CHECK VEHICLES AND BIRDS THERE IN AT COOP OUT AGAINST ENTRY FORMS. (PURCHASED BIRDS ARE EASILY ACCOUNTED FOR) ABOVE ALL REFUSE TO SELL TO THIS INDIVIDUAL. WE DON'T NEED THESE PEOPLE IN POULTRY! ESPECIALLY IN COCHINS!

PAT LACEY

### ELECTION RESULTS

PRESIDENT...CRAIG CARROLL  
VICE PRESIDENT...ELTOM MINNICH  
TREAS/MEMBERSHIP...DENNIS WOLLARD  
NORTHEAST DIST...DICK & THOLA WALDAU  
SOUTHEAST DIST...LUTHER VINES  
NORTHCENTRAL...BILL BRUNSCHON  
SOUTHWEST...DENNIS WOLLARD  
WESTCENTRAL...SCOTT ADAMS  
PACIFIC...DON & SUE RUTHERFORD  
INTER...BERNICE MACLARON (ONTARIO)

### COMMITTEES

NEWSLETTER..PAT LACEY  
SHOW RESULTS/MASTER BREEDER...BARB LEGRAND  
DIRECTORY...JEFF RYAN  
THANKS TO ALL OF YOU WHO SHOWED SUPPORT OF OUR OFFICERS BY RETURNING YOUR BALLOT EVEN THOUGH MOST OF THE RACES WERE UNCONTESTED.

# Update

### CONCERNING SHOW REPORTS:

PLEASE BE ADVISED THAT BARB LEGRAND AND MYSELF TRY TO OUR BEST ABILITY READ THE HAND WRITTEN SHOW REPORTS SENT TO US. WE ARE SORRY IF YOUR NAME IS SPELLED WRONG. EACH SHOW IS SUPPOSE TO INCLUDE AN EXHIBITORS LIST. MANY DO NOT.

IF YOU FEEL AN ERROR HAS BEEN MADE IN YOUR POINTS OR YOUR REPORT DOES NOT APPEAR ANY CORRECTIONS WILL HAVE TO BE MADE THROUGH THE SHOW YOU ATTENDED. THE SECRETARY OF THAT SHOW WILL HAVE TO CORRECT BY LETTER ANY ADDITONS OR CORRECTIONS NEEDED. THANKS!

# MASTER BREEDER

MASTER BREEDER POINTS 1993  
 (MANY LARGE FALL SHOW REPORTS  
 WERE NOT RECEIVED AT THIS TIME)  
 \*NOTE \*STAR REFLECTS BIRDS SHOWN  
 BUT..NOT ENOUGH FOR POINTS.  
 MUST BE \$ FOR POINTS.

|                   |             |    |
|-------------------|-------------|----|
| SCOTT ADAMS       | BTM BARRED  | 0  |
|                   | BLACK       | 17 |
|                   | BUFF        | 6  |
|                   | WHITE       | 4  |
| BOB ANDERSON      | LG BLACK    | 2  |
|                   | BUFF        | 13 |
| KATEE ANDREWS     | LG PART.    | 2  |
| A M ARMSTRONG     | BTM WHITE   | 4  |
|                   | LG BUFF     | 22 |
| B & B BANTIE BARN | BTM BARRED  | 0* |
|                   | BLACK       | 4  |
| TIM BALLOR        | BTM BLUE    | 2  |
|                   | BUFF        | 2  |
| W & N BARNHOUSE   | BTM BLACK   | 42 |
| BECKERS           | BTM BLACK   | 19 |
|                   | WHITE       | 8  |
| E & M BEST        | BTM WHITE   | 19 |
| JAN BOLTON        | BTM WHITE   | 25 |
| TOM BUSS          | LG WHITE    | 3  |
| CAMPBELL'S PARAD. | BTM FRIZZLE | 11 |
|                   | MOTTLED     | 2  |
| CRAIG CARROLL     | BTM BLACK   | 50 |
|                   | BR. RED     | 8  |
| FRED CIAMPA       | BTM BUFF    | 2  |
| CINDY COLE        | BTM BLACK   | 2  |
| JAMES COLLINS     | BTM WHITE   | 22 |
| M. COMILLIRE      | BTM WHITE   | 21 |
| JIMMIE CURRENS    | BTM BLACK   | 28 |
|                   | WHITE       | 72 |
| DALE DIONNE       | BTM MOTTLED | 1  |
| MIKE DONAHUE      | BTM BIRCHEN | 0* |
| KELLY DOTSON      | BTM WHITE   | 5  |
| BRANDY GATES      | BTM WHITE   | 0* |
|                   | LG BLACK    | 0* |
| MARTHA GRINER     | BTM BLACK   | 50 |
| WILLIS HADLEY     | BTM BLUE    | 2  |
|                   | BLUE S.     | 0* |
| ROBERT HARRIS     | BTM BIRCHEN | 0* |
|                   | LG BLUE     | 0* |
| ROBERT HAWES      | BTM BLUE    | 4  |
|                   | BUFF        | 7  |
| JOHN HENDERSON    | BTM BLACK   | 6  |
| L & C HERTLING    | BTM BLACK   | 3  |
|                   | WHITE       | 3  |
| RAY HICKEY        | BTM BLACK   | 14 |
|                   | WHITE       | 83 |
|                   | LG BLACK    | 6  |
|                   | WHITE       | 2  |
| TIM HOOKER        | BTM BLACK   | 16 |
|                   | WHITE       | 0* |
| T & S ISLER       | BTM BLUE    | 17 |

|                    |             |     |
|--------------------|-------------|-----|
| JASON JARDOT       | BTM BLUE    | 2   |
|                    | PARTR.      | 0*  |
|                    | SPLASH      | 0*  |
| BRIAN JUSTICE      | LG BUFF     | 2   |
| K & C KANTLEHNER   | BTM FR. BLK | 0*  |
|                    | LG BLACK    | 0*  |
| DAVE LAATSCH       | BTM BUFF    | 1   |
|                    | BR. RED     | 0*  |
| PAT LACEY          | BTM BLACK   | 7   |
|                    | WHITE       | 22  |
| MARION LARSON      | BTM MOTTLED | 1   |
|                    | PARTR.      | 0*  |
| BOB LEE            | BTM BUFF    | 1   |
| MATT LHAMON        | BTM BLUE    | 0*  |
| PETER LUCA         | BTM WHITE   | 15  |
| MAC HARP           | BTM BLACK   | 3   |
|                    | LG BLACK    | 15  |
|                    | BUFF        | 52  |
|                    | PARTR.      | 15  |
|                    | WHITE       | 12  |
| CLAUDE MC ALLISTER | BTM BARRED  | 0*  |
|                    | WHITE       | 2   |
| T & W MILLER       | BTM BLACK   | 14  |
| MINNICH COOP       | LG BLACK    | 0*  |
|                    | MOTTLED     | 3   |
| TOMMY MOYER        | BTM BLUE    | 0*  |
| L & M PETERSON     | BTM BLACK   | 39  |
|                    | BUFF        | 4   |
|                    | LG BUFF     | 2   |
| NORMAN RAU         | BTM BLACK   | 32  |
|                    | BLUE        | 2   |
|                    | WHITE       | 24  |
| OTES RAY           | BTM BLACK   | 32  |
|                    | WHITE       | 8   |
| D & S RUTHERFORD   | BTM BLACK   | 4   |
|                    | WHITE       | 17  |
|                    | LG BLACK    | 8   |
|                    | BLUE        | 2   |
| JEFF RYAN          | BTM BLACK   | 3   |
| SAXTON SKIDMORE    | BTM BLUE    | 0*  |
|                    | FRIZZLE     | 0*  |
|                    | MOTTLED     | 0*  |
| L SCHMIDGALL       | BTM FRIZZLE | 4   |
| GEORGE SCHROEDER   | BTM BLACK   | 10  |
| SCOTT'S            | BTM BLACK   | 0*  |
| O SHEWFELT         | BTM BLACK   | 24  |
|                    | BUFF        | 2   |
| RICHARD SISSON     | BTM WHITE   | 3   |
| VERN SORENSEN      | BTM BUFF    | 0*  |
| ST. AMOURS         | LG BLACK    | 0*  |
| PAUL STOCKMAN      | LG BLUE     | 0*  |
| MEGAN STURLEY      | BTM MOTTLED | 0*  |
| ED THOMPSON        | BTM BUFF    | 3   |
|                    | WHITE       | 11  |
| DODDIE TRUEDSON    | BTM BLACK   | 2   |
|                    | WHITE       | 3   |
| LUTHER VINES       | BTM BLACK   | 103 |
|                    | BUFF        | 3   |
|                    | S LACE      | 4   |
|                    | WHITE       | 30  |



# BREEDERS

# DIRECTORY

|                |            |    |
|----------------|------------|----|
| MARCELL WAGNOR | BTM BLACK  | 23 |
|                | WHITE      | 19 |
| D & T WALDAU   | BTM BARRED | 1  |
|                | BLACK      | 2  |
|                | BLUE       | 0* |
|                | MOTTLED    | 0* |
|                | WHITE      | 19 |
| AARON WALSH    | BTM BUFF   | 0* |
| GORDON WALTER  | BTM BLACK  | 1  |
|                | LG BLACK   | 2  |
|                | WHITE      | 0* |
|                | BLUE       | 2  |
| RAY WATFORD    | LG BLACK   | 8  |
| WILLIAM WEST   | LG BLACK   | 3  |
|                | BUFF       | 3  |
| E WIGHTMAN     | BTM BLACK  | 2  |
|                | BLUE       | 0* |
|                | BUFF       | 1  |
|                | SPLASH     | 0* |
| DENNIS WOLLARD | BTM BUFF   | 2  |
|                | LG BUFF    | 1  |
|                | G LACE     | 0* |
| YOBSTS         | BTM WHITE  | 3  |
| BILL ZIEHM     | BTM BLACK  | 10 |
|                | BR RED     | 1  |
| ZIMDARS        | BTM BLACK  | 0* |
|                | WHITE      | 5  |

## COCHINS INTERNATIONAL DIRECTORY

THIS FALL WORK WILL BEGIN TO CREATE OUR FIRST DIRECTORY. JEFF RYAN OF GRAY, ME HAS GRACIOUSLY OFFERED TO PRODUCE THIS BOOKLET. WE PLAN TO USE THE "SHOW CATALOG" TYPE FORMAT. ADS WILL BE AVAILABLE FOR 1/4 PAGE \$10.00, 1/2 PAGE \$20.00, AND FULL PAGE \$40.00.

WE WANT ALL OF OUR INFORMATION ABOUT YOU AND THE TYPE OF "COCHINS" THAT YOU RAISE TO BE ACCURATE.....PLEASE TAKE THE TIME TO COMPLETE THE FORM BELOW AND RETURN TO JEFF.

IF YOU ARE PLACING AN AD, INCLUDE A CHECK PAYABLE TO "COCHINS INTERNATIONAL" AND INCLUDE WHAT YOU WISH TO HAVE IN YOUR AD.

UPON COMPLETION, THIS DIRECTORY WILL BE MAILED TO EACH MEMBER FREE OF CHARGE. IT WILL BE A GREAT SOURCE OF INFORMATION ON OUR MEMBERS AND THE BIRDS THAT THEY RAISE.

JEFF RYAN 19 HYDE ROAD GRAY, ME 04039

## Look At What We Have to Offer

### LOGO PATCHES!!!!!!!!!!

OUR EMBROIDERED LOGO PATCHES HAVE BEEN COMPLETED AND ARE READY FOR PURCHASE. THE PATCH DESIGN IS THE COCHIN INTERNATIONAL LOGO AND FEATURES A WHITE COCHIN. WE HAVE ORDERED 200 PATCHES AND WHEN THESE ARE GONE OUR NEXT ORDER WILL FEATURE A DIFFERENT VARIETY OF COCHIN. YOU WILL WANT TO HAVE ONE OF EACH. THIS IS A FUND RAISING PROJECT FOR OUR CLUB AND SHOULD BRING APPROXIMATELY \$500.00 TO BE USED FOR CLUB OPERATION AND FUTURE AWARDS.

YOU CAN PURCHASE THESE PATCHES FROM:

PAT LACEY  
E3658 KNUTSON LAKE RE  
OGDENSBURG, WI 54962  
414-244-7590

THEY WILL BE THE SAME PRICE WHETHER BOUGHT AT A SHOW I AM AT OR THROUGH THE MAIL. EACH PATCH IS \$5.00. PLEASE MAKE YOUR CHECK PAYABLE TO "COCHINS INTERNATIONAL".

YOU MAY WANT TO ORDER SOME EXTRA PATCHES AND OFFER THESE AS EXTRA AWARDS AT YOUR LOCAL SHOWS.

NAME \_\_\_\_\_

ADDRESS \_\_\_\_\_

STATE, ZIP \_\_\_\_\_

PHONE \_\_\_\_\_

TYPE OF COCHINS RAISED \_\_\_\_\_

NHPFA DEERFIELD N H  
10/10/93 REGIONAL MEET

36 COCHINS

CH BANTAM...NONE LISTED

RES BANTAM...NONE LISTED

BV B BLACK NORMAN RAU

RV B BLACK NORMAN RAU

BV B WHITE NORMAN RAU

RV B WHITE NORMAN RAU

BV B BLUE NORMAN RAU

RV B BLUE WILLIS HADLEY

BV B BUFF ROBERT HAWES

RV B BUFF ROBERT HAWES

BV MOTTLED DICK SULLIVAN

RV B MOTTLED DICK SULLIVAN

BV B SPLASH WILLIS HADLEY

JUDGE JEFF HALBACH

MIDDLE TENN. POULTRY LEBANON TN  
REGIONAL MEET 4/10/93

124 COCHINS

CH LG...BLUE H STONEY POULTRY F  
RES LG..BLUE H STONEY POULTRY F  
CH BANTAM ...WHITE P JIMMIE CURENS  
RES BANTAM...BLACK H JIMMIE CURENS  
JUNIOR CH..WHITE C JESSIE GLIDDEN  
RES JUNIOR ..BLACK H LUCINDA WATKINS  
OVERALL CHAMPION..WHITE P JIMMIE CURENS  
BV LG BLACK H STONEY POULTRY  
RV LG BLACK H STONEY POULTRY  
BV LG WHITE H STONEY POULTRY  
RV LG WHITE H BEN GIBBONS  
BV LG BLUE H STONEY POULTRY  
RV LG BLUE H STONEY POULTRY  
BV B BLACK H JIMMIE CURENS  
RV B BLACK P JIMMIE CURENS  
BV B WHITE P JIMMIE CURENS  
RV B WHITE K JIMMIE CURENS  
BV B BLUE P ROBIN WILLIAMS  
RV B BLUE H LYNDON LAFEVERS  
BV B MOTTLED P CAMPBELLS PARADISE  
RV B MOTTLED H CAMPBELLS PARAGISE  
BV B PARTRIDGE K LESSLIE DYER  
RV B PARTRIDGE C LESLIE DYER  
BV B GOLD LACE C ROBIN WILLIAMS  
RV B GOLD LACE C J PENDERGRASS  
BV FRIZZLE B WHITE C CAMPBELLS PAR.  
RV FRIZZLE B MOTTLED H CAMPBELLS PAR.  
BV AOV B BLUE MOTTLED H CAMPBELLS  
RV AOV B BLUE MOTTLED C CAMPBELLS  
JUDGE....WIL BURTON

TRI COUNTY POULTRY LYNCHBURG TN  
REGIONAL MEET 9/ 4/93

9 COCHINS

CH BANTAM...BLUE MOTTLED C TERRY CAMPBELL  
RES BANTAM..WHITE FRIZZLE C TERRY CAMPBELL  
JUNIOR CHAMPION B WHITE K KARL PYRDOM  
JUDGE MARTY MCGUIRE

FINGER LAKES FEATHER SYRACUSE NY  
6/6/93

58 COCHINS

CH LG...BLACK H GORDON WALTER  
RES LG.. BLACK C GORDON WALTER  
CH BANTAM..BLACK C GEORGE SCHROEDER  
RES BANTAM..WHITE C B. FOLAND  
OVERALL CHAMPION BLACK BANTAM G.SCHROEDER  
BV LG BLACK H GORDON WALTER  
RV LG BLACK C GORDON WALTER  
BV LG WHITE C GORDON WALTER  
BV B BLACK C G. SCHROEDER  
RV B BLACK K B. FOLAND  
BV B WHITE C B FOLAND  
RV B WHITE P B FOLAND  
BV B BLUE H R. WALDAU  
RV B BLUE H EMMA WIGHTMAN

BV B BUFF C B FOLAND  
RV B BUFF K CHRIS FOLAND  
BV B BARRED C SAMMUAL KUCHAREK  
RV B BARRED H SAMMUAL KUCHAREK  
BV B MOTTLED H R WALDAU  
BV B SPLASH C EMMA WIGHTMAN  
JUDGE ERNIE DURB, JERRY YEAW

SOUTH LOUISIANA POULTRY BATON ROUGE LA.  
REGIONAL MEET 11/20/93

62 COCHINS

CH LG...BLACK H WILLARD JOACHIMI  
RES LG..BLACK P DEBBIE ZLEBIS  
CH BANTAM ...WHITE H CLAUDE MARTIN  
RES BANTAM...BLACK P TOM MILLER  
JUNIOR CH ..BLACK P JOEY MELANCON  
RES JUNIOR..BLACK H JOEY MELANCON  
OVERAL CH...WHITE B H CLAUDE MARTIN  
BV LG BLACK H WILLARD JOACHIMI  
RV LG BLACK P DEBBIE ZLEBIS  
BV LG BUFF P WILLARD JOACHIMI  
RV LG BUFF K DENNIS WOLLARD  
BV B BLACK P TOM MILLER  
RV B BLACK C TOM MILLER  
BV B WHITE H CLAUDE MARTIN  
RV B WHITE K LUTHER VINES  
BV B BUFF C DENNIS WOLLARD  
RV B BUFF K ROY SCHELL  
BV B SILVER LACE P LUTHER VINES  
RV B SILVER LACE K LUTHER VINES  
BV B GOLD LACE H DENNIS WOLLARD  
RV B GOLD LACE H DENNIS WOLLARD  
JUDGE JOHN WUNDERLICH, PAT MALONE

BARRIE FALL FAIR BARRIE ONTARIO  
8/28/93

73 COCHINS

CH LG...BLACK H MACHARP POULTRY  
RES LG..BUFF H MACHARP POULTRY  
CH BANTAM..WHITE C RAY HICKEY  
RES BANTAM.. BLACK K RAY HICKEY  
OVERALL CH WHITE C RAY HICKEY  
BV LG BLACK H MACHARP POULTRY  
RV LG BLACK C RAY HICKEY  
BV LG WHITE H MACHARP POULTRY  
RV LG WHITE C RAY HICKEY  
BV LG BUFF H MACHARP POULTRY  
RV LG BUFF P MACHARP POULTRY  
BV LG PARTRIDGE K MACHARP POULTRY  
RV LG PARTRIDGE H MACHARP POULTRY  
BV B BLACK K RAY HICKEY  
RV B BLACK H JIM CHYMOUETH  
BV B WHITE RAY HICKEY  
RV B WHITE RAY HICKEY  
BV B BUFF H ED THOMPSON  
RV B BUFF H AMBER CRAWFORD  
JUDGE GORDON RIDLER, RAY BARRY

YORK COUNTY POULTRY YORK PA  
10/30-31/93 REGIONAL MEET

69 COCHINS

CH BANTAM..BLACK H MARTHA GRINER  
RES BANTAM...BLACK C MARTHA GRINER  
JUNIOR CH BAN..BLACK H A. LIVEZEY  
JUNIOR RES BAN..BLACK C SETH HARRIS  
BV B BLACK H MARTHA GRINER  
RV B BLACK C MARTHA GRINER  
BV B WHITE JAY YOBST C  
RV B WHITE RICK HARE P  
BV B BLUE C TOMMY MOYER  
RV B BLUE H TOMMY MOYER  
BV B BUFF H DON WRIGHT  
RV B BUFF P DON WRIGHT  
BV B MOTTLED C D YOBST  
BV B SILVER LACE P DOUGLAS MCCARTY  
RV B SILVER LACE K DOUGLAS MCCARTY  
BV B FRIZZLE L SCHMIDGALL P  
RV B FRIZZLE P LORETTA SCHMIDGALL  
BV B AOV C DANIELLE YOBST  
RV B AOV H TOMMY MEYER  
JUDGE PAUL KROLL

CARPET CITY POULTRY DALTON GA  
10/23-24/93 REGIONAL MEET

37 COCHINS

CH LG... WHITE H JAMES WATKINS  
RES LG...WHITE H JAMES WATKINS  
CH BANTAM..BLACK K LUTHER VINES  
RES BANTAM..WHITE P LUTHER VINES  
JUNIOR CH BAN..BLACK H JESSICA SCOTT  
JUNIOR RES BAN..BLACK K JESSICA SCOTT  
OVERALL CH..BLACK K LUTHER VINES  
BV LG WHITE H JAMES WATKINS  
RV LG WHITE H JAMES WATKINS  
BV B BLACK LUTHER VINES  
RV B BLACK TOMMY MILLER  
BV B WHITE LUTHER VINES  
RV B WHITE RICHARD SISSON!  
BV SILVER LACE K LUTHER VINES  
RV B SILVER LACE P LUTHER VINES  
BV FRIZZLE WHITE C TERRY CAMPBELL  
RV FRIZZLE MOTTLED C TERRY CAMPBELL  
JUDGE HARRY HALBACH

NORTH IOWA POULTRY MASON CITY IA  
9/18-19/93 REGIONAL MEET

100 COCHINS

CH LG...BUFF P PETERSONS  
RES LG..WHITE P J FREDERICK  
CH BANTAM...BLACK K PETERSONS  
RES BANTAM..BLACK P PETERSONS  
JUNIOR CH BAN WHITE P MATT HERTLING

JUNIOR RES BLACK P RYAN HERTLING  
OVERALL CH BLACK K L. & M. PETERSON  
BV LG BLACK JEFF FREDERICK  
RV LG BLACK JEFF FREDERICK  
BV LG WHITE JEFF FREDERICK  
RV LG WHITE JEFF FREDERICK  
BV LG BUFF L & M PETERSON  
RV LG BUFF L & M PETERSON  
BV B BLACK L & M PETERSON  
RV B BLACK L & M PETERSON  
BV B WHITE RICO SEBASINIELLI  
RV B WHITE RICO SEBASINIELLI  
BV B BUFF L & M PETERSON  
RV B BUFF L & M PETERSON  
BV B MOTTLED DUANE MILLER  
RV B MOTTLED MARION LARSON  
BV B PARTRIDGE MARION LARSON  
JUDGE JIM SULLEE

GARDEN STATE FLEMINGTON N J  
11/13-14/93 DISTRICT MEET

63 COCHINS

CH LG...MOTTLED H MINNICH COOP  
RES LG..WHITE P THOMAS BUSS  
CH BANTAM..BLACK H MARTHA GRINER  
RES BANTAM..WHITE P PETER LUCA  
OVERALL CH BLACK H MARTHA GRINER  
BV LG BLACK C MINNICH COOP  
RV LG BLACK P ST AMOUR  
BV LG WHITE P THOMAS BUSS  
BV L G BLUE P MARIA BELTRAN  
BV LG H MINNICH COOP  
BV LG PARTRIDGE H PAUL PINKERTON  
RV LG PARTRIDGE K PAUL PINKERTON  
BV B BLACK H MARTHA GRINER  
RV B BLACK P MARTHA GRINER  
BV B WHITE PETER LUCA P  
RV B WHITE H PETER LUCA  
BV B BLUE P TOMMY MOYER  
RV B BLUE H TOMMY MOYER  
BV B BUFF P BRUCE LAVIOLETTE  
RV B BUFF K BRUCE LAVIOLETTE  
JUDGE CHARLES WABEK

BRACEBRIDGE FALL FAIR  
BRACEBRIDGE ONTARIO 9/19/93 REGIONAL MEET

105 COCHINS

CH LG...BUFF H MACHARP POULTRY  
RES LG...WHITE K MACHARP POULTRY  
CH BANTAM.. WHITE H RAY HICKEY  
RES BANTAM..WHITE C RAY HICKEY  
JUNIOR CH LG BLACK C JEREMY CYNOWETH  
JUNIOR RES LG BLACK H JEREMY CYNOWETH  
OVERALL CH WHITE H RAY HICKEY  
BV LG BLACK MACHARP POULTRY H

RV LG BLACK K RAY HICKEY  
BV LG WHITE K MACHARP POULTRY  
RV LG WHITE H MACHARP POULTRY  
BV LG BUFF H MACHARP POULTRY  
RV LG BUFF P MACHARP POULTRY  
BV LG PARTRIDGE H MACHARP POULTRY  
RV LG PARTRIDGE K MACHARP POULTRY  
BV B BLACK P JIM CYNOWETH  
RV B BLACK K MACHARP POULTRY  
BV B WHITE H RAY HICKEY  
RV B WHITE C RAY HICKEY  
BV B BLUE C K & M ROSS  
RV B BLUE H K & M ROSS  
BV B BUFF H W L BROWN  
RV B BUFF K M ROSS  
BV B RED H BILL HOLLINGS  
JUDGE BILL SHEAN LARRY BYRES

HUNTSVILLE FALL FAIR HUNTSVILLE ONTARIO  
9/29/93 REGIONAL MEET

86 COCHINS

CH LG..BUFF H MACHARP POULTRY  
RES LG..BUFF P MACHARP POULTRY  
CH BANTAM..WHITE C RAY HICKEY  
RES BANTAM..BLACK C RAY HICKEY  
JUNIOR CH BAN JEREMY CYNOWETH"BLACK K  
JUNIOR RES BAN BLACK P JEREMY CYNOWETH  
OVERALLCH WHITE C RAY HICKEY  
BV LG BLACK P BILL HOLLINGS  
RV LG BLACK K RAY HICKEY  
BV LG WHITE C RAY HICKEY  
RV LG WHITE H MACHARP POULTRY  
BV LG BUFF H MACHARP POULTRY  
RV LG BUFF P MACHARP POULTRY  
BV LG PARTRIDGE H DIANE GERROW  
RV LG PARTRIDGE H MACHARP POULTRY  
BV B BLACK C RAY HICKEY  
RV B BLACK K JEREMY CYNOWETH  
BV WHITE C RAY HICKEY  
RV B WHITE K RAY HICKEY  
BV B BLUE KEITH ROSS  
RV B BLUE KEITH ROSS  
BV B BUFF P KEITH ROSS  
RV B BUFF C KEITH ROSS  
BV B PARTRIDGE H LEE BRODIC  
RV B PARTRIDGE H LEE BRODIC  
BV B RED C BILL HILEY  
JUDGEDON MADENA

WASHINGTON FEATHER FANCIERS MONROE WA  
10/16-17/93 REGIONAL MEET

52 COCHINS

CH LG...BLACK P RUTHERFORD  
RES LG..BLACK P RUTHERFORD  
CH BANTAM..BLACK C BARNHOUSE  
RES BANTAM..WHITE C RUTHERFORD

JUNIOR CH LG BLACK H LISA CLARK  
JUNIOR RES LG BLACK C LISA CLARK  
JUNIOR CH BAN BLACK H EVAN NEISER  
JUNIOR RES BAN BLACK H EVAN NEISER  
OVERALL CH BLACK C BARNHOUSE  
BV LG BLACK P RUTHERFORD  
RV LG BLACK P RUTHERFORD  
BV LG PARTRIDGE H ROY BECK  
RV LG PARTRIDGE P ROY BECK  
BV B BLACK C BARNHOUSE  
RV B BLACK K RUTHERFORD  
BV B WHITE C RUTHERFORD  
RV B WHITE K RUTHERFORD  
BV B BLUE H BILL SAXTON  
BV B BUFF C VANVALKENBURG  
RV B BUFF H R VERDUIN  
BV B MOTTLED GEORGE MARSHALL  
RV B MOTTLED K JAMES HALEY  
BV B RED P MINDY CRAMER  
RV RED P CASSIE HANSEN  
JUDGE BILL HOLAND CHARLES OLTERSDORF

MICHIGAN POULTRY BREEDERS CENTREVILLE MI  
5/8-9/93 REGIONAL MEET

143 COCHINS

CH BANTAM..BLACK P CRAIG CARROLL  
RES BANTAM..WHITE K BOLTONS BIRDS  
JUNIOR CH BAN..BLACK C TONYA BOWLES  
JUNIOR RES BAN..BLACK H TONYA BOWLES  
BV B BLACK P CRAIG CARROLL  
RV B BLACK K CRAIG CARROLL  
BV B WHITE K BOLTONS BIRDS  
RV B WHITE H JOHN HOEUSTRA  
BV B BLUE H JASON JARDOT  
RV B BLUE K TIM BALLOR  
BV B BUFF H ED CIAMPA  
RV B BUFF K TIM BALLOR  
BV B BARRED K EVEYLN NUFFER  
RV B BARRED P EVEYLN NUFFER  
BV B BIRCHEN K MIKE DONAHUE  
RV B BIRCHEN P FRANCIS STROUD  
BV B MOTTLED P DALE DIONNE  
BV B BROWN RED K CRAIG CARROLL  
RV B BROWN RED P CRAIG CARROLL  
BV B PARTRIDGE K JASON JARDOT  
BV B SPLASH P JASON JARDOT  
JUDGE RALPH BEAMER

EASTERN NEW YORK POULTRY COBLESKILL NY  
9/26/93 REGIONAL MEET

76 COCHINS

CH LG..BLACK K RUBY BROUILLETTE  
RES LG..WHITE K J SMITH  
CH BANTAM..WHITE C R WALDAU  
RES BANTAM WHITE H B FOLAND

BV LG BLACK K RUDY BROUILLETTE  
RV LG BLACK P RUDY BROUILLETTE  
BV LG WHITE K J SMITH  
RV WHITE RUDY BROUILLETTE  
BV LG BLUE H ROBERT HARRIS  
RV LG BLUE H CAROL PUESCHEL  
BV LG BUFF P CAROL PUESCHEL  
RV L G BUFF WENDY KUEBLER  
BV LG SILVER LACE P CAROL PUESCHEL  
BV LG PARTRIDGE P ROBERT LASHER  
RV LG PARTRIDGE K ROBERT LASHER  
BV B BLACK C R WALDAU  
RV B BLACK H EMMA WIGHTMAN  
BV B WHITE R WALDAU  
RV B WHITE B FOLAND  
BV B BLUE R WALDAU  
RV B BLUE CAROL PUESCHEL  
BV B BUFF B FOLAND  
RV B BUFF EMMA WIGHTMAN  
BV B BARRED R WALDAU  
RV B BARRED CAROL PUESCHEL  
BV B BIRCHEN P ROBERT HARRIS  
RV B BIRCHEN H ROBERT HARRIS  
BV B MOTTLED H CAROL PUESCHEL  
RV B MOTTLED C CAROL PUESCHEL  
BV B PARTRIDGE P CAROL PUESCHEL  
RV B PARTRIDGE K CAROL PUESCHEL  
BV B GOLD LACED H CAROL PUESCHEL  
RV B GOLD LACED C CAROL PUESCHEL  
JUDGE RALPH MOREY

TWIN TIER POULTRY BATH N Y  
9/12/93 REGIONAL MEET

CH LG..BLUE K GORDON WALTER  
RES LG..BLACK C GORDON WALTER  
CH BANTAM..BLACK C B FOLAND  
RES BANTAM..LAWRENCE BAKER  
OVERALL CH BLACK B COCK B FOLAND  
38 COCHINS  
BV LG BLACK C GORDON WALTER  
RV LG BLACK H GORDON WALTER  
BV LG WHITE P GORDON WALTER  
RV LG WHITE C GORDON WALTER  
BV LG BLUE K GORDON WALTER  
RV LG BLUE P GORDON WALTER  
BV LG PARTRIDGE F ANDREWS  
BV B BLACK C B FOLAND  
RV B BLACK C L BAKER  
BV B WHITE H B FOLAND  
RV B WHITE C R WALDAU  
BV B BLUE H R WALDAU  
RV B BLUE H R WALDAU  
BV BUFF H WIGHTMAN  
RV B BUFF K WIGHTMAN  
BV B BARRED K B FOLAND  
RV B BARRED P R WALDAU  
JUDGE CURTIS OAKES ERNIE DURB

LAND OF BLACKHAWK JANESVILLE WI  
9/11/93

70 COCHINS  
CH LG...BLACK P BILL HELM  
RES LG..BLACK H L KANTLEHNER  
CH BANTAM..BLACK C TIM HOOKER  
RES BANTAM..BLACK K CRAIG CARROLL  
JUNIOR CH LG.BUFF K BRIAN SCHAAL  
JUNIOR RES LG BLACK K DEBBIE WOOLSDRUM  
JUNIOR CH BAN.BROWN RED P JIM LAATSCH  
JUNIOR RES BAN BUFF P AARON WALSH  
OVERALL CH BLACK C TIM HOOKER  
BV LG BLACK P BILL HELM  
RV LG BLACK H L KANTLEHNER  
BV B BLACK C TIM HOOKER  
RV B BLACK K CRAIG CARROLL  
BV B WHITE K LEON ZIMDARS  
RV B WHITE C TIM HOOKER  
BV B BUFF K DAVID LAATSCH  
BV B FRIZZLE BLACK H L KANTLEHNER  
RV B FRIZZLE BLACK H WHISPERING PINES  
BV B FRIZZLE WHITE C WHISPERING PINES  
JUDGE HARRY & JEFF HALBACH

MIDDLE TENNESSEE POULTRY LEBANON TN  
10/2/93

39 COCHINS  
CH LG..BUFF P ROBIN HALLIDAY  
CH BANTAM..MOTTLED H LYNDON LA FEVERS  
RES BANTAM..WHITE H KELLY DOTSON  
JUNIOR CH BAN..BLACK H L WATKINS  
BV LG BUFF H ROBIN HALLIDAY  
BV B BLACK P LESLIE DYER  
RV B BLACK H SHEILA SMITH  
BV B WHITE H KELLY DOTSON  
RV B WHITE C KELLY DOTSON  
BV B BLUE P LESLIE DYER  
RV B BLUE H DAN WILLIAMS  
BV B BIRCHEN C SHEILA SMITH  
RV B BIRCHEN H SHEILA SMITH  
BV B MOTTLED H LYNDON LAFEVERS  
RV B MOTTLED P TERRY CAMPBELL  
BV B RED H JAMEY PENDERGRASS  
BV B FRIZZLE MOTTLED C DIANE GRESSMAN  
RV B FRIZZLE WHITE C TERRY CAMPBELL  
JUDGE CARL FREEMAN

**ANY WAY  
YOU LOOK  
AT IT.**

**We've Only Just Begun**

STATE FAIR SACRAMENTO CA,  
9/3-6/93 REGIONAL MEET

17 COCHINS

RES BANTAM WHITE P GEORGE BELLEISLE  
BV B BLACK BOB JARVIS  
RV B BLACK BOB JARVIS  
BV B WHITE GEORGE BELLEISLE  
RV B WHITE GEORGE BELLEISLE

CANADIAN INT CLASSIC SIMCOE ONTARIO  
8/20,21/93 REGIONAL MEET

55 COCHINS

CH LG...BLACK H RAY WATFORD  
RES LG...BUFF H MACHARP POULTRY  
CH BANTAM..BLACK P ORVILLE SHEWFELT  
RES BANTAM,,BLACK C ORVILLE SHEWFELT  
JUNIOR CH..PARTRIDGE C MICHAEL GAINMAND  
OVERALL CH B BLACK P ORVILLE SHEWFELT  
BV LG BLACK H RAY WATFORD  
RV LG BLACK K RAY WATFORD  
BV LG WHITE H MACHARP POULTRY  
RV LG WHITE C MACHARP POULTRY  
BV LG BUFF C MACHARP POULTRY  
RV LG BUFF H MACHARP POULTRY  
BV PARTRIDGE MACHARP POULTRY  
RV LG PARTRIDGE MACHARP POULTRY  
BV B BLACK P ORVILLE SHEWFELT  
RV B BLACK K ORVILLE SHEWFELT  
BV B WHITE P MICHAEL BECKER  
RV B WHITE C STAN KIRTING  
BV B BUFF K HOWARD FLETCHER  
RV B BUFF P HOWARD FLETCHER  
JUDGE RALPH BEAMER, RAY BARRY, LARRY BYERS

RICHARD HILL AGRICULTURE ONTARIO  
5/8/93 REGIONAL MEET

82 COCHINS

CH LG..BLACK H MACHARP POULTRY  
RES LG..BUFF C MACHARP POULTRY  
CH BANTAM..WHITE H MARK CAMILLERI  
RES BANTAM.. WHITE C ED THOMPSON  
OVERALL CH MARK CAMILLERI  
BV LG BLACK H MACHARP POULTRY  
RV LG BLACK C MACHARP POULTRY  
BV LG WHITE MARGOT CANELLI H  
BV LG WHITE C MARGOT CANELLI  
BV LG BUFF MACHARP POULTRY  
RV LG BUFF MACHARP POULTRY  
BV LG PARTRIDGE H MACHARP POULTRY  
RB LG PARTRIDGE C JOHN TILT  
BV B BLACK H MICHAEL BECKER  
RV B BLACK C MICHAEL BECKER  
BV B WHITE H MARK CAMILLERI  
RV B WHITE C ED THOMPSON  
BV B BLUE HANS MAAS  
RV B BLUE KIM ROSS

BV B BUFF H ORIVILLE SHWEFELT  
RV B BUFF C ED THOMPSON  
JUDGE JIM MCFAIL, DON SETO

WISCONSIN INTERNATIONAL JANESVILLE WI  
9/25-26/93 REGIONAL MEET

221 COCHINS

CH LG...BLACK P KANTLEHNER  
RES LG..BLACK H DANE AFFLECK  
CH BANTAM..WHITE P PAT LACEY  
RES BANTAM..WHITE K KEITH LEGRAND  
JUNIOR CH LG WHITE P ROBBIE WILTSE  
JUNIOR CH B WHITE C JULIE JONES  
JUNIOR RES B BLACK H DANA KRAUSE  
OVERALL CH WHITE P PAT LACEY  
BV LG BLACK P KANTLEHNER  
RV LG BLACK H DANE AFFLECK  
BV LG PARTRIDGE ERIC WHILHELM  
BV B BLACK K CRAIG CARROLL  
RV B BLACK H CRAIG CARROLL  
BV B WHITE P PAT LACEY  
RV B WHITE K KEITH LEGRAND  
BV B BLUE H BILL KRUEGER  
RV B BLUE P BILL KRUEGER  
BV B BUFF C BURKETT POULTRY  
RV B BUFF DANE LAATSCH  
BV B BIRCHEN C WHISPERING PINES  
RV B BIRCHEN P CASEY HOEFT  
BV B MOTTLED MARION LARSON K  
RV B MOTTLED H MARRION LARSON  
BV B SILVER LACE P JULIE VERNE  
RV B SILVER LACE H WHISPERING PINES  
BV B BROWN RED C CRAIG CARROLL  
RV B BROWN RED K CRAIG CARROLL  
BV B PARTRIDGE P MARIAN LARSON  
RV B PARTRIDGE K DAN SCHWANDT  
BV B GOLD LACE P JULIE VERNE  
BV B SPLASH BILL KRUEGER  
BV B FRIZZLE WHITE H WHISPERING PINES  
RV B FRIZZLE BLACK H KANTLEHNER  
JUDGE J. B. HARRELL JR.

BROWN COUNTY POULTRY NEW ULM MN.  
10/9-10/93 REGIONAL MEET

CH BANTAM...WHITE P PAT LACEY  
RES BANTAM..WHITE K PAT LACEY  
JUNIOR CH ..BLACK K RYAN HERTLING  
JUNIOR RES..WHITE P MATT HERTLING  
60 COCHINS  
BV B BLACK H TIM THOMPSON  
BV B BLACK P ALBERT STURM  
BV B WHITE P PAT LACEY  
RV B WHITE K PAT LACEY  
BV B BUFF K ALBERT STURM  
RV B BUFF C HARRY IMEL  
BV B MOTTLED H DWAYNE MILLER  
RV B MOTTLED K MARION LARSON

BV B SILVER LACE P ALLONE POTTER  
BV B GOLD LACE P ALLONE POTTER  
BV B RED K ALLONE POTTER  
BV B SPLASH P ALLONE POTTER  
JUDGE JOHN THOMFORDE

ALABAMA BANTAM CLUB BIRMINGHAM AL  
9/25/93 REGIONAL MEET

8 COCHINS  
CH BANTAM...WHITE H KELLY DOTSON  
RES BANTAM...WHITE P KELLY DOTSON  
JUDGE MCGUIRE

BOSTON POULTRY EXPO TOPSFIELD MA  
10/23-24/93 REGIONAL MEET

85 COCHINS  
CH LG...BUFF P BILL WEST  
RES LG...BLACK P BILL WEST  
CH BANTAM...WHITE P NORMAN RAU  
RES BANTAM...BLACK K NORMAN RAU  
JUNIOR CH BAN...WHITE C T. MACPHERSON  
RES JUNIOR BAN...BLACK C J. SIDEBOTTOM  
OVERALL CH B WHITE P NORMAN RAU  
BV LG BLACK P WILLIAM WEST  
RV LG BLACK K WILLIAM WEST  
BV LG BUFF P WILLIAM WEST  
RV LG BUFF K WILLIAM WEST  
BV LG PARTRIDGE H S. WOLANSKI  
RV LG PARTRIDGE H S. WOLANSKI  
BV B BLACK K NORMAN RAU  
RV B BLACK P NORMAN RAU  
BV B WHITE P NORMAN RAU  
RV B WHITE H CLAUDE MCALLISTER  
BV B BLUE P BOB HAWES  
RV B BLUE K NORMAN RAU  
BV B BUFF P V TROMBLEY  
RV B BUFF K R HAWES  
BV B BARRED H CLAUDE MCALLISTER  
RV B BARRED C CLAUDE MCALLISTER  
BV B BIRCHEN C S. CARTER  
RV B BIRCHEN H S. CARTER  
BV B MOTTLED K R SULLIVAN  
RV B MOTTLED H R SULLIVAN  
BV B BROWN RED P S CARTER  
RV B BROWN RED H S CARTER  
BV B PARTRIDGE P S CARTER  
BV RED C M. SENECAL  
JUDGE C WABECK M WASYLKOWSKI

PACIFIC NORTHWEST POULTRY HILLSBORO OR  
11/13-14/93 REGIONAL MEET

30 COCHINS  
CH LG..BUFF P BOB ANDERSON  
RES LG..BUFF C BOB ANDERSON  
CH BANTAM.. WHITE H DODDIE TRUEDSON  
RES BANTAM..BLACK H DODDIE TRUEDSON  
JUNIOR CH LG BUFF P LACEE ERICSON  
RES JUNIOR LG BLACK P SARAH ERICSON  
JUNIOR CH BAN WHITE C MICKEY O BRIEN  
JUNIOR RES BAN WHITE C LACEE ERICKSON  
OVERALL CH BUFF P BOB ANDERSON  
BV LG BLACK P BOB ANDERSON  
RV LG BLACK P BOB ANDERSON  
BV LG BLUE P KRISTI NORRIS  
RV LG BLUE P SUSAN CARLSON  
BV LG BUFF P BOB ANDERSON  
RV LG BUFF BOB ANDERSON  
BV LG PARTRIDGE P SUSAN CARLSON  
BV B BLACK H DODDIE TRUEDSON  
BV B WHITE H DODDIE TRUEDSON  
RV B WHITE C DODDIE TRUEDSON  
BV B BUFF H L. VANVALKENBURG  
JUDGE \_

SOUTHERN OHIO POULTRY LUCASVILLE, OH  
10/2-3/93 REGIONAL MEET

13 COCHINS  
CH LG...BUFF P BRIAN JUSTICE  
RES LG...BUFF K BRIAN JUSTICE  
CH BANTAM...WHITE H THE HILLS  
RES BANTAM...WHITE P THE HILLS  
BV LG BUFF P BRAIN JUSTICE  
RV LG BUFF K BUIAN JUSTICE  
BV B BLACK C HEATHER BRANDON  
RV B BLACK H HEATHER BRANDON  
BV B WHITE H THE HILLS  
RV B WHITE P THE HILLS  
BV PARTRIDGE H CHARLES GREEN  
RV PARTRIDGE C CHARLES GREEN  
JUDGE ROBERT FLEMING

NEW ENGLAND POULTRY NORTHAMPTON MASS.  
10/3/93 REGIONAL MEET

21 COCHINS  
CH LG...BLACK P WILLIAM WEST  
RES LG..BLACK K WILLIAM WEST  
CH BANTAM..WHITE H EVERETTE FOLAND  
RES BANTAM..BUFF P VALERIE TROMBLEY  
BV LG BLACK WILLIAM WEST  
RV LG BLACK WILLIAM WEST  
BV B BLACK C FOLAND  
RV B BLACK C FOLAND  
BV B BUFF VALERIE TROMBLEY  
BV B BARRED C FOLAND  
JUDGE ERNIE DURB JERRY YEAW

**YOU CAN DO IT!**

# FINANCIAL REPORT

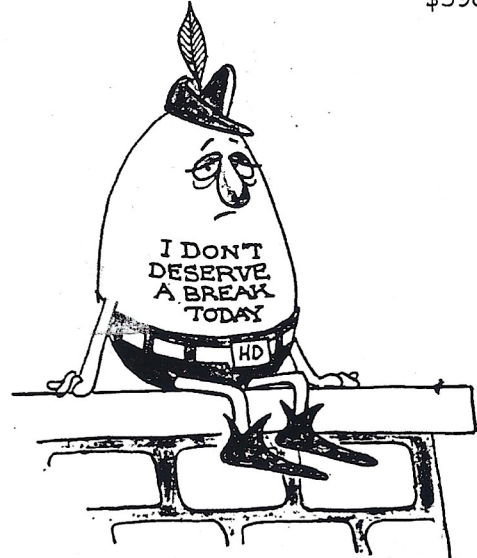
## FINANCIAL REPORT ELTON MINNICH

|   |          |
|---|----------|
| 8/15/93 BALANCE   | \$577.64 |
| 8/24/93 CK#116 CAMELOT SPEC.<br>DISTRICT AWARD ADJUSTMENT | 30.50    |
| 8/28/93 CK#117 POST MASTER 2<br>ROLLS OF STAMPS           | 58.00    |
| 8/30/93 CK118 PAT LACEY ADD.<br>CHARGE NEWSLETTER         | 42.51    |
| 9/1/93 CK#119 CAMELOT SPEC<br>AWARDS EASTERN NATIONAL     | 192 50   |
| 9/2/93 CK#120 POSTAL ANNEX<br>COPIES AND 8 40¢ STAMPS     | 40.01    |
| 9/14/93 DEPOSIT DUES                                      | 142.00   |
| 9/24/93 CK#121 POSTMASTER<br>POSTAGE DISTRICT AWARDS      | 7.05     |
| 9/27/93 CK#122 CAMELOT SPEC<br>AWARDS CANADA DISTRICT     | 156.00   |
| SERVICE CHARGE  | 3.00     |
| 10/15/93 CK#123 POULTRY PRESS<br>COCHINS INTERN AD        | 40.00    |
| 11/4/93 DUES & RENEWALS                                   | 180.00   |
| 11/24/93 DUES & RENEWALS                                  | 126.00   |
| 11/24/93 CK#124 CAMELOT SPEC<br>AWARDS NORTHEAST DISTRICT | 156.00   |
| 11/30/93 CK# 125 DENNIS WOLLARD<br>CLOSE OUR ACCOUNT      | 300.07   |

ELTON MINNICH PAST TREASURER

## FINANCIAL REPORT DENNIS WOLLARD

|   |                |
|---|----------------|
| 10/8/93 DUES AND PATCHES                        | 332.50         |
| 10/8/93 POSTAGE PATCHES                         | 7.19           |
| 10/8/93 MEMBERSHIP                              | 10.00          |
| 10/25/93 CK#100 PAT LACEY<br>COPIES AND POSTAGE | 16.63          |
| 10/25/93 CK#101 PAT LACEY<br>NEWSLETTER ADVANCE | 130.00         |
| 10/26/93 DUES DEPOSIT                           | 40.00          |
| 11/8/93 DUES DEPOSIT                            | 30.00          |
| 11/8/93 PATCHES DEPOSIT                         | \$298.68       |
| DEPOSIT CHECK FROM ELTON                        | 300.07         |
|   | <hr/> \$598.75 |



16

FROM THE COOP OF  
PAT LACEY  
E 3658 Knutson Lake Rd.  
Ogdensburg, WI 54962



From  
Wisconsin  
with  
LOVE!

POSTED AND MF 041 20:59 01/22/94 DDP #3

dues exp 12/93  
Robert Hawes  
8 Short Wharf Rd  
Hampton, ME 04444